

CERTIFICATE OF LOCATION OF GOVERNMENT CORNER

NASHVILLE TWP.

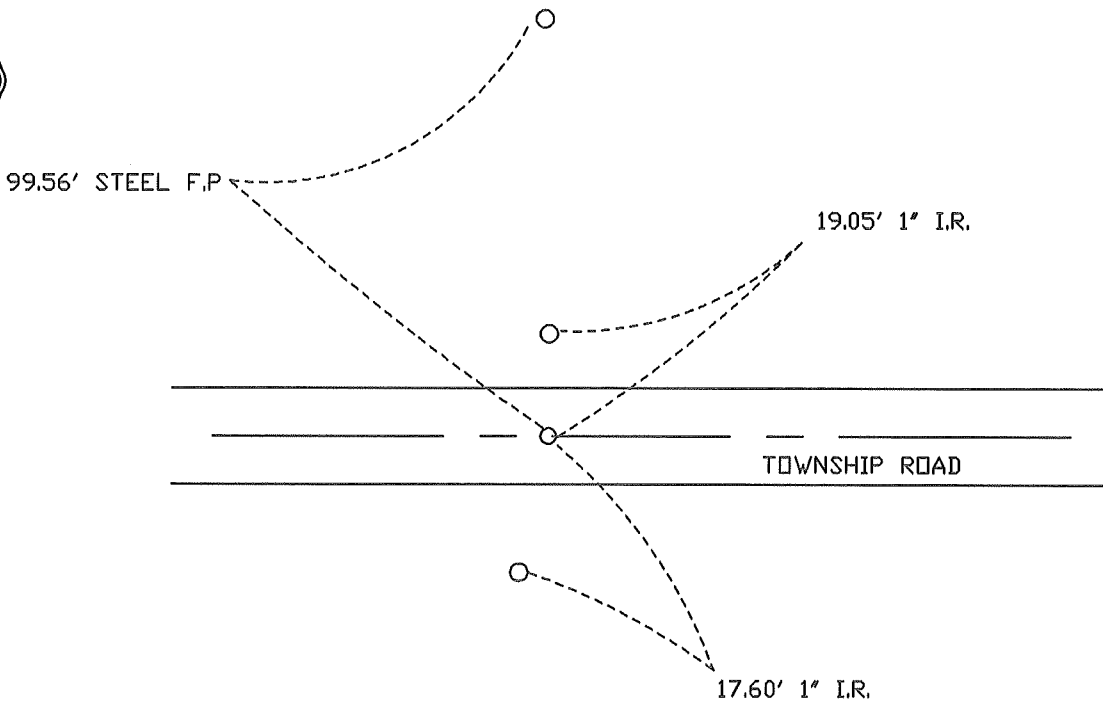
 SOUTH QUATER _____ Corner of Section 23, Township ^{102N}~~102N.~~, Range 29W., 5th P.M.
STATE OF MINNESOTA, County of MARTIN

At the corner location shown on the sketch:

 On 5-13-97 found a 3/4" * 20" I.P.
DATE
 left monument as found, lowered monument, removed monument (explain)

 On 5-13-97 placed a 5/8" * 24" I.R. W/ALUM. CAP (4" DEEP).
DATE

SKETCH OF REFERENCE TIES



Statement of evidence relative to this corner location is on back of page.

I hereby certify that this document and the data contained herein was prepared by me or under my direct supervision.

SIGNATURE DATE

Registration No. _____

 Land Surveyor, Professional Engineer
 County Surveyor, County Engineer

OFFICE OF THE REGISTER OF DEEDS

County of _____

I hereby certify that this document was filed in the Reg. of Deeds office at

_____, M. on the

_____, day of _____, A.D., 19____

Register of Deeds _____

By _____, Deputy

DOCUMENT NO. _____