

# CERTIFICATE OF LOCATION OF GOVERNMENT CORNER

NASHVILLE TWP.

SOUTH EAST

Corner of Section 23, Township 102N<sup>101W</sup>, Range 29W., 5th P.M.

STATE OF MINNESOTA, County of MARTIN

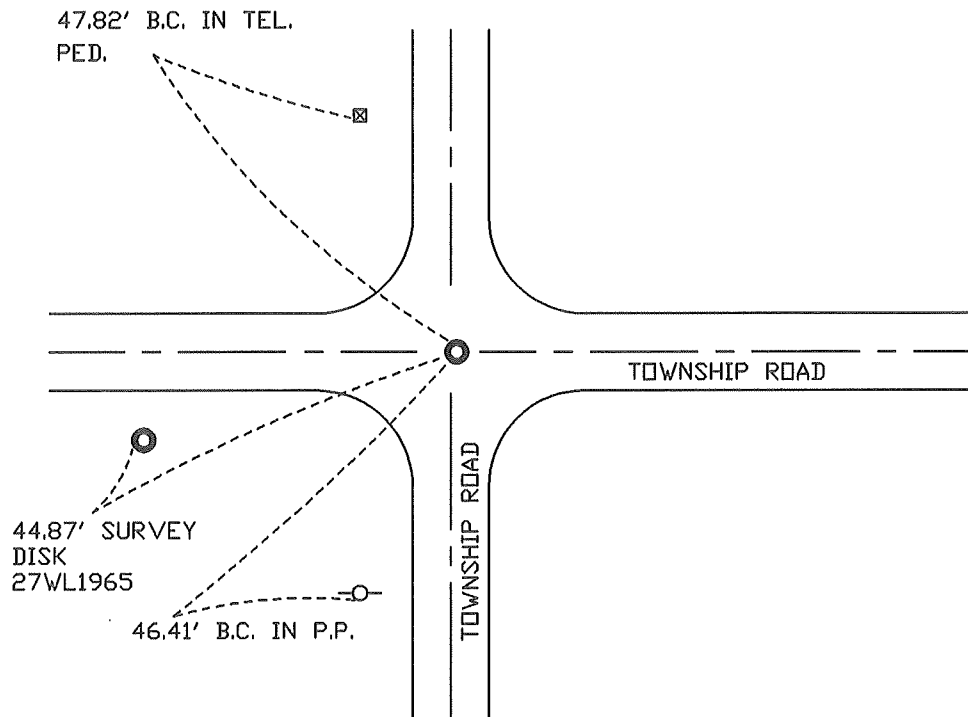
At the corner location shown on the sketch:

On 5-13-97 found a CONCRETE BLOCK (11" DEEP)  
DATE

left monument as found,  lowered monument,  removed monument (explain)

On 5-13-97 Placed a 5/8" \* 24" I.R. W/ALUM. CAP OVER BLOCK.  
DATE

## SKETCH OF REFERENCE TIES



Statement of evidence relative to this corner location is on back of page.

I hereby certify that this document and the data contained herein was prepared by me or under my direct supervision.

\_\_\_\_\_  
SIGNATURE DATE

Registration No. \_\_\_\_\_

- Land Surveyor,  Professional Engineer
- County Surveyor,  County Engineer

### OFFICE OF THE REGISTER OF DEEDS

County of \_\_\_\_\_

I hereby certify that this document was filed in the Reg. of Deeds office at \_\_\_\_\_ M. on the

\_\_\_\_ day of \_\_\_\_\_ A.D., 19 \_\_\_\_

Register of Deeds \_\_\_\_\_

By \_\_\_\_\_, Deputy

DOCUMENT NO. \_\_\_\_\_