

CERTIFICATE OF LOCATION OF GOVERNMENT CORNER

NASHVILLE TWP.

EAST QUARTER _____ Corner of Section 15, Township 102N, Range 29W, 5th P.M.

STATE OF MINNESOTA, County of MARTIN

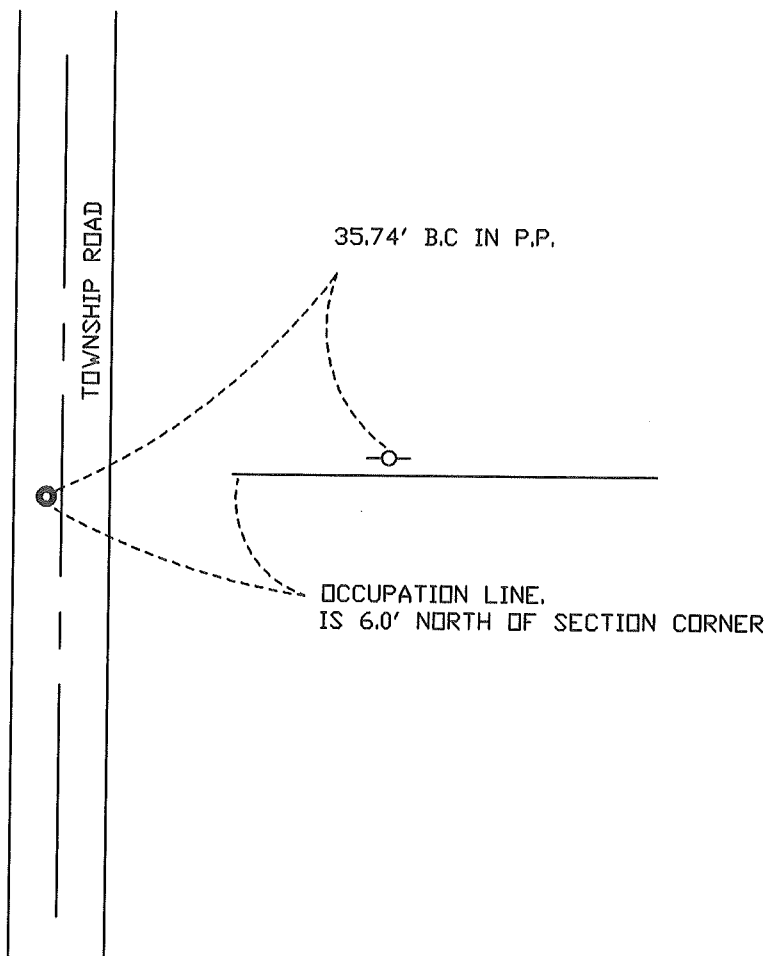
At the corner location shown on the sketch:

On 7-8-97 found a STONE "+" (23" DEEP).

left monument as found, lowered monument, removed monument (explain)

On 7-8-97 placed a 5/8" X 24" I.R. W/ALUM. CAP OVER STONE (4" DEEP)

SKETCH OF REFERENCE TIES



Statement of evidence relative to this corner location is on back of page.

I hereby certify that this document and the data contained herein was prepared by me or under my direct supervision.

SIGNATURE DATE

Registration No. _____

- Land Surveyor, Professional Engineer
- County Surveyor, County Engineer

OFFICE OF THE REGISTER OF DEEDS
County of _____

I hereby certify that this document was filed in the Reg. of Deeds office at _____, M. on the _____

_____ day of _____ A.D., 19 _____

Register of Deeds _____

By _____, Deputy

DOCUMENT NO. _____