

CERTIFICATE OF LOCATION OF GOVERNMENT CORNER

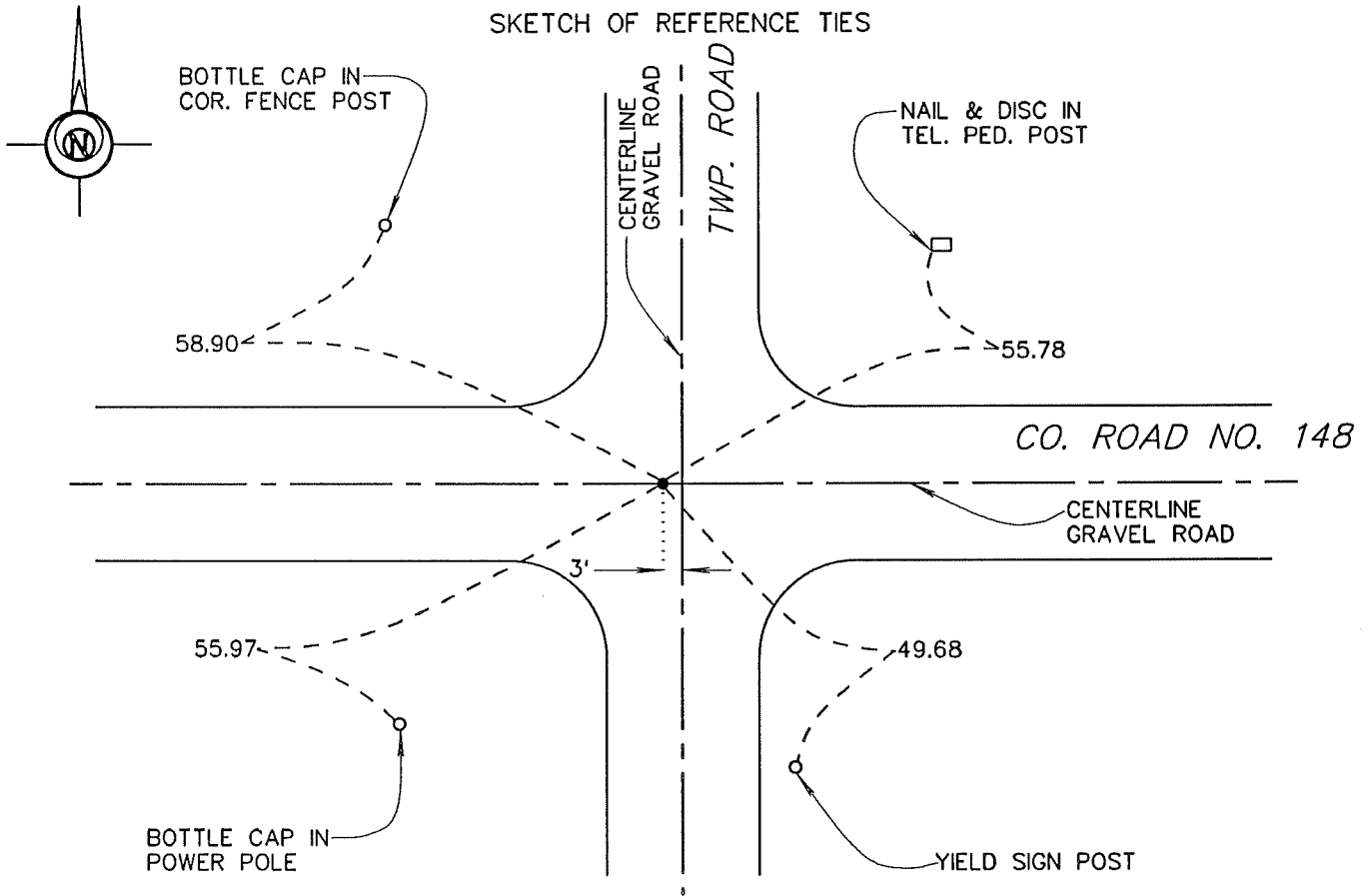
SOUTHEAST Corner of Section 14, Township 104 N., Range 29 W., 5TH P.M.
STATE OF MINNESOTA, County of MARTIN

At the corner location shown on the sketch:

On 7-10-95 found a 3/4" SQUARE IRON ROD (18" DEEP).
DATE

left monument as found, lowered monument, removed monument (explain)

On 7-10-95 placed a 5/8" X 24" IRON MONUMENT WITH AN ALUMINUM CAP OVER THE
DATE
THE FOUND ROD (4" DEEP).



Statement of evidence relative to this corner location is on back of page.

I hereby certify that this document and the data contained herein was prepared by me or under my direct supervision.

John Madson 5/13/96
SIGNATURE DATE

Registration No. 13593

- Land Surveyor, Professional Engineer
- County Surveyor, County Engineer

OFFICE OF THE COUNTY RECORDER
County of MARTIN

I hereby certify that this document was filed in the Co. Recorders Office at _____ M. on the _____ day of _____ A.D., 19____.

County Recorder _____

By _____, Deputy

DOCUMENT NO. _____

S.E. Cor., Sec. 14, T. 104 N., R. 29 W.
(Nashville Twp)

Statement of Evidence

The corner was originally established during the Public Land Survey of 1855, by John O. Brunius.

The Martin County Highway Dept. Tie Records indicate the corner was a stone "+" (38" deep), with a 1" steel rod over stone. Ties - 48.45 NE = Wood F.P.

On July 10, 1995, I found a 3/4" sq. iron rod (18" deep). Set a 5/8" x 24" iron rod with alum. cap over 3/4" rod. (4" deep)

The History shown was obtained from the Martin County Highway Dept. Tie Records and existing Certificates of Location, only. Further History information may be obtained from the Martin County Recorder.