

CERTIFICATE OF LOCATION OF GOVERNMENT CORNER

NASHVILLE TWP.

EAST QUARTER Corner of Section 10, Township 104N, Range 29W, 5th P.M.

STATE OF MINNESOTA, County of MARTIN

At the corner location shown on the sketch:

On 6-4-97 found 3/4" IRON PIN (8" DEEP). Set to (23" Deep).
DATE

left monument as found, lowered monument, removed monument (explain)

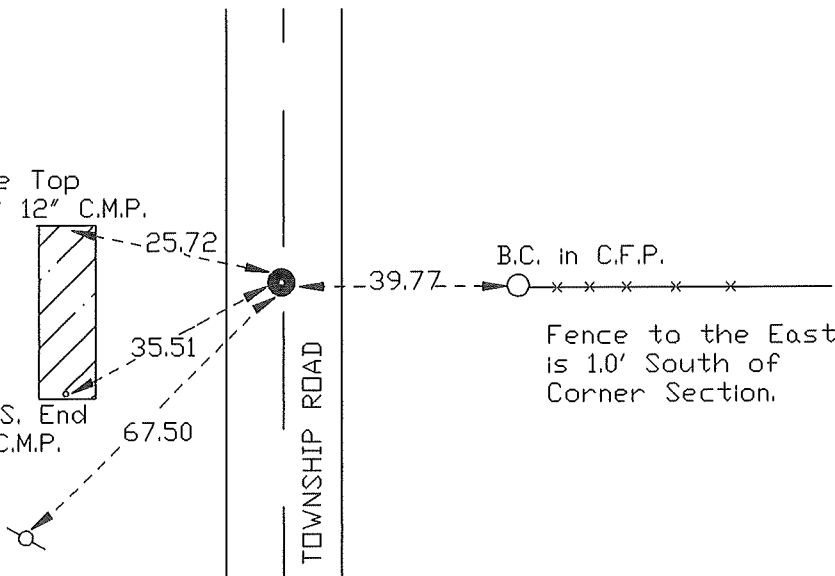
On 6-4-97 placed a 5/8" * 24" IRON ROD W/ALUM.OVER IRON PIN CAP (4" DEEP).
DATE

SKETCH OF REFERENCE TIES



Dimple on the Top
of N. End of 12" C.M.P.

Hole in the S. End
Top of 12" C.M.P.



Statement of evidence relative to this corner location is on back of page.

I hereby certify that this document and the data contained herein was prepared by me or under my direct supervision.

SIGNATURE DATE

Registration No. _____

- Land Surveyor, Professional Engineer
 County Surveyor, County Engineer

OFFICE OF THE REGISTER OF DEEDS
 County of MARTIN

I hereby certify that this document was filed in the Reg. of Deeds office at _____, M. on the

_____ day of _____ A.D., 19____
 Register of Deeds _____

By _____, Deputy

DOCUMENT NO. _____