

CERTIFICATE OF LOCATION OF GOVERNMENT CORNER

SOUTHEAST Corner of Section 7, Township 102 N., Range 32 W., 5TH P.M.

STATE OF MINNESOTA, County of MARTIN

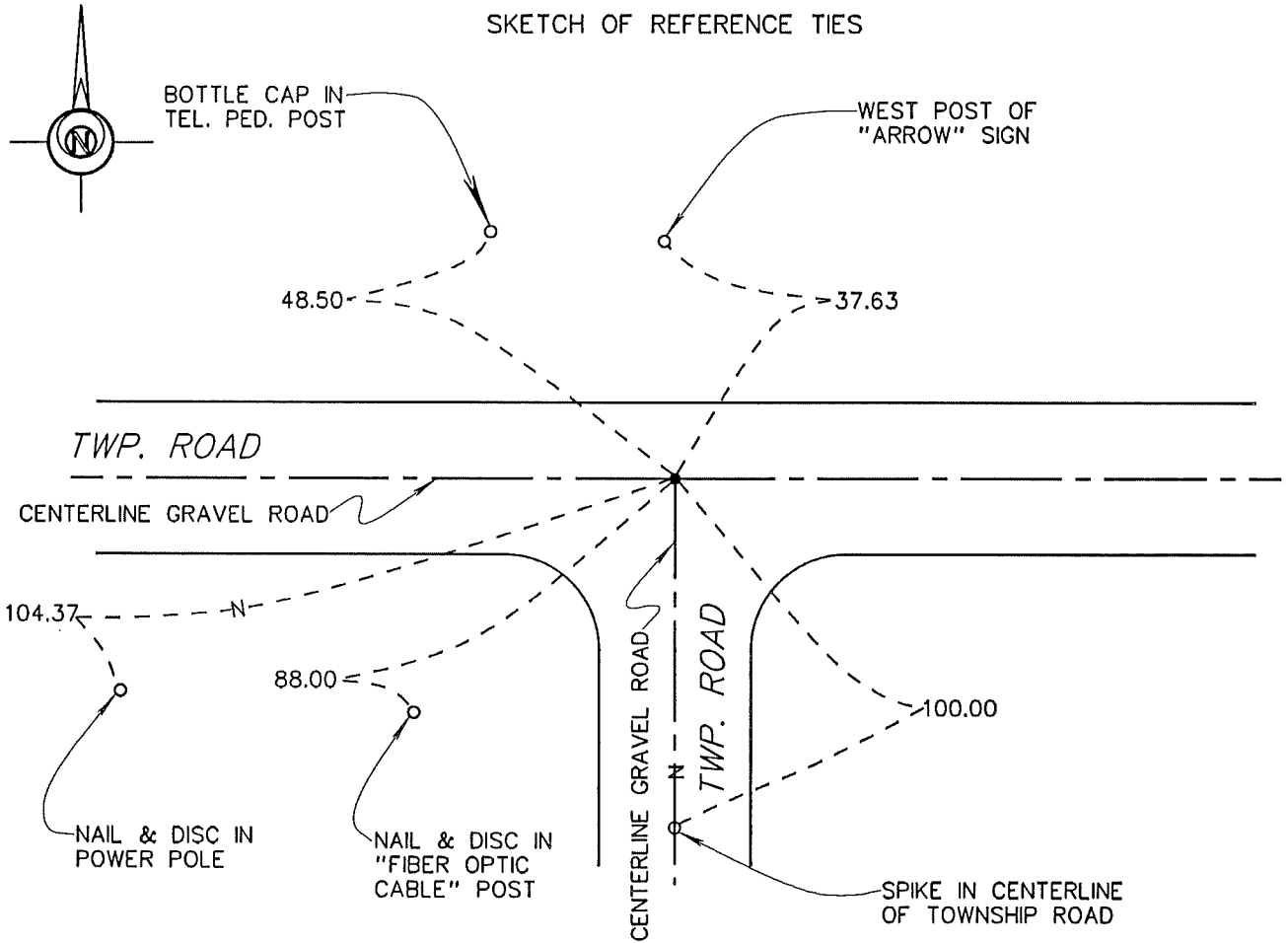
At the corner location shown on the sketch:

On 6-7-94 found a 3/4" x 10" IRON PIPE OVER A STONE.
DATE

left monument as found, lowered monument, removed monument (explain)

On 6-7-94 placed a DRILLED HOLE IN STONE & SET 5/8" X 30" IRON MONUMENT
DATE
WITH AN ALUMINUM CAP IN HOLE (6" DEEP).

SKETCH OF REFERENCE TIES



Statement of evidence relative to this corner location is on back of page.

I hereby certify that this document and the data contained herein was prepared by me or under my direct supervision.

John Madson 5/13/96
SIGNATURE DATE

Registration No. 13593

- Land Surveyor, Professional Engineer
- County Surveyor, County Engineer

OFFICE OF THE COUNTY RECORDER
County of MARTIN

I hereby certify that this document was filed in the Co. Recorders Office at _____ M. on the _____ day of _____ A.D., 19____.

County Recorder _____
By _____, Deputy
DOCUMENT NO. _____

**S.E. Cor., Sec. 7, T. 102 N., R. 32 W.
(Manyaska Twp)**

Statement of Evidence

The corner was originally established during the Public Land Survey of 1857, by John O. Brunius.

The Martin County Highway Dept. Tie Records indicate the corner was a stone "+" (15" deep), with a 1" steel rod over stone. Ties - 48.0 NW = UG Tel Cable Ped., 53.6 NE = Gas Line Marker Post

On June 7, 1994, I found a 3/4" x 10" iron pipe over stone "+". Drilled hole in stone and set a 5/8" x 30" iron rod with alum. cap over stone (6" deep)

The History shown was obtained from the Martin County Highway Dept. Tie Records and existing Certificates of Location, only. Further History information may be obtained from the Martin County Recorder.