

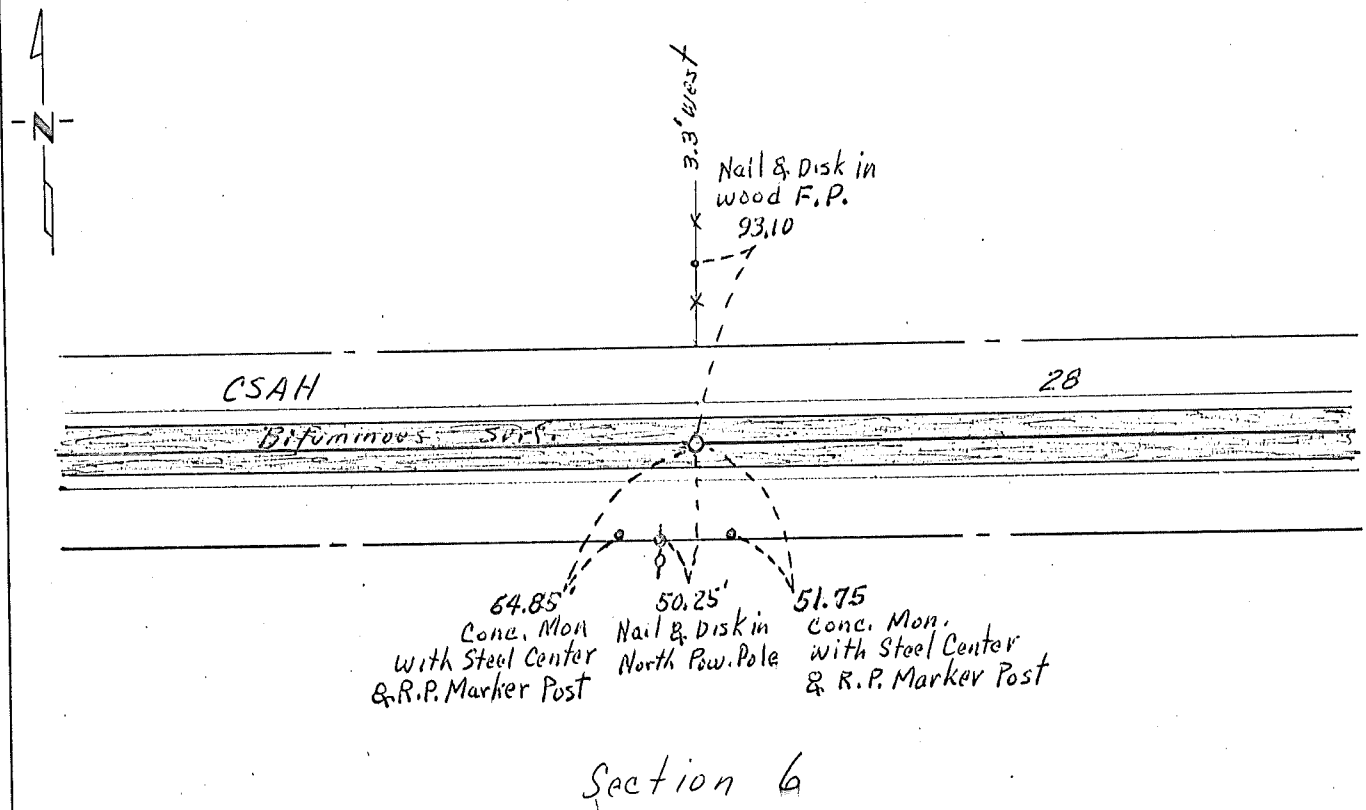
CERTIFICATE OF LOCATION OF GOVERNMENT CORNER

Center Corner of Section 6, Township 102 N., Range 32 W., 5th P.M.
 STATE OF MINNESOTA, County of Martin

At the corner location shown on the sketch:

- On 4-13-76 DATE ^{Placed} found a Concrete Monument, 4" x 18", with 3/4" Steel Rod
in Center, "5" Deep"
 - left monument as found, lowered monument, removed monument (explain)
- On 8-13-76 DATE placed a R.R. Spike, over Monument, "Surface"

SKETCH OF REFERENCE TIES



Statement of evidence relative to this corner location is on back of page. (over)

I hereby certify that this document and the data contained herein was prepared by me or under my direct supervision.

SIGNATURE DATE

Registration No. 10,000

- Land Surveyor, Professional Engineer
- County Surveyor, County Engineer

OFFICE OF THE COUNTY RECORDER

County of _____

I hereby certify that this document was filed in the Co. Recorders office at _____ .M. on the _____ day of _____ A.D., 19 _____

County Recorder _____

By _____, Deputy

DOCUMENT NO. _____

Statement of Evidence:

Stone "t" Lost during Construction, 1975, Replaced with a
Concrete Monument, 4" x 18" with $\frac{3}{4}$ " Steel Rod in Center,
using existing Ties.

J.A.B.
Martin County Hwy. Dept.

CERTIFICATE OF LOCATION OF GOVERNMENT CORNER

MANYASKA

MC 26 _____ Corner of Section 6, Township T102N, Range R32W, 5th P.M.

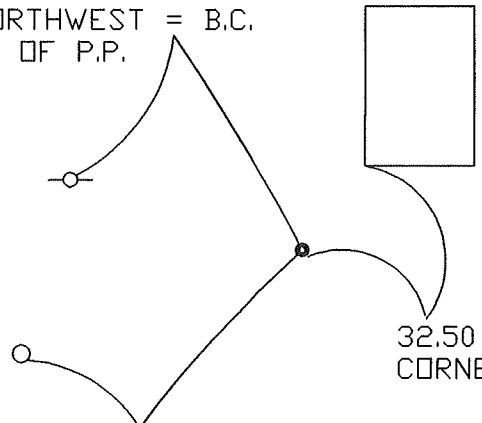
STATE OF MINNESOTA, County of MARTIN

At the corner location shown on the sketch:

- On 3-2-00 found a ALL EVIDENCE LOST DURING THE DAYS WHEN THE
AREA WAS A CITY DUMP
 left monument as found, lowered monument, removed monument (explain)
- On 3-2-00 Placed a SET AN IRON ROD W/ALUM. CAP ON A STRAIGHT
LINE (SW. COR. & S 1/4 COR.) 1893 PRORATED DIST. (1" DEEP)

SKETCH OF REFERENCE TIES

117.63 WEST-NORTHWEST = B.C.
IN SOUTH POLE OF P.P.



32.50 NORTH-NORTHEAST = SOUTHWEST
CORNER CONCRETE BOAT RAMP

133.00 WEST-SOUTHWEST = B.C. IN
SOUTH GATE POST

Statement of evidence relative to this corner location is on back of page.

I hereby certify that this document and the data contained herein was prepared by me or under my direct supervision.

_____ SIGNATURE _____ DATE

Registration No. _____

- Land Surveyor, Professional Engineer
- County Surveyor, County Engineer

OFFICE OF THE REGISTER OF DEEDS
County of MARTIN

I hereby certify that this document was filed in the Reg. of Deeds office at _____M. on the _____

_____ day of _____ A.D., 19____
Register of Deeds _____

By _____, Deputy

DOCUMENT NO. _____