

# CERTIFICATE OF LOCATION OF GOVERNMENT CORNER

MANAYASKA TWP.

CENTER Corner of Section 5, Township 102N., Range 32W., 5th P.M.

STATE OF MINNESOTA, County of MARTIN

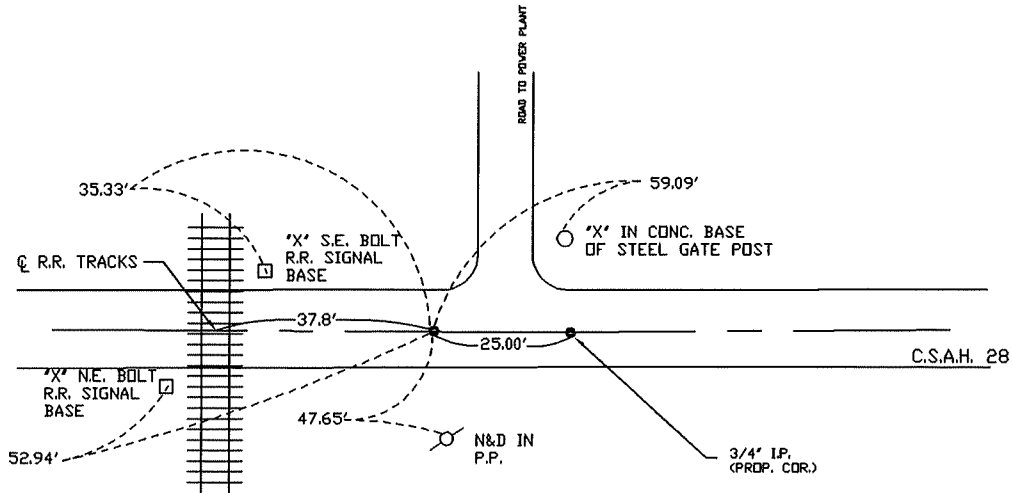
At the corner location shown on the sketch:

On 9-2-99 found a 3/4" I.P. (SURF.) & R.R. SPIKE (SURF.) 0.22' W. OF I.P.  
DATE

left monument as found,  lowered monument,  removed monument (explain)

On 9-2-99 placed a REMOVED R.R. SPIKE & LEFT I.P. INPLACE  
DATE

## SKETCH OF REFERENCE TIES



Statement of evidence relative to this corner location is on back of page.

I hereby certify that this document and the data contained herein was prepared by me or under my direct supervision.

\_\_\_\_\_  
SIGNATURE DATE

Registration No. \_\_\_\_\_

- Land Surveyor,  Professional Engineer
- County Surveyor,  County Engineer

OFFICE OF THE REGISTER OF DEEDS  
County of \_\_\_\_\_

I hereby certify that this document was filed in the Reg. of Deeds office at

\_\_\_\_\_, M. on the

\_\_\_\_ day of \_\_\_\_\_ A.D., 19\_\_\_\_

Register of Deeds \_\_\_\_\_

By \_\_\_\_\_, Deputy

DOCUMENT NO. \_\_\_\_\_

**CENTER SEC. 5, T. 102 N., R. 32 W.  
(MANYASKA TWP.)**

STONE "X", LOST DURING I-90 CONSTRUCTION IN 1974. REPLACED BY MARTIN COUNTY HWY. DEPT. WITH A CONC. MON., (4" X 18" WITH 3/4" STEEL ROD IN CENTER) USING EXISTING TIES FROM MNDOT. (4-13-1976)

MARTIN COUNTY HWY. DEPT. PLACED A R.R. SPIKE (SURF.) OVER CONC. MON. (8-16-1976)

BOLTON & MENK PLACED A R.R. SPIKE 5.52' WEST OF R.R. SPIKE SET BY COUNTY. (10-1988)

JOHN MADSEN PLACED A 3/4" O.D. X 24" IRON MON. AT INTERSECTION OF N.-S. & E.-W. 1/4 LINES AND REMOVED R.R. SPIKE SET BY COUNTY HWY. DEPT. (COR IS 0.22' E. OF R.R. SPIKE SET BY BOLTON & MENK) (6-28-1989)

MARTIN COUNTY HWY. DEPT. RETIED CORNER SET BY MADSEN AND REMOVED R.R. SPIKE SET BY BOLTON & MENK. (9-2-1999)