

# CERTIFICATE OF LOCATION OF GOVERNMENT CORNER

MANYASKA

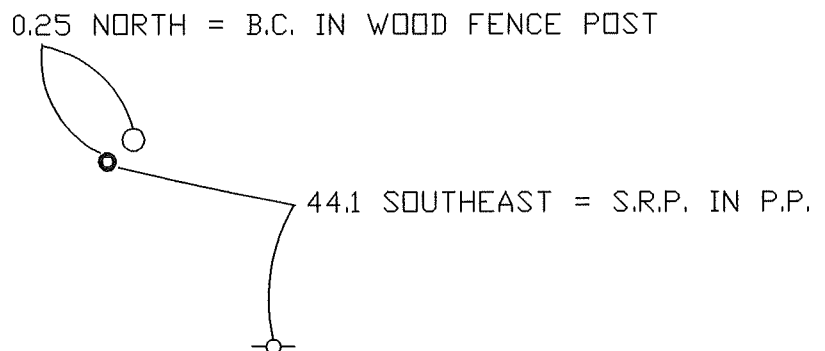
SOUTHEAST Corner of Section 4, Township T102-N, Range R32W, 5th P.M.

STATE OF MINNESOTA, County of MARTIN

At the corner location shown on the sketch:

- On 10-3-00 found a 3/4" IRON PIN  
DATE
- left monument as found,  lowered monument,  removed monument (explain)
- On 10-3-00 Placed a IRON ROD W/ALUM. CAP (PROTRUDING 2")  
DATE

## SKETCH OF REFERENCE TIES



Statement of evidence relative to this corner location is on back of page.

I hereby certify that this document and the data contained herein was prepared by me or under my direct supervision.

\_\_\_\_\_  
SIGNATURE DATE

Registration No. \_\_\_\_\_

- Land Surveyor,  Professional Engineer
- County Surveyor,  County Engineer

OFFICE OF THE REGISTER OF DEEDS  
County of MARTIN

I hereby certify that this document was filed in the Reg. of Deeds office at \_\_\_\_\_ M. on the

\_\_\_\_\_ day of \_\_\_\_\_ A.D., 19\_\_\_\_  
Register of Deeds \_\_\_\_\_

By \_\_\_\_\_, Deputy  
DOCUMENT NO. \_\_\_\_\_

# CERTIFICATE OF LOCATION OF GOVERNMENT CORNER

SouthEast 1/4 Corner of Section 4, Township 102 N, Range 32W, 5th P.M.

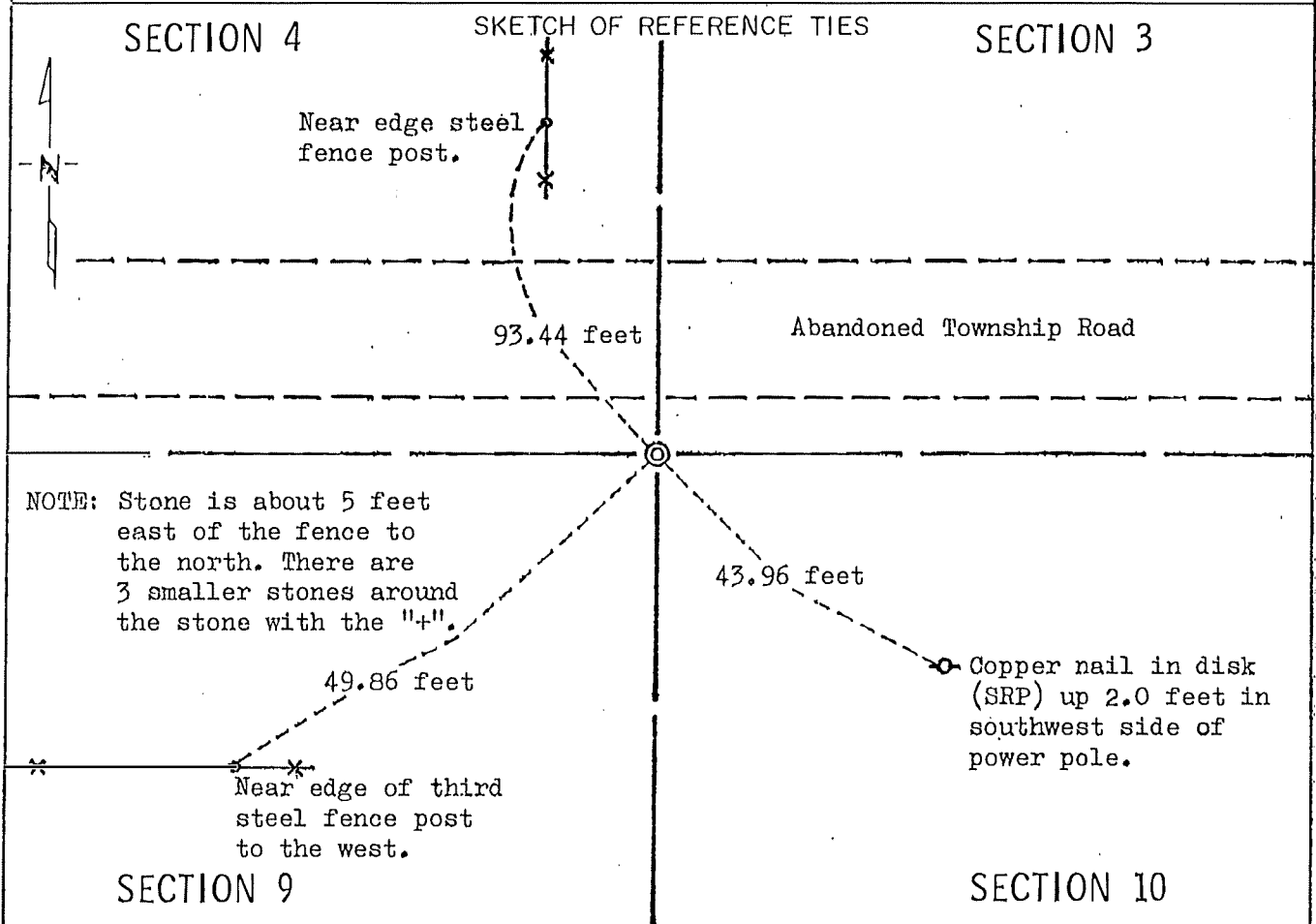
STATE OF MINNESOTA, County of MARTIN

At the corner location shown on the sketch:

On Apr. 3, 1981 found a  $\frac{3}{4}$  inch iron pin down 1.0 foot below surface over a stone with chiseled "+" 2.5 feet below surface.

left monument as found,  lowered monument,  removed monument (explain)

On \_\_\_\_\_ placed a \_\_\_\_\_



Statement of evidence relative to this corner location is on back of page.

I hereby certify that this document and the data contained herein was prepared by me or under my direct supervision.

S. Eldon Lober Nov. 12, 1981  
SIGNATURE DATE

Registration No. 11933

Land Surveyor,  Professional Engineer

County Surveyor,  County Engineer

OFFICE OF THE COUNTY RECORDER

County of Martin

I hereby certify that this document was filed in the Co. Recorders office at 11:00 A.M. on the 1st day of February A.D., 1982

County Recorder [Signature]

By \_\_\_\_\_, Deputy

DOCUMENT NO. 265614

MICROFILMED

Statement of Evidence:

- Nov. 3, 1857 John Brunius - Original Public Land Survey notes read: "Set post corner to secs 3,4,9&10 drove a charred stake raised a mound of earth & sod with trench & pits & planted plum stones NE NW SE SW."
- Oct. 7, 1889 C. T. Montgomery, County Surveyor, wrote that all corners between the northeast corners of sections 8 and 10 were lost. He established the Northeast Corner of Section 9 at proportional distances between those corners and between the Northeast Corner of Section 4 and the East Quarter Corner of Section 9. "Drove cedar post to surface of ground, nail in top of post at cor., broken glass, two halfbricks, and stones buried around post - center of road."
- Nov. 1, 1904 George E. Sawyer, County Surveyor, identified the corner as a "large oak stake in crockery" as set by Montgomery in 1889. He "set stone with + on top of the stake."
- Circa 1932 Minnesota Highway Department right-of-way map for old T.H. 16 shows the land corner 391.0 feet north of T.H. 16 centerline. No monument is specified.
- Minnesota Highway Department location notes for Interstate 90 read: "Found  $\frac{3}{4}$ " Iron Pin, down 1.0'." One of the reference ties shows 43.78 feet southeast to a power pole. The Minnesota Highway Department right-of-way map and construction plans for I-90 both show the same information as the location notes.
- April 3, 1981 A Minnesota Department of Transportation field crew, consisting of George Koens, Roger Busse, and Mike Stoffregen, found a  $\frac{3}{4}$  inch iron pin, down one foot, over a stone with a chisèled "+". Three smaller stones were found around the stone with the "+". The crew was digging with hand tools and did not excavate below the stone.

I accept the stone with "+" found on April 3, 1981 as the perpetuation of the stake set by Montgomery, using lost methods in 1889, and I accept its position as the correct location of the land corner.

For additional information, including field measurements and photographs, contact the Minnesota Department of Transportation office in Windom.