

CERTIFICATE OF LOCATION OF GOVERNMENT CORNER

SOUTHEAST Corner of Section 35, Township 102 N., Range 32 W., 5TH P.M.

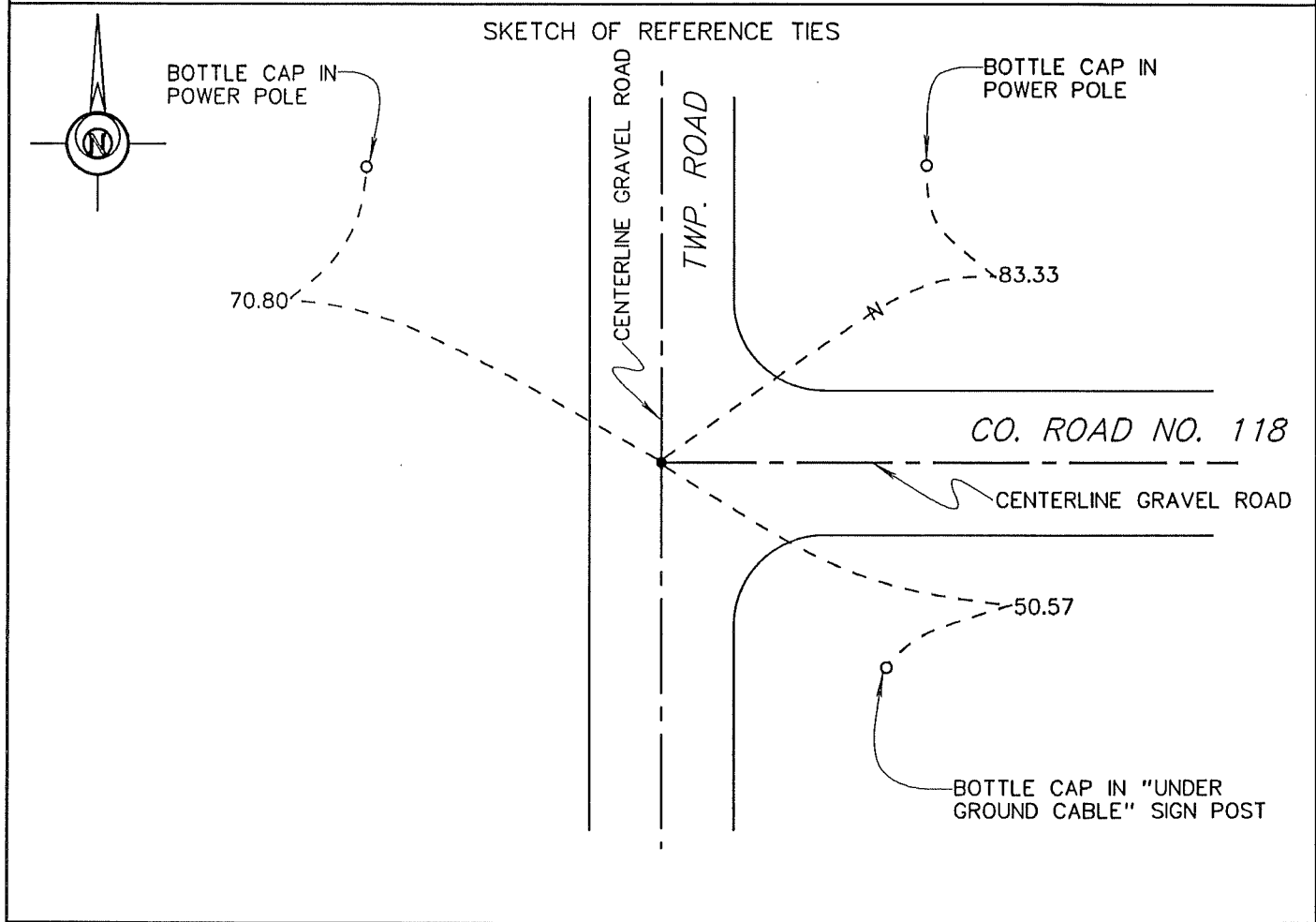
STATE OF MINNESOTA, County of MARTIN

At the corner location shown on the sketch:

On 6-6-94 found a 3/4" X 24" IRON PIPE (5" DEEP).
DATE

left monument as found, lowered monument, removed monument (explain)

On 6-6-94 placed a REPLACED WITH 5/8" X 24" IRON MONUMENT WITH AN
DATE
ALUMINUM CAP (4" DEEP).



Statement of evidence relative to this corner location is on back of page.

I hereby certify that this document and the data contained herein was prepared by me or under my direct supervision.

[Signature] 5/14/96
SIGNATURE DATE

Registration No. 13593

- Land Surveyor, Professional Engineer
- County Surveyor, County Engineer

OFFICE OF THE COUNTY RECORDER
County of MARTIN

I hereby certify that this document was filed in the Co. Recorders Office at _____ .M. on the _____ day of _____ A.D., 19____

County Recorder _____

By _____, Deputy

DOCUMENT NO. _____

**S.E. Cor., Sec. 35, T. 102 N., R. 32 W.
(Manyaska Twp)**

Statement of Evidence

The corner was originally established during the Public Land Survey of 1857, by James A. Langton.

The Martin County Highway Dept. Tie Records indicate the corner was a stone "+" over crockery (10" deep), with a R.R. Spk over stone (surface) Tie - 48.5 W = P. Line S.

On June 6, 1994, I found a 3/4" x 24" iron pipe (5" deep). Replaced with a 5/8" x 30" iron rod with alum. cap (4" deep)

The History shown was obtained from the Martin County Highway Dept. Tie Records and existing Certificates of Location, only. Further History information may be obtained from the Martin County Recorder.