

CERTIFICATE OF LOCATION OF GOVERNMENT CORNER

SOUTHEAST Corner of Section 34, Township 102 N., Range 32 W., 5TH P.M.

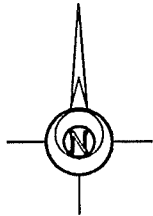
STATE OF MINNESOTA, County of MARTIN

At the corner location shown on the sketch:

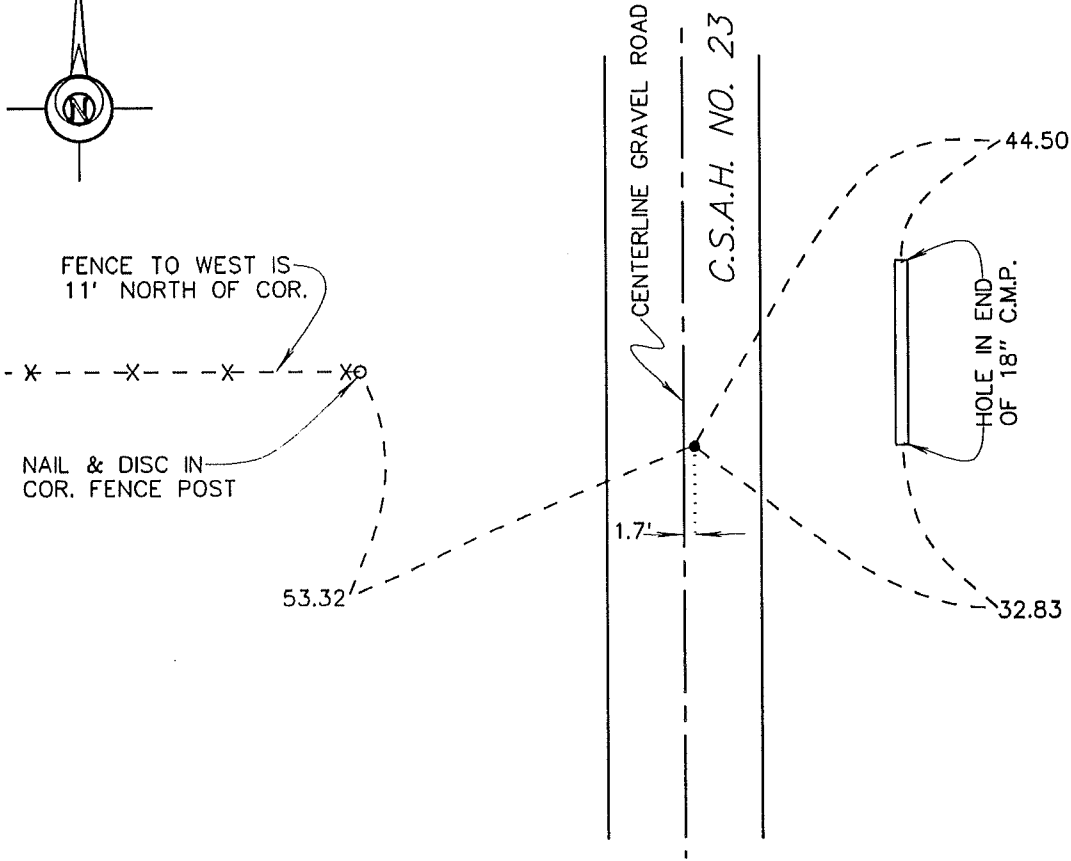
On 6-6-94 found a 1 1/4" X 15" IRON ROD (8" DEEP).
DATE

left monument as found, lowered monument, removed monument (explain)

On 6-6-94 placed a REPLACED WITH 5/8" X 24" IRON MONUMENT WITH AN
DATE
ALUMINUM CAP (4" DEEP).



SKETCH OF REFERENCE TIES



Statement of evidence relative to this corner location is on back of page.

I hereby certify that this document and the data contained herein was prepared by me or under my direct supervision.

John Madson 5/14/96
SIGNATURE DATE

Registration No. 13593

- Land Surveyor, Professional Engineer
- County Surveyor, County Engineer

OFFICE OF THE COUNTY RECORDER
County of MARTIN

I hereby certify that this document was filed in the Co. Recorders Office at _____ .M. on the _____ day of _____ A.D., 19____.

County Recorder _____

By _____, Deputy

DOCUMENT NO. _____

**S.E. Cor., Sec. 34, T. 102 N., R. 32 W.
(Manyaska Twp)**

Statement of Evidence

The corner was originally established during the Public Land Survey of 1857, by James A. Langton.

The Martin County Highway Dept. Tie Records indicate the corner was a stone, lost during construction in 1966, a 1 1/4" iron pipe was set as the corner. Ties - 114.4 WNW = Hub in Fence Line, 100.0 NW = I.P., 13.0 N = Fence Line W.

On June 6, 1994, I found a 1 1/4" x 15" iron rod (8" deep). Replaced rod with a 5/8" x 30" iron rod with alum. cap (4" deep)

The History shown was obtained from the Martin County Highway Dept. Tie Records and existing Certificates of Location, only. Further History information may be obtained from the Martin County Recorder.

CERTIFICATE OF LOCATION OF CORNER

Reference Southeast Corner of Section 34, Township 102N, Range 32W, 5 P.M.

STATE OF MINNESOTA, County of Martin

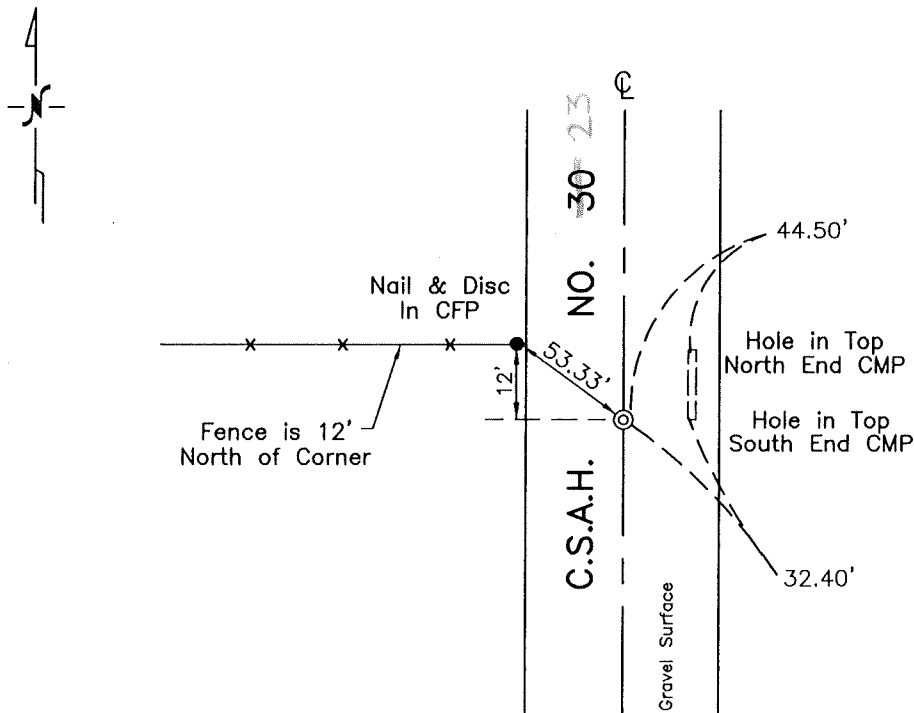
At the corner location shown on the sketch:

On Nov. 1996 found a 1 1/2" Aluminum Cap & Iron (4" Deep)
DATE

left monument as found, lowered monument, removed monument (explain)

On _____ placed a _____
DATE

SKETCH OF REFERENCE TIES



Statement of evidence relative to this corner is on the back of page.

I hereby certify that this document and the data contained herein was prepared by me or under my direct supervision.

SIGNATURE DATE

Registration No. 13309

- Land Surveyor, Professional Engineer
- County Surveyor, County Engineer

OFFICE OF THE COUNTY RECORDER

County of _____

I hereby certify that this document was filed in the Co. Recorders office at _____ P.M. on the _____ day of _____ A.D., 19____

County Recorder _____

By _____, Deputy

DOCUMENT NO. _____

Statement of Evidence

REFERENCE SOUTHEAST CORNER OF SECTION 34, T102N, R32W

The Public Land Survey of the North line of Township 101, Range 32 West of the Fifth Principal Meridian was run in 1857. The Northeast Corner of Section 3 was in the lake and not established.

In October, 1891, County Surveyor C.T. Montgomery (Survey No. 87-B-129) showed the corner in water.

In June, 1911, (Survey No. 65-E-30) Deputy County Surveyor George E. Sawyer established the corner by doubling from north using Montgomery methodology (No. 87-B-129).

Martin County Highway Department ties indicate that the stone was lost during construction in 1966, and that a 1 inch rod was set at the position.

In July, 1993, Lyle E. Moseng found a "1 inch iron stake over stone" marking the corner.

A 1 1/2 inch iron rod with aluminum cap was established by Madsen Land Surveying in June 1994 as part of the Martin County GPS project.

In November, 1996, Bolton & Menk, Inc. survey crew found a 1 1/2" iron rod with an aluminium cap marking the corner.

Analysis of record data and survey measurements support the monumented position as a valid perpetuation of the 1911 Sawyer position and a valid perpetuation of the line between Sections 3 and 34.