

# CERTIFICATE OF LOCATION OF GOVERNMENT CORNER

MANYASKA

EAST 1/4 Corner of Section 34, Township T102-N, Range R32W, 5th P.M.

STATE OF MINNESOTA, County of MARTIN

At the corner location shown on the sketch:

- On 5-15-00 found a IRON ROD W/ALUM. CAP (10" DEE ) RAISED TO (4"DEEP)  
DATE
- left monument as found,  lowered monument,  removed monument (explain)
- On \_\_\_\_\_ Placed a \_\_\_\_\_  
DATE

## SKETCH OF REFERENCE TIES

43.50 WEST = STEEL  
FENCE POST

Statement of evidence relative to this corner location is on back of page.

I hereby certify that this document and the data contained herein was prepared by me or under my direct supervision.

\_\_\_\_\_  
SIGNATURE DATE

Registration No. \_\_\_\_\_

- Land Surveyor,  Professional Engineer
- County Surveyor,  County Engineer

OFFICE OF THE REGISTER OF DEEDS  
County of MARTIN

I hereby certify that this document was filed in the Reg. of Deeds office at \_\_\_\_\_M. on the

\_\_\_\_\_day of \_\_\_\_\_A.D., 19\_\_\_\_  
Register of Deeds \_\_\_\_\_

By \_\_\_\_\_, Deputy  
DOCUMENT NO. \_\_\_\_\_

# CERTIFICATE OF LOCATION OF GOVERNMENT CORNER

East Quarter \_\_\_\_\_ Corner of Section 34, Township 102N, Range 32W, 5 P.M.

STATE OF MINNESOTA, County of Martin

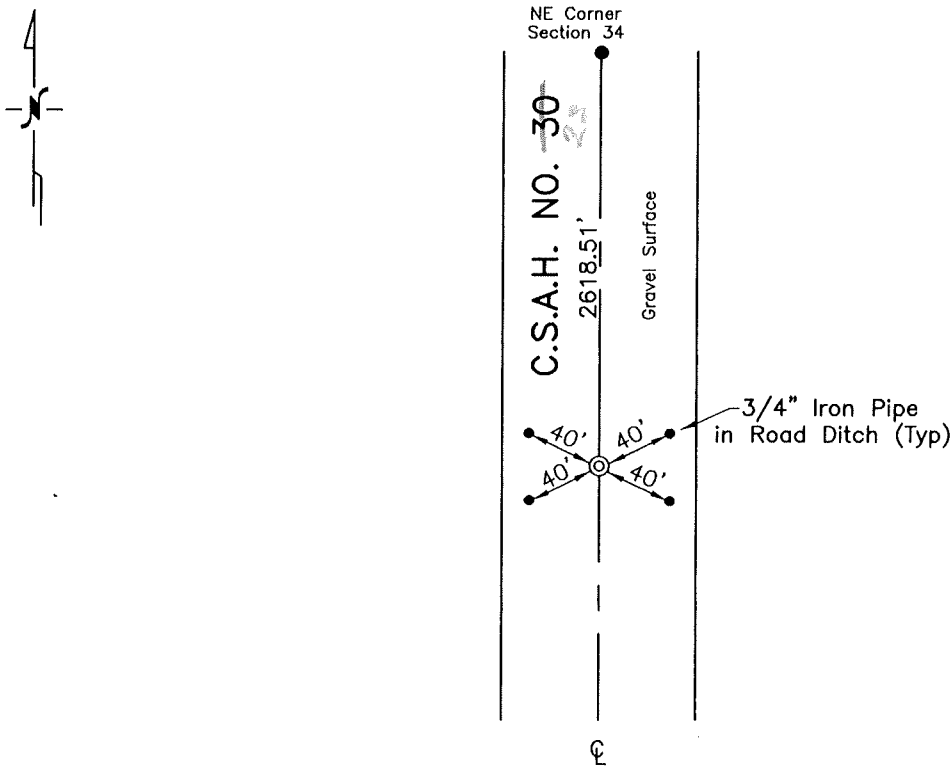
At the corner location shown on the sketch:

On Nov. 1996 found a Unable To Find Record Monument  
DATE

left monument as found,  lowered monument,  removed monument (explain)

On Nov. 1996 placed a 5/8"x6" Rebar By Madsen Survey (No. 9490) Ties  
DATE

## SKETCH OF REFERENCE TIES



Statement of evidence relative to this corner is on the back of page.

I hereby certify that this document and the data contained herein was prepared by me or under my direct supervision.

\_\_\_\_\_  
SIGNATURE DATE

Registration No. 13309

- Land Surveyor,  Professional Engineer
- County Surveyor,  County Engineer

OFFICE OF THE COUNTY RECORDER  
County of \_\_\_\_\_

I hereby certify that this document was filed in the Co. Recorders office at \_\_\_\_\_ P.M. on the \_\_\_\_\_ day of \_\_\_\_\_ A.D., 19\_\_

County Recorder \_\_\_\_\_

By \_\_\_\_\_, Deputy

DOCUMENT NO. \_\_\_\_\_

## Statement of Evidence

### EAST QUARTER CORNER OF SECTION 34, T102N, R32W

The Public Land Survey of Section 34, Township 102 North, Range 32 West of the Fifth Principal Meridian was run in 1857. A quarter section post was placed to mark the East Quarter Corner of Section 34.

In August, 1888, L.F. Brainerd, County Surveyor (Survey No. 576-A-264) "identified" the quarter corner.

In October, 1891, County Surveyor C.T. Montgomery (Survey No. 87-B-129) failed to identify the corner and could not learn if it had ever been "positively" known. He re-established the meander corner (No. 32) on East line of Section 34 proportionally between found meander corners on east and west ends of Holmes Lake and restored East Quarter corner at the proportional distance between Meander Corner 32 and Northeast Corner of Section 34. He set a granite boulder with a chiseled "1/4" and cross over a stake at the corner.

In July, 1897, Deputy County Surveyor George E. Sawyer (Survey No. 244-C-117) located the corner by the Montgomery stake. He then renewed the corner with a stone with chiseled cross.

In June, 1911, Sawyer (Survey No. 65-E-30) identified the corner.

In May, 1935, Sawyer (Survey No. 51-G-34) identified the corner by Survey 87-B-129 and set a pine stake on chiseled cross and a grey granite stone 18x14x8 with a chiseled cross at the surface.

In May, 1969, Martin County Highway Department ties show a stone with a chiseled cross, 30" deep, found and placed a 1 1/4" iron pipe over it.

In July, 1993, Lyle E. Moseng found an 1 1/4" iron pipe marking the corner.

In November, 1994, Madsen Land Surveying (Survey No. 9490) found a 1 1/4" iron pipe marking the corner. They renewed the corner with a 5/8" iron rod with an aluminum cap.

In November, 1996, a Bolton & Menk, Inc. survey crew was unable to find the Madsen monument. The corner was re-established using measurements from Madsen Survey No. 9490 and found iron pipe markers from that survey. A 5/8" rebar was set at the restored position.

Analysis of record data and survey measurements support the monumented position as a valid perpetuation of the Public Land Survey Corner.