

CERTIFICATE OF LOCATION OF GOVERNMENT CORNER

MANYASKA

SOUTH 1/4 _____ Corner of Section 33, Township T102-N, Range R32W, 5th P.M.

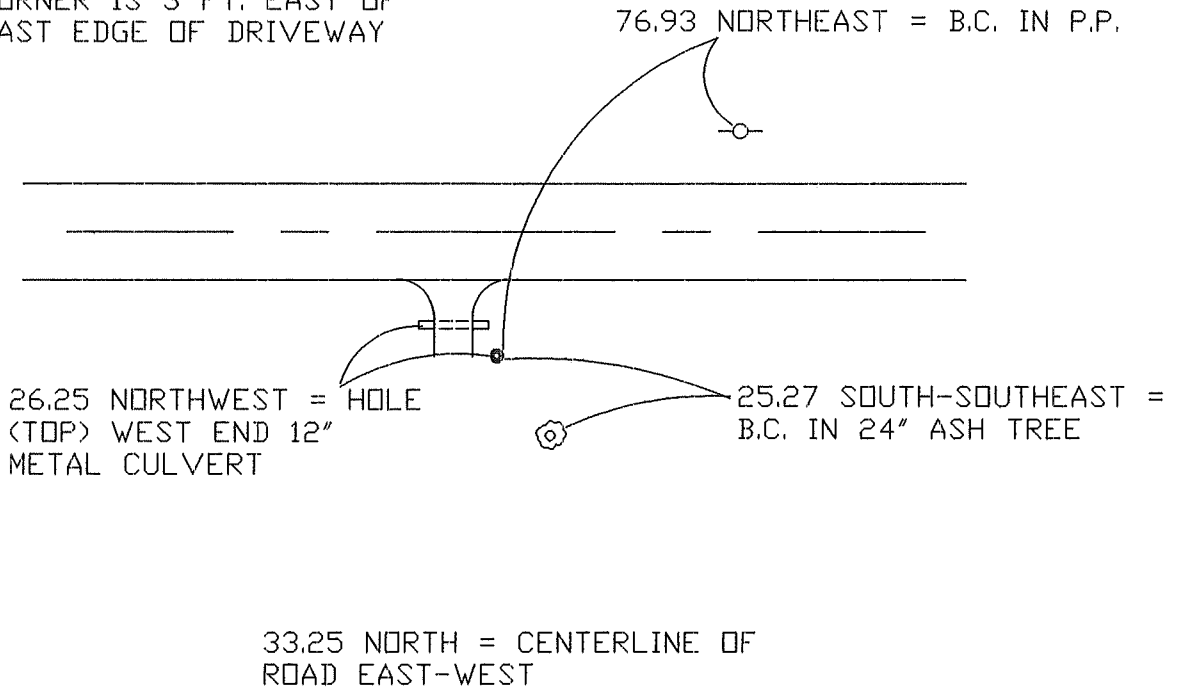
STATE OF MINNESOTA, County of MARTIN

At the corner location shown on the sketch:

- On 5-15-00 found a STONE + (16" DEEP)
DATE
- left monument as found, lowered monument, removed monument (explain)
- On 5-15-00 Placed a DRILLED A HOLE IN STONE & SET A
DATE
5/8" X 24" IRON ROD W/ALUM. CAP (4" DEEP)

SKETCH OF REFERENCE TIES

CORNER IS 3 FT. EAST OF
EAST EDGE OF DRIVEWAY



33.25 NORTH = CENTERLINE OF
ROAD EAST-WEST

Statement of evidence relative to this corner location is on back of page.

I hereby certify that this document and the data contained herein was prepared by me or under my direct supervision.

SIGNATURE DATE

Registration No. _____

- Land Surveyor, Professional Engineer
- County Surveyor, County Engineer

OFFICE OF THE REGISTER OF DEEDS
County of MARTIN

I hereby certify that this document was filed in the Reg. of Deeds office at _____ M. on the

_____ day of _____ A.D., 19____
Register of Deeds _____

By _____, Deputy
DOCUMENT NO. _____