

CERTIFICATE OF LOCATION OF GOVERNMENT CORNER

_____ East Quarter _____ Corner of Section 33, Township 102N, Range 32W, 5 P.M.

STATE OF MINNESOTA, County of _____ Martin _____

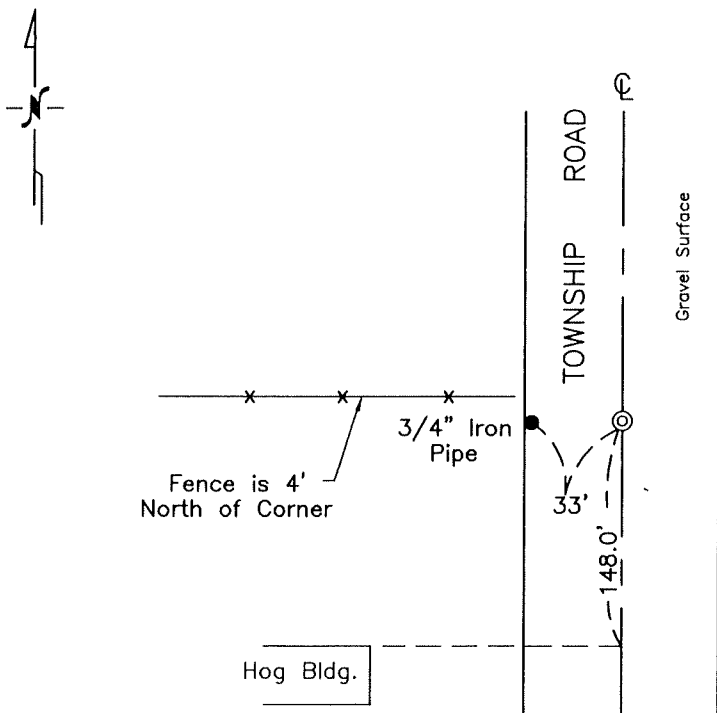
At the corner location shown on the sketch:

On Nov. 1996 found a 3/4" Iron Shaft (8" Deep)
DATE

left monument as found, lowered monument, removed monument (explain)

On _____ placed a _____
DATE

SKETCH OF REFERENCE TIES



Statement of evidence relative to this corner is on the back of page.

I hereby certify that this document and the data contained herein was prepared by me or under my direct supervision.

SIGNATURE DATE

Registration No. 13309

- Land Surveyor, Professional Engineer
 County Surveyor, County Engineer

OFFICE OF THE COUNTY RECORDER
County of _____

I hereby certify that this document was filed in the Co. Recorders office at _____ P.M. on the _____ day of _____ A.D., 19__

County Recorder _____

By _____, Deputy

DOCUMENT NO. _____

Statement of Evidence

EAST QUARTER CORNER OF SECTION 33, T102N, R32W

The Public Land Survey of Section 34, Township 102 North, Range 32 West of the Fifth Principal Meridian was run in 1857. A quarter section post was placed to mark the West Quarter corner of Section 34.

In August, 1888, County Surveyor Brainerd (Survey No. 574-A-263) "could not well measure" to the corner because of the pond.

In October, 1891, County Surveyor C.T. Montgomery (Survey No. 87-B-129) identified the corner by a stone.

In October, 1895, C.T. Montgomery (Survey No. 78-C-38 1/2) found stone lying on surface. Reset same stone doubling distance from Sixteenth and Northwest corners north. He deposited crockery and a stone with chiseled cross.

In October, 1926, (Survey No. 177-F-61) County Surveyor George E. Sawyer located the corner using survey 87-B-129 and found a stone. He renewed crockery and reset same stone with chiseled cross.

In October, 1927, Sawyer (Survey No. 234-F-81) identified the corner using survey 78-C-38 1/2. He built up crockery above stone and set another grey granite stone with a chiseled cross.

In July, 1952, Frank O. Jones, County Surveyor (Survey No. 699) identified the corner by a stone with a chiseled cross using Survey No. 234-F-81.

In December, 1987, Martin County Highway Department found a stone with a chiseled cross, 20" deep and placed a 3/4" square steel rod over it at 3" deep.

In December, 1987, Madsen Land Surveying (Survey No. 87167) located the corner by a 3/4" square rod, 3" deep.

In November, 1994, John Madsen Land Surveying (Survey No. 9490) found an iron monument marking the corner.

In July, 1995 and again in November, 1996, a Bolton & Menk, Inc. survey crew found a 3/4" square rod marking the corner.

Analysis of record data and survey measurements support the monumented position as a valid perpetuation of the Public Land Survey Corner.