

# CERTIFICATE OF LOCATION OF GOVERNMENT CORNER MANYASKA

EAST 1/4 Corner of Section 31, Township T102N, Range R32W, 5th P.M.

STATE OF MINNESOTA, County of MARTIN

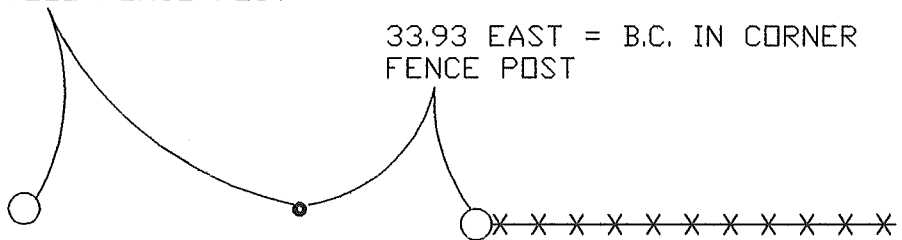
At the corner location shown on the sketch:

- On 10-11-00 found a 3/4" IRON PIN ( 3" DEEP ) OVER STONE  
DATE
- left monument as found,  lowered monument,  removed monument (explain)
- On 10-11-00 Placed a 5/8" X 18" IRON ROD W/ALUM. CAP ( 3" DEEP )  
DATE

## SKETCH OF REFERENCE TIES

56.55 WEST = STEEL FENCE POST

33.93 EAST = B.C. IN CORNER  
FENCE POST



0.5 SOUTH = FENCE EAST

Statement of evidence relative to this corner location is on back of page.

I hereby certify that this document and the data contained herein was prepared by me or under my direct supervision.

\_\_\_\_\_  
SIGNATURE

\_\_\_\_\_  
DATE

Registration No. \_\_\_\_\_

- Land Surveyor,       Professional Engineer
- County Surveyor,    County Engineer

OFFICE OF THE REGISTER OF DEEDS

County of MARTIN

I hereby certify that this document was filed in the Reg. of Deeds office at

\_\_\_\_\_, M. on the

\_\_\_\_ day of \_\_\_\_\_ A.D., 19\_\_\_\_

Register of Deeds \_\_\_\_\_

By \_\_\_\_\_, Deputy

DOCUMENT NO. \_\_\_\_\_