

CERTIFICATE OF LOCATION OF GOVERNMENT CORNER

MANYASKA

SOUTH 1/4 COR _____ Corner of Section 3, Township T 102 N, Range R 32 W 5th P.M.

STATE OF MINNESOTA, County of MARTIN

At the corner location shown on the sketch:

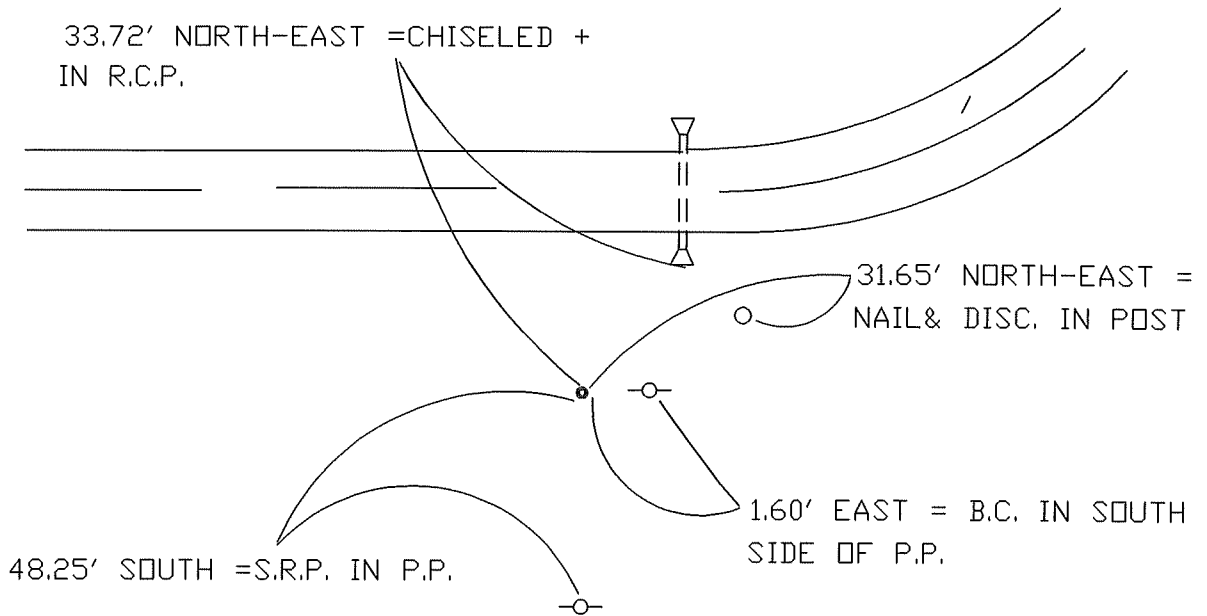
- On 11-4-97 found a STONE (18" DEEP)
DATE
- left monument as found, lowered monument, removed monument (explain)
- On 11-4-97 Placed a DRILLED A HOLE IN STONE & SET A 5/8" X 24"
DATE
I.R. W/ALUM. CAP OVER STONE

SKETCH OF REFERENCE TIES



28.58' SOUTH-SOUTH-EAST =
CENTERLINE OF NORTH RAIL OF
RAIL-ROAD TRACK

33.72' NORTH-EAST = CHISELED +
IN R.C.P.



31.65' NORTH-EAST =
NAIL & DISC. IN POST

1.60' EAST = B.C. IN SOUTH
SIDE OF P.P.

48.25' SOUTH = S.R.P. IN P.P.

Statement of evidence relative to this corner location is on back of page.

I hereby certify that this document and the data contained herein was prepared by me or under my direct supervision.

SIGNATURE DATE

Registration No. _____

- Land Surveyor, Professional Engineer
- County Surveyor, County Engineer

OFFICE OF THE REGISTER OF DEEDS

County of MARTIN

I hereby certify that this document was filed in the Reg. of Deeds office at

_____, M. on the

_____ day of _____ A.D., 19____

Register of Deeds _____

By _____, Deputy

DOCUMENT NO. _____

**S. 1/4 Cor. Sec. 3, T. 102 N., R. 32 W.
(Manyaska Twp)**

Statement of Evidence

The corner was originally established during the Public Land Survey of 1857, by John O. Brunius.

According to the recorded Certificate of Location, Doc. No. 265646, Date, April 2, 1981, the corner was a 3/4" iron pin over a large stone. (.5 deep)

On June 4, 1994, I found a 3/4" x 24" iron pipe. Replaced pipe with a 5/8" x 30" iron rod with alum. cap