

CERTIFICATE OF LOCATION OF GOVERNMENT CORNER

EAST QUARTER Corner of Section 3, Township 102 N., Range 32 W., 5TH P.M.

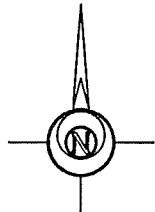
STATE OF MINNESOTA, County of MARTIN

At the corner location shown on the sketch:

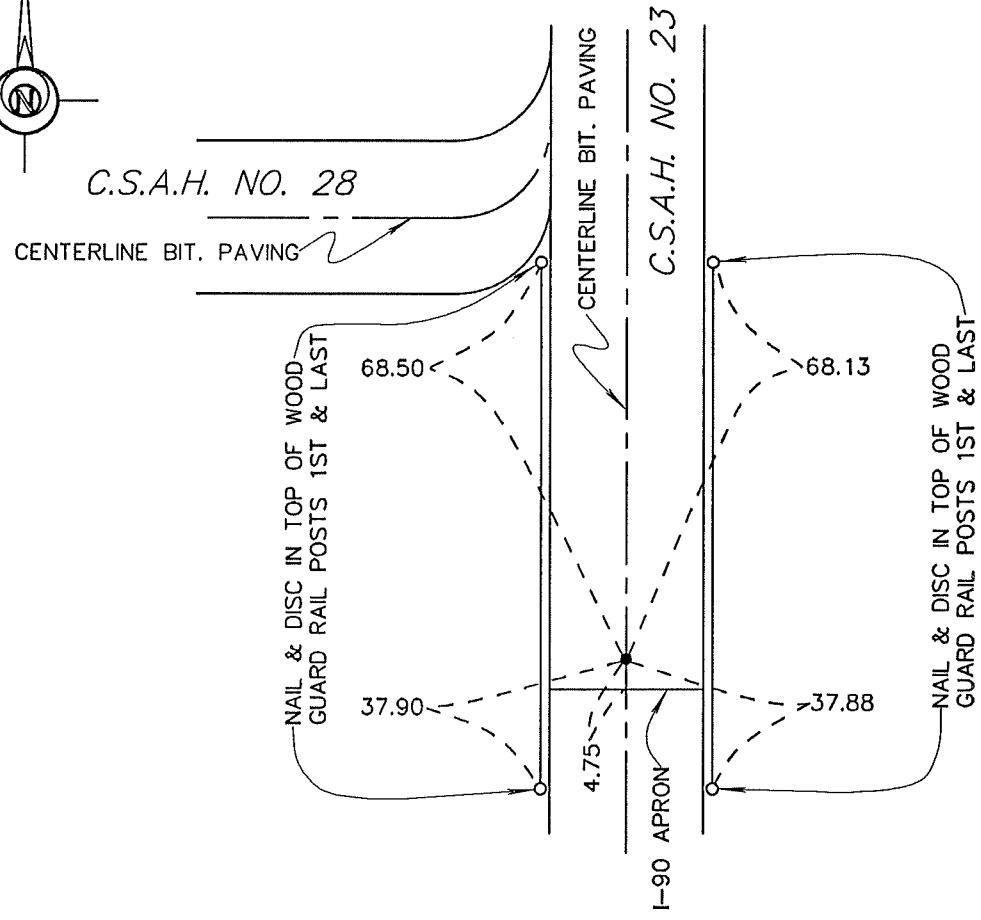
On 6-4-94 found a 6" NAIL AT TIE LOCATION IN BITUMINOUS PAVING.
DATE

left monument as found, lowered monument, removed monument (explain)

On 6-4-94 placed a REPLACED WITH 5/8" X 24" IRON MONUMENT WITH AN
DATE
ALUMINUM CAP (SURFACE).



SKETCH OF REFERENCE TIES



Statement of evidence relative to this corner location is on back of page.

I hereby certify that this document and the data contained herein was prepared by me or under my direct supervision.

John Madson 5/13/96
SIGNATURE DATE

Registration No. 13593

- Land Surveyor, Professional Engineer
- County Surveyor, County Engineer

OFFICE OF THE COUNTY RECORDER
County of MARTIN

I hereby certify that this document was filed in the Co. Recorders Office at _____ .M. on the _____ day of _____ A.D., 19____.

County Recorder _____

By _____, Deputy

DOCUMENT NO. _____

**E. 1/4 Cor. Sec. 3, T. 102 N., R. 32 W.
(Manyaska Twp)**

Statement of Evidence

The corner was originally established during the Public Land Survey of 1857, by John O. Brunius.

According to the recorded Certificate of Location, Doc. No. 255384, 265643

Date, April 19, 1976, the corner was a stone "+", lost during construction in 1974, a 60 d Spk was set using existing tie information. On April 2, 1981, a 60 d Spk was located and identified as the corner.

On June 4, 1994, I found a 60 d Spk in bit. paving, in accordance with previous tie information. Replaced Spk with a 5/8" x 24" iron rod with alum. cap.

The History shown was obtained from the Martin County Highway Dept. Tie Records and existing Certificates of Location, only. Further History information may be obtained from the Martin County Records Office.