

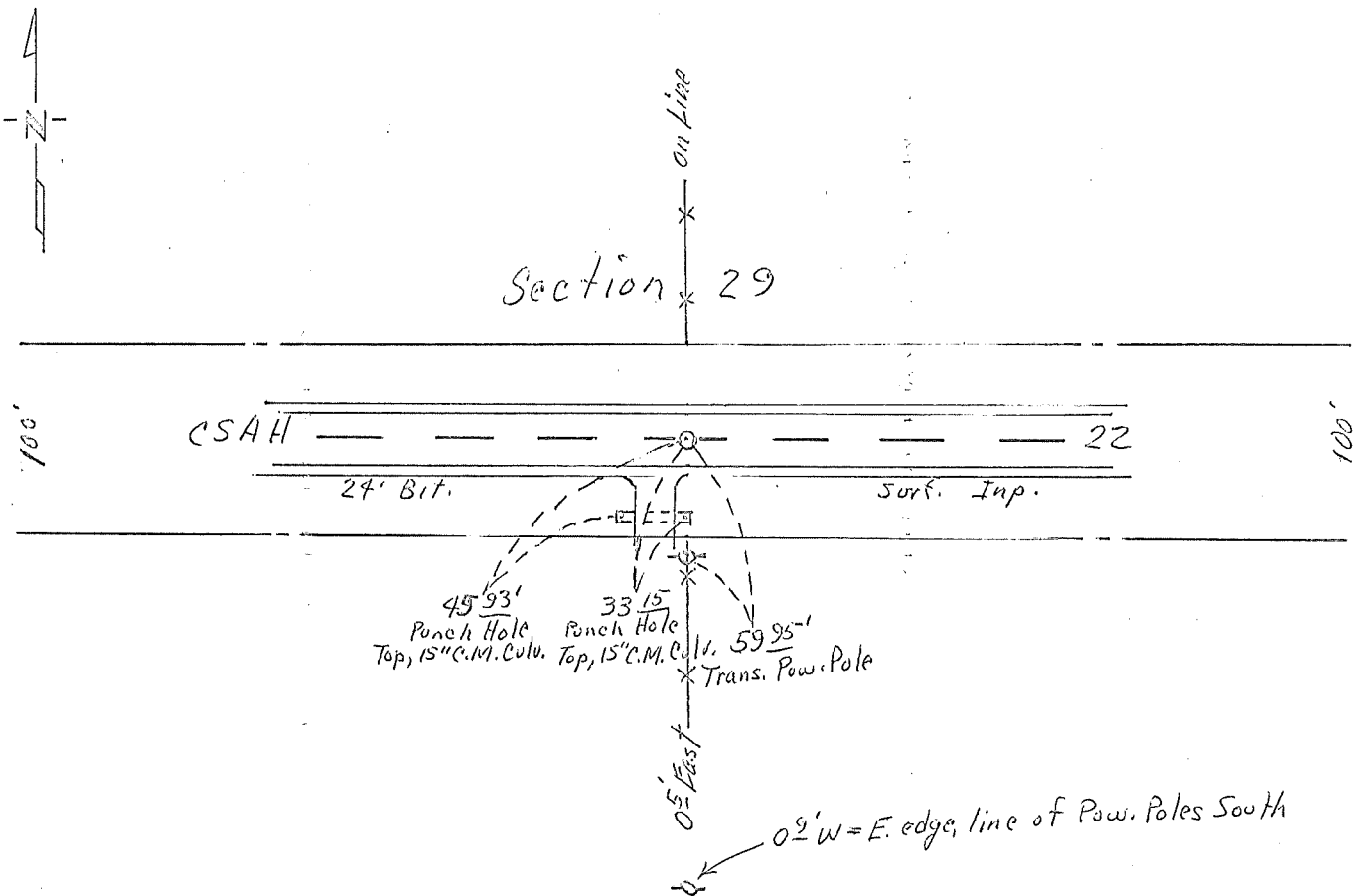
CERTIFICATE OF LOCATION OF GOVERNMENT CORNER

Center Corner of Section 29, Township 102N, Range 32W, 5th P.M.
 STATE OF MINNESOTA, County of Martin

At the corner location shown on the sketch:

- On June 7, 1978 found a 3/4" x 24" Steel Rod, 12" Deep
DATE
- left monument as found, lowered monument, removed monument (explain)
- On Sept. 18, 1979 placed a R.R. Spike over, Surface - Removed
DATE
- Sept. 13, 2005 5/8" x 12" IR w/ Alum. Cap Surface.

SKETCH OF REFERENCE TIES



Statement of evidence relative to this corner location is on back of page. (over)

I hereby certify that this document and the data contained herein was prepared by me or under my direct supervision.

SIGNATURE DATE

Registration No. 10,000

- Land Surveyor, Professional Engineer
- County Surveyor, County Engineer

OFFICE OF THE COUNTY RECORDER

County of _____

I hereby certify that this document was filed in the Co. Recorders office at _____ .M. on the _____ day of _____ A.D., 19 ____

County Recorder _____

By _____, Deputy

DOCUMENT NO. _____

Statement of Evidence:

On November 20, 1962, Dug at this location, 8' wide, 30' Long and 3' deep. Couldn't find a thing. Placed 1" x 2" hub, 4" deep, in line with fences North and South and in a straight line with the East and West $\frac{1}{4}$ corners. On May 10, 1965, placed a $\frac{3}{4}$ " x 24" Steel Rod, in place of 1" x 2" Hub.

Martin County Hwy. Dept.
by J. H. B.