

CERTIFICATE OF LOCATION OF GOVERNMENT CORNER

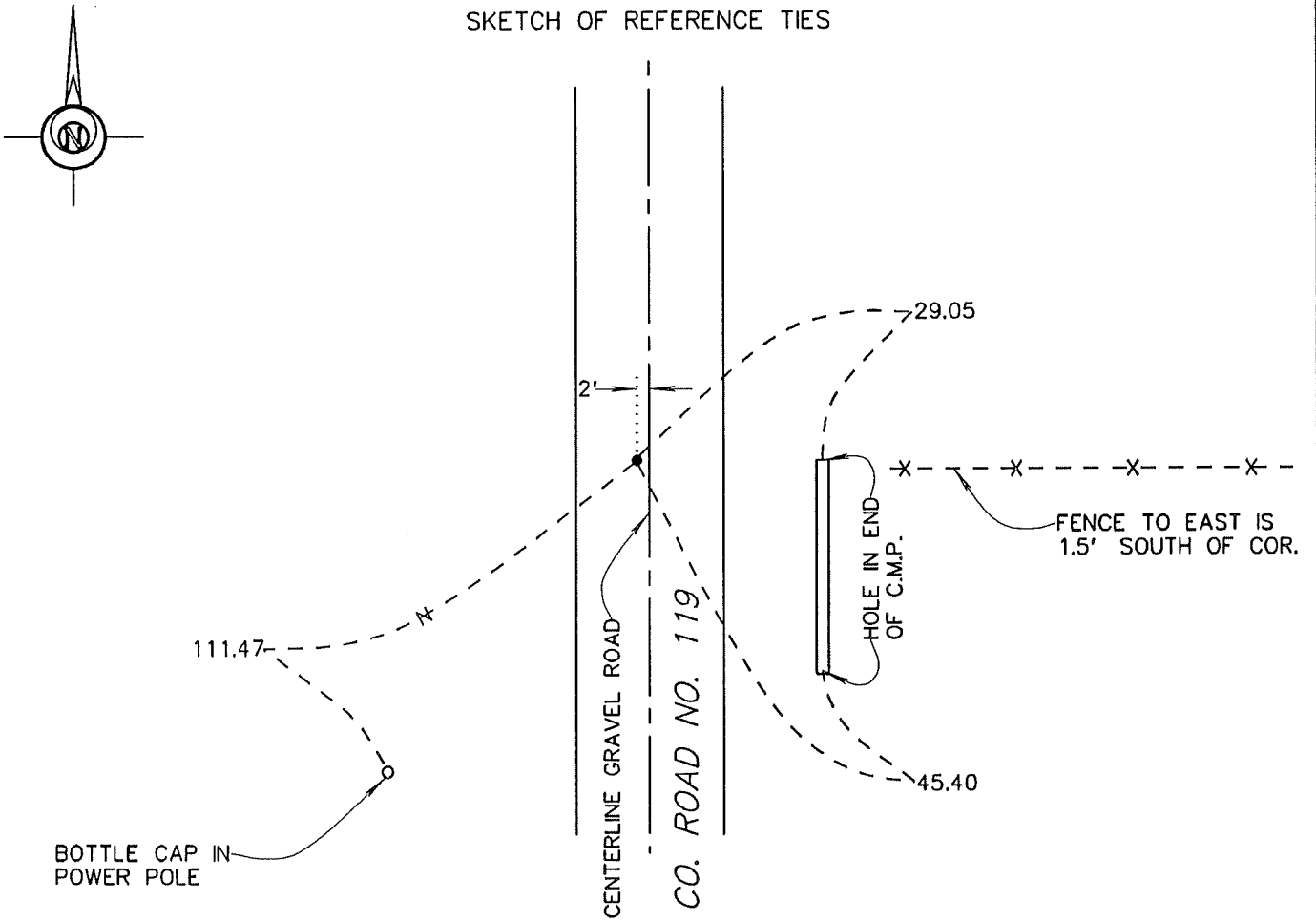
SOUTHEAST Corner of Section 29, Township 102 N., Range 32 W., 5TH P.M.

STATE OF MINNESOTA, County of MARTIN

At the corner location shown on the sketch:

- On 7-10-94 found a STONE WITH "+" (16" DEEP).
DATE
- left monument as found, lowered monument, removed monument (explain)
- On 7-10-94 placed a DRILLED HOLE IN STONE "+" & SET 5/8" X 24" IRON MONUMENT
DATE
WITH AN ALUMINUM CAP (4" DEEP).

SKETCH OF REFERENCE TIES



Statement of evidence relative to this corner location is on back of page.

I hereby certify that this document and the data contained herein was prepared by me or under my direct supervision.

John Maden SIGNATURE 5/13/96 DATE

Registration No. 13593

- Land Surveyor, Professional Engineer
- County Surveyor, County Engineer

OFFICE OF THE COUNTY RECORDER
County of MARTIN

I hereby certify that this document was filed in the Co. Recorders Office at _____ .M. on the _____ day of _____ A.D., 19____.

County Recorder _____

By _____, Deputy

DOCUMENT NO. _____

**S.E. Cor., Sec. 29, T. 102 N., R. 32 W.
(Manyaska Twp)**

Statement of Evidence

The corner was originally established during the Public Land Survey of 1857, by John O. Brunius.

The Martin County Highway Dept. Tie Records indicate the corner was a stone "+" (18" deep), with a 3/4" iron pipe over stone (4" deep). Tie - 33.0 E = N. & D. in C.F.P.

On July 10, 1994, I found a stone "+" (16" deep). Drilled hole in stone and set a 5/8" x 30" iron rod with alum. cap over stone (4" deep)

The History shown was obtained from the Martin County Highway Dept. Tie Records and existing Certificates of Location, only. Further History information may be obtained from the Martin County Recorder.