

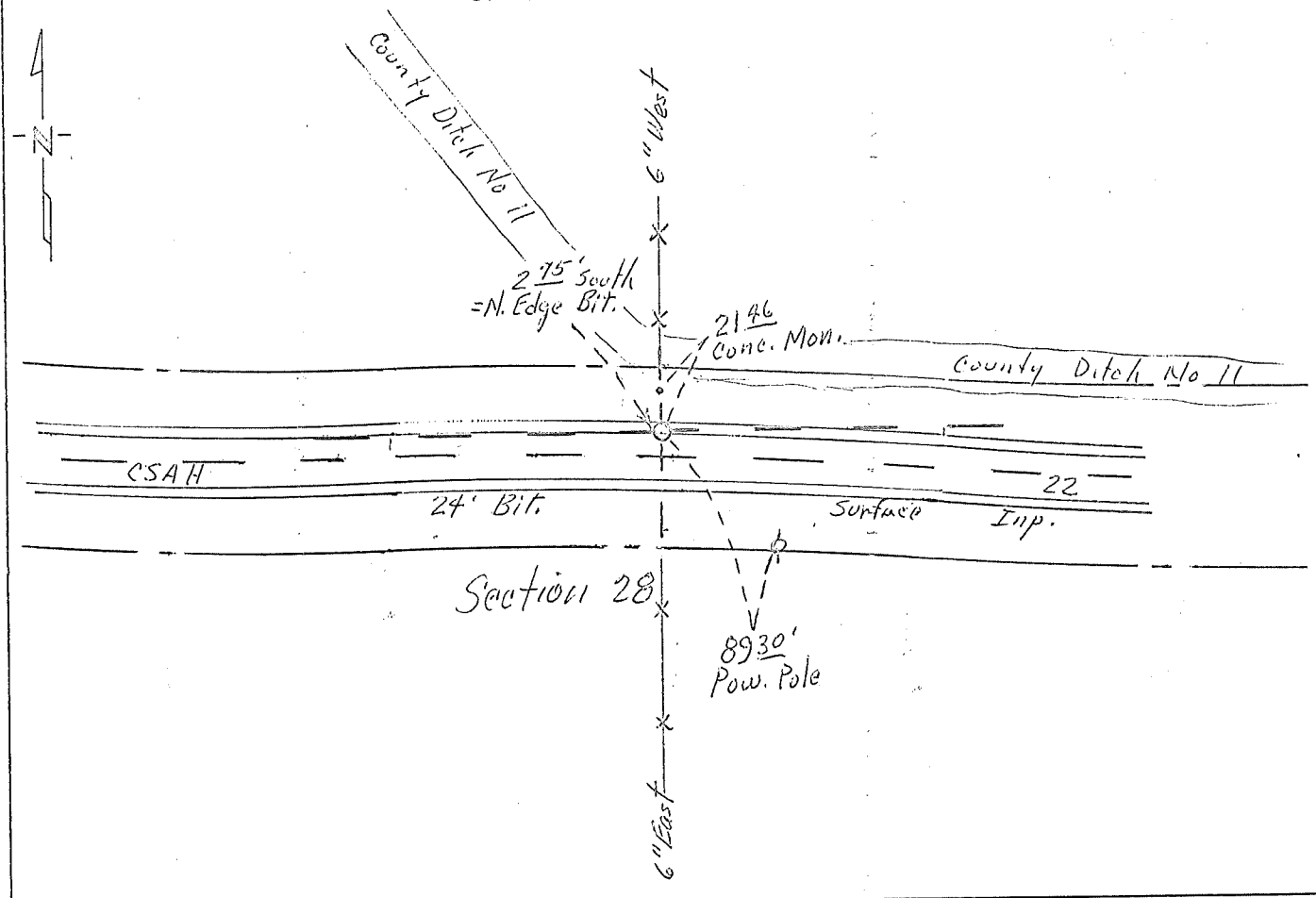
# CERTIFICATE OF LOCATION OF GOVERNMENT CORNER

Center Corner of Section 28, Township 102 N., Range 32 W., 5<sup>th</sup> P.M.  
 STATE OF MINNESOTA, County of Martin

At the corner location shown on the sketch:

- On Sept. 16, 1979 found a Concrete Monument with Steel Center,  
DATE 14" Deep
- left monument as found,  lowered monument,  removed monument (explain)
- On Sept. 18, 1979 placed a R.R. Spike over, 4" Deep - Removed  
DATE Sept. 12, 2005 5/8" x 24" IR w/ Alum. Cap.

## SKETCH OF REFERENCE TIES



Statement of evidence relative to this corner location is on back of page. (over)

I hereby certify that this document and the data contained herein was prepared by me or under my direct supervision.

\_\_\_\_\_  
SIGNATURE DATE

Registration No. 10,000

Land Surveyor,  Professional Engineer  
 County Surveyor,  County Engineer

OFFICE OF THE COUNTY RECORDER

County of \_\_\_\_\_

I hereby certify that this document was filed in the Co. Recorders office at \_\_\_\_\_ .M. on the \_\_\_\_\_ day of \_\_\_\_\_ A.D., 19 \_\_\_\_\_

County Recorder \_\_\_\_\_

By \_\_\_\_\_, Deputy

DOCUMENT NO. \_\_\_\_\_

Statement of Evidence:

On November 20, 1962, Dug 8' wide, 30' long and 5' Deep, at this location, Couldn't find a thing. Placed a 1" x 2" Hub, 4" Deep, in line with fences North and South and in a straight line with the East and West  $\frac{1}{4}$  Corners.

Corner was lost during Construction, summer of 1964. On June 7, 1978, Placed a concrete monument with steel center, at this point, using existing ties and again, the East and West  $\frac{1}{4}$  corners.

Martin County Hwy. Dept.  
By J.A.B.