

# CERTIFICATE OF LOCATION OF GOVERNMENT CORNER

MANYASKA

SOUTHEAST Corner of Section 28, Township T102 N, Range R32W, 5th P.M.

STATE OF MINNESOTA, County of MARTIN

At the corner location shown on the sketch:

On 5-15-00 found a 3/4" SQUARE IRON ROD (4" DEEP)  
DATE

left monument as found,  lowered monument,  removed monument (explain)

On 5-15-00 Placed a 5/8" X 19" IRON ROD W/ALUM. CAP ( 4" DEEP )  
DATE

## SKETCH OF REFERENCE TIES

6.5 NORTH = REMAINS OF  
FENCE EAST

X X X X X X X X X X X X

Statement of evidence relative to this corner location is on back of page.

I hereby certify that this document and the data contained herein was prepared by me or under my direct supervision.

\_\_\_\_\_  
SIGNATURE DATE

Registration No. \_\_\_\_\_

- Land Surveyor,  Professional Engineer
- County Surveyor,  County Engineer

OFFICE OF THE REGISTER OF DEEDS  
County of MARTIN

I hereby certify that this document was filed in the Reg. of Deeds office at \_\_\_\_\_M. on the

\_\_\_\_\_day of \_\_\_\_\_A.D., 19\_\_\_\_

Register of Deeds \_\_\_\_\_

By \_\_\_\_\_, Deputy

DOCUMENT NO. \_\_\_\_\_

# CERTIFICATE OF LOCATION OF GOVERNMENT CORNER

SouthEast Corner of Section 28, Township 102N, Range 32W, 5 P.M.

STATE OF MINNESOTA, County of Martin

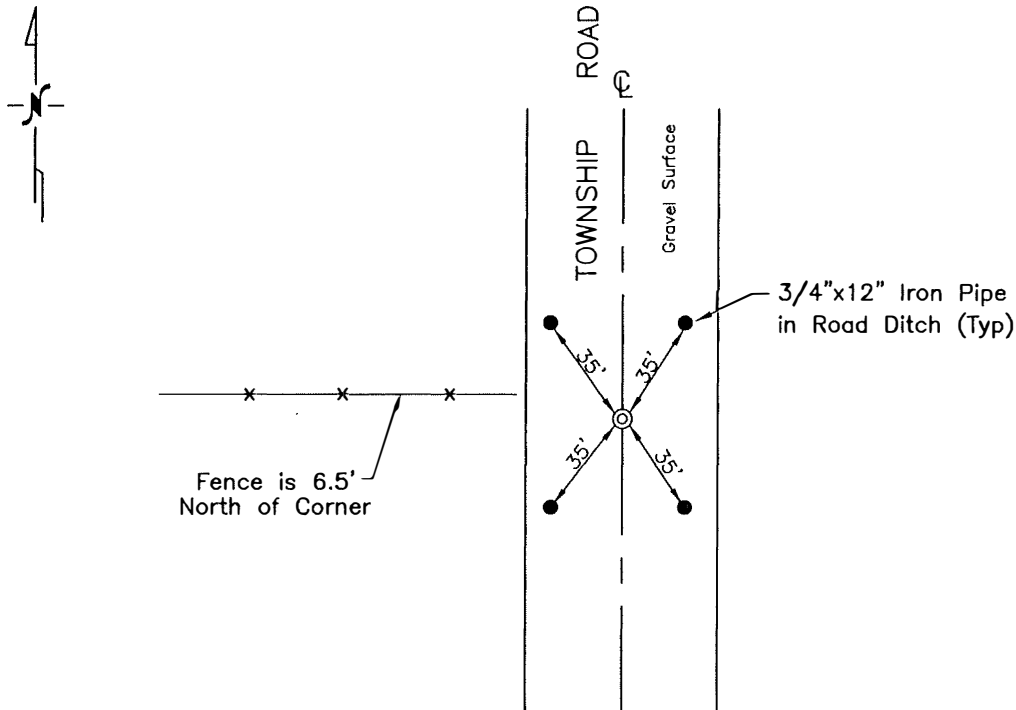
At the corner location shown on the sketch:

On Nov. 1996 found a 3/4" Square Shaft (4" Deep)  
DATE

left monument as found,  lowered monument,  removed monument (explain)

On \_\_\_\_\_ placed a \_\_\_\_\_  
DATE

## SKETCH OF REFERENCE TIES



Statement of evidence relative to this corner is on the back of page.

I hereby certify that this document and the data contained herein was prepared by me or under my direct supervision.

\_\_\_\_\_  
SIGNATURE DATE

Registration No. 13309

- Land Surveyor,  Professional Engineer
- County Surveyor,  County Engineer

OFFICE OF THE COUNTY RECORDER  
County of \_\_\_\_\_

I hereby certify that this document was filed in the Co. Recorders office at \_\_\_\_\_ P.M. on the \_\_\_\_\_ day of \_\_\_\_\_ A.D., 19\_\_

County Recorder \_\_\_\_\_

By \_\_\_\_\_, Deputy

DOCUMENT NO. \_\_\_\_\_