

# CERTIFICATE OF LOCATION OF GOVERNMENT CORNER

Center Corner of Section 27, Township 102 N., Range 32 W., 5th P.M.

STATE OF MINNESOTA, County of Martin

At the corner location shown on the sketch:

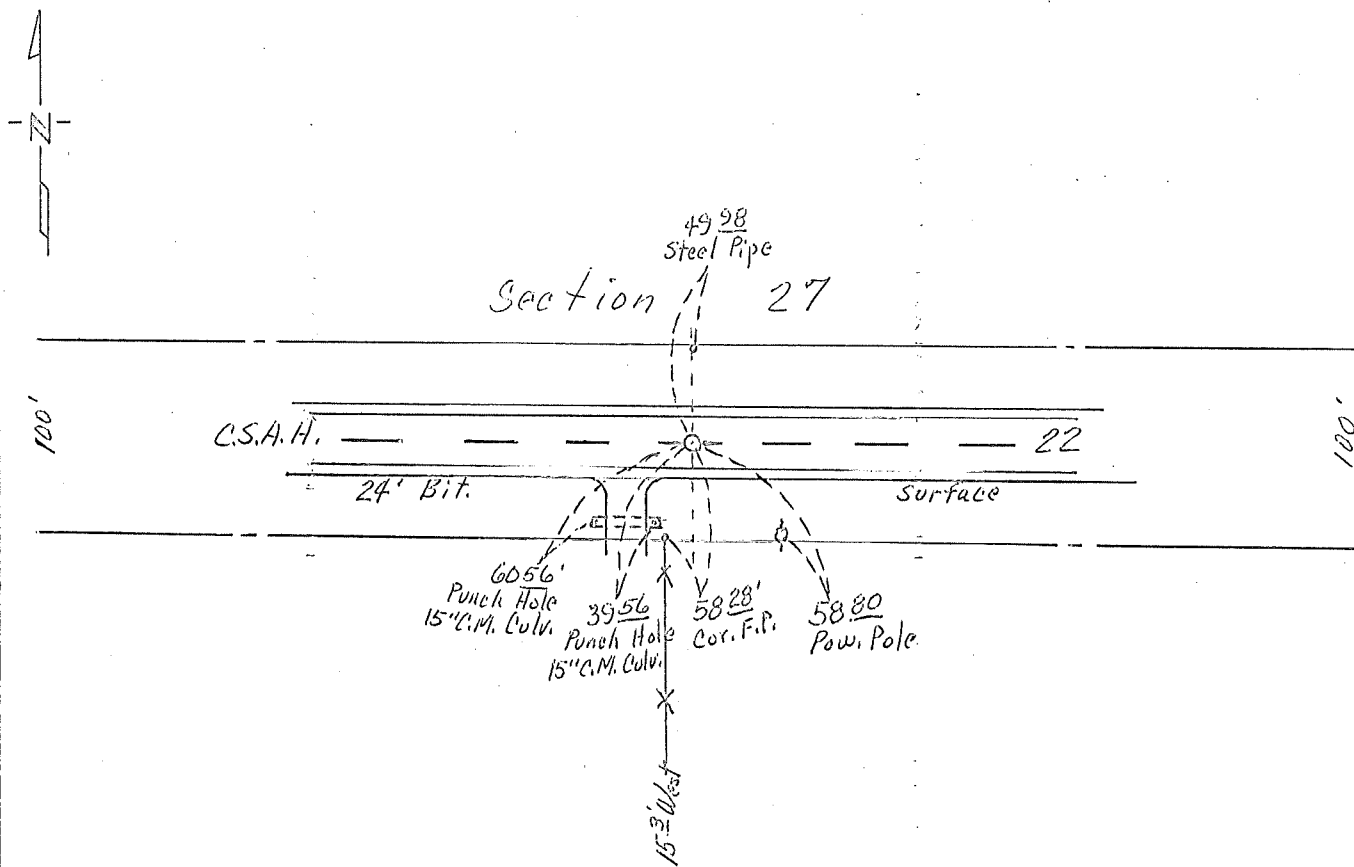
On June 12, 1978 found a 1/2" Pipe with 3" Plastic Cap, now 11" Deep.  
DATE

left monument as found,  lowered monument,  removed monument (explain)

On Sept. 18, 1979 placed a R.R. Spike over, Surface. Removed  
DATE

Sept. 12, 2005 5/8" IR w/ Alum. Cap.

## SKETCH OF REFERENCE TIES



Statement of evidence relative to this corner location is on back of page.

I hereby certify that this document and the data contained herein was prepared by me or under my direct supervision.

\_\_\_\_\_  
SIGNATURE DATE

Registration No. 10,000

- Land Surveyor,  Professional Engineer  
 County Surveyor,  County Engineer

## OFFICE OF THE COUNTY RECORDER

County of \_\_\_\_\_

I hereby certify that this document was filed in the Co. Recorders office at \_\_\_\_\_ .M. on the \_\_\_\_\_ day of \_\_\_\_\_ A.D., 19 \_\_\_\_\_

County Recorder \_\_\_\_\_

By \_\_\_\_\_, Deputy

DOCUMENT NO. \_\_\_\_\_