

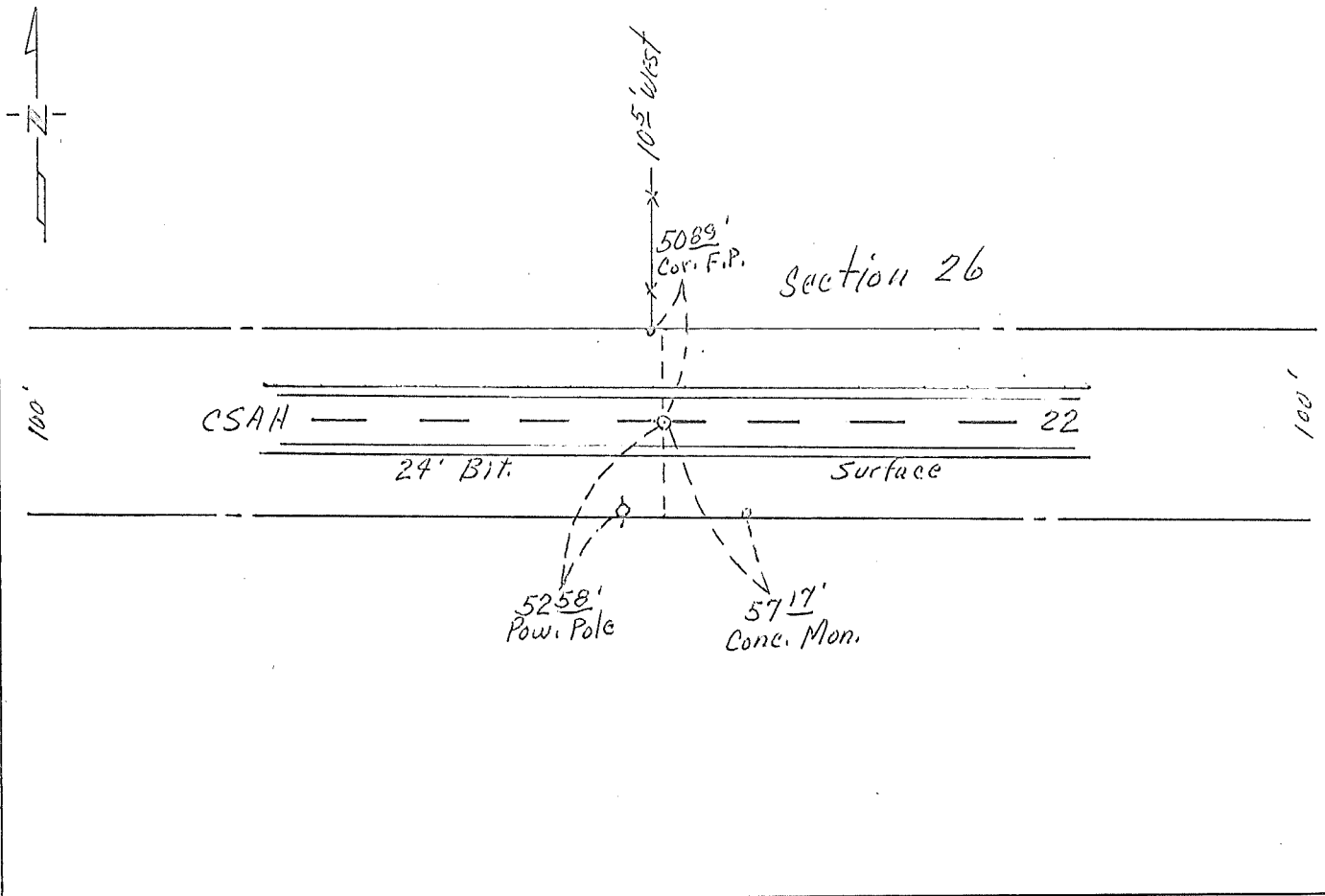
CERTIFICATE OF LOCATION OF GOVERNMENT CORNER

Center Corner of Section 26, Township 102 N., Range 32 W., 5th P.M.
 STATE OF MINNESOTA, County of Martin

At the corner location shown on the sketch:

- On Nov. 20, 1962 found a Stone with a "T", 10" Deep
DATE Stone lost During Construction, 1964
 left monument as found, lowered monument, removed monument (explain)
- On June 8, 1965 placed a 3/4" Steel Rod, now 12" Deep, using existing Ties.
DATE On Sept. 18, 1979, Placed R.R. Spike, Surface - Removed
Sept. 13, 2005, 5/8" IR w/ Alum. Cap. Surface.

SKETCH OF REFERENCE TIES



Statement of evidence relative to this corner location is on back of page.

I hereby certify that this document and the data contained herein was prepared by me or under my direct supervision.

SIGNATURE DATE

Registration No. 10,000
 Land Surveyor, Professional Engineer
 County Surveyor, County Engineer

OFFICE OF THE COUNTY RECORDER

County of _____

I hereby certify that this document was filed in the Co. Recorders office at _____ .M. on the _____ day of _____ A.D., 19 _____

County Recorder _____

By _____, Deputy

DOCUMENT NO. _____