

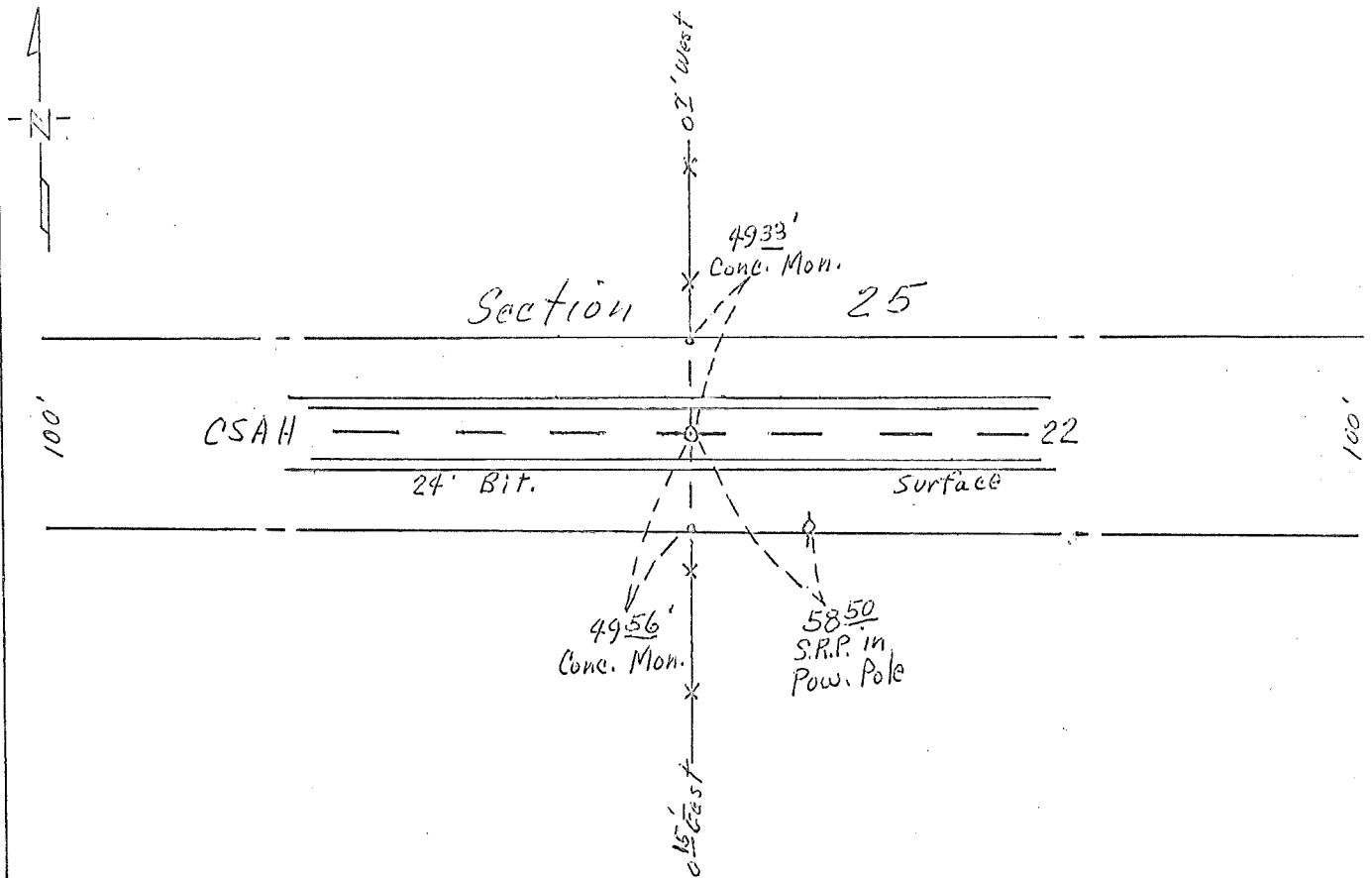
CERTIFICATE OF LOCATION OF GOVERNMENT CORNER

Center Corner of Section 25, Township 102 N., Range 32 W., 5th P.M.
 STATE OF MINNESOTA, County of Martin

At the corner location shown on the sketch:

- On May 1, 1963 found a Stone with a "T" over Crickery, now 22" Deep.
DATE On June 8, 1965, Placed a 3/4" Steel Rod over, now 11" Deep.
 left monument as found, lowered monument, removed monument (explain)
- On Sept. 18, 1979 placed a R.R. Spike over, surface. -Removed
DATE Sept. 12, 2005 5/8" x 1/2" I.R. w/ Alum. CAP. Surface

SKETCH OF REFERENCE TIES



Statement of evidence relative to this corner location is on back of page.

I hereby certify that this document and the data contained herein was prepared by me or under my direct supervision.

_____ SIGNATURE _____ DATE _____
 Registration No. 10,000
 Land Surveyor, Professional Engineer
 County Surveyor, County Engineer

OFFICE OF THE COUNTY RECORDER

County of _____

I hereby certify that this document was filed in the Co. Recorders office at _____ M. on the _____ day of _____ A.D., 19 _____

County Recorder _____

By _____, Deputy

DOCUMENT NO. _____