

CERTIFICATE OF LOCATION OF GOVERNMENT CORNER

Manyaska

East 1/4 Corner of Section 24, Township T102N, Range R32W, 5th P.M.

STATE OF MINNESOTA, County of MARTIN

At the corner location shown on the sketch:

On 7-13-99 found a 3/4" I.R. (8" Deep) In Bit. Paving

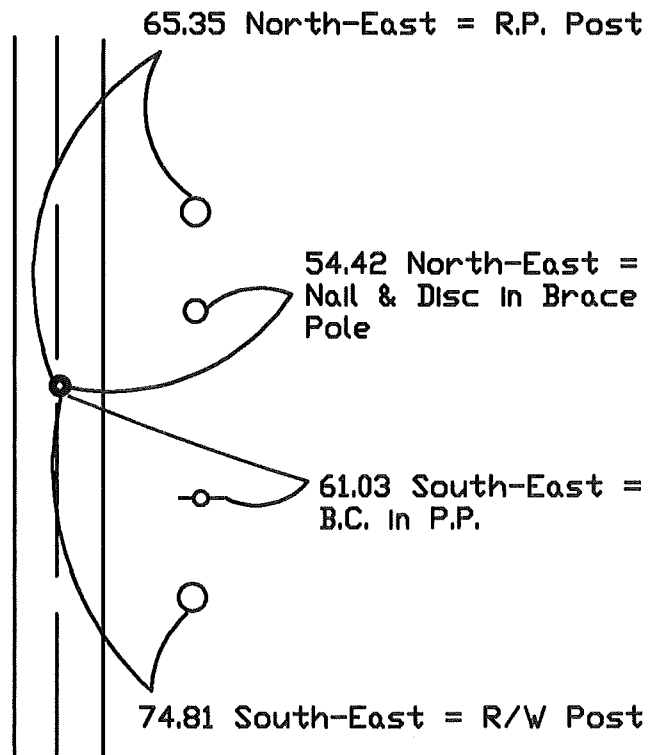
DATE

left monument as found, lowered monument, removed monument (explain)

On 7-13-99 Placed a 5/8" X 24" I.R. W/Alum. Cap (surface)

DATE

SKETCH OF REFERENCE TIES



Statement of evidence relative to this corner location is on back of page.

I hereby certify that this document and the data contained herein was prepared by me or under my direct supervision.

SIGNATURE DATE

Registration No. _____

- Land Surveyor, Professional Engineer
- County Surveyor, County Engineer

OFFICE OF THE REGISTER OF DEEDS
County of MARTIN

I hereby certify that this document was filed in the Reg. of Deeds office at _____ M. on the

_____ day of _____ A.D., 19__

Register of Deeds _____

By _____, Deputy

DOCUMENT NO. _____

Statement of Evidence:

The corner was originally established during the public land survey which was completed in 1857.

A survey made by George E. Sawyer, dated August, 1900, indicates he identified the corner from a previous survey in Book C, page 63.

A survey made by George Sawyer, dated June, 1918, in County Surveyor's Book E, page 127, indicates he identified the corner and raised with crockery and stone.

The Martin County Highway Dept., in 1947, described the corner as a concrete block 6" down with the remaining ties as follows:

65.25 N.E. = concrete monument

74.95 S.E. = concrete monument

36.0 S.W. = top of 12" C.M.P.

On 12/5/80, I found a 3/4" steel rod (1" deep).