

# CERTIFICATE OF LOCATION OF GOVERNMENT CORNER

MANYASKA

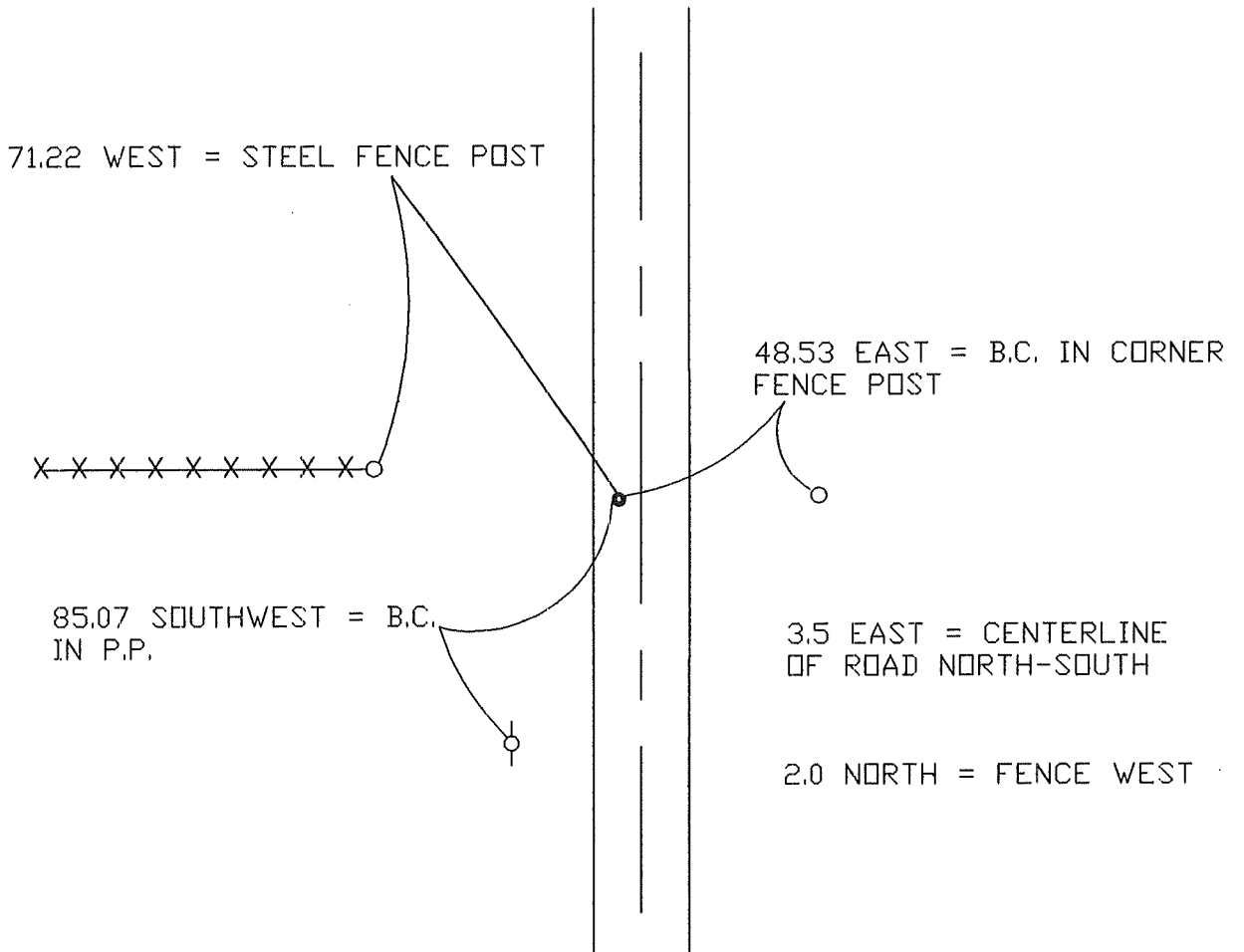
SOUTHEAST Corner of Section 23, Township T102-N, Range R32W, 5th P.M.

STATE OF MINNESOTA, County of MARTIN

At the corner location shown on the sketch:

- On 3-24-00 found a 3/4" SQUARE IRON ROD ( 12" DEEP )  
DATE
- left monument as found,  lowered monument,  removed monument (explain)
- On 3-24-00 Placed a 5/8" X 24" IRON ROD W/ALUM. CAP (4" DEEP )  
DATE

## SKETCH OF REFERENCE TIES



Statement of evidence relative to this corner location is on back of page.

I hereby certify that this document and the data contained herein was prepared by me or under my direct supervision.

\_\_\_\_\_  
SIGNATURE DATE

Registration No. \_\_\_\_\_

- Land Surveyor,  Professional Engineer
- County Surveyor,  County Engineer

OFFICE OF THE REGISTER OF DEEDS  
County of MARTIN

I hereby certify that this document was filed in the Reg. of Deeds office at \_\_\_\_\_, M. on the

\_\_\_\_\_ day of \_\_\_\_\_ A.D., 19\_\_\_\_  
Register of Deeds \_\_\_\_\_

By \_\_\_\_\_, Deputy  
DOCUMENT NO. \_\_\_\_\_

Statement of Evidence:

The corner was originally established during the public land survey which was completed in 1857.

A survey made by C.J. Montgomery, dated April, 1891, in County Surveyor's Book B, page 68, indicates he set a willow stake with mound and pits.

A survey made by George E. Sawyer, dated August, 1895, in County Surveyor's Book C, page 61, indicates he found the stake set in the previous survey.

A survey made by George Sawyer, dated August, 1900, in County Surveyor's Book D, page 22, indicates he set a 8" x 7" x 6" limestone with "+".

The Martin County Highway Dept., in April, 1954, described the corner as a stone "+" (28" deep), 1" x 2" hub over stone, 3/4" steel rod over stone "+".

On 12/5/80, I found a 3/4" steel rod (8" deep).