

CERTIFICATE OF LOCATION OF GOVERNMENT CORNER

East Quarter _____ Corner of Section 22, Township 102N Range 32W, 5th P.M.

STATE OF MINNESOTA, County of Martin

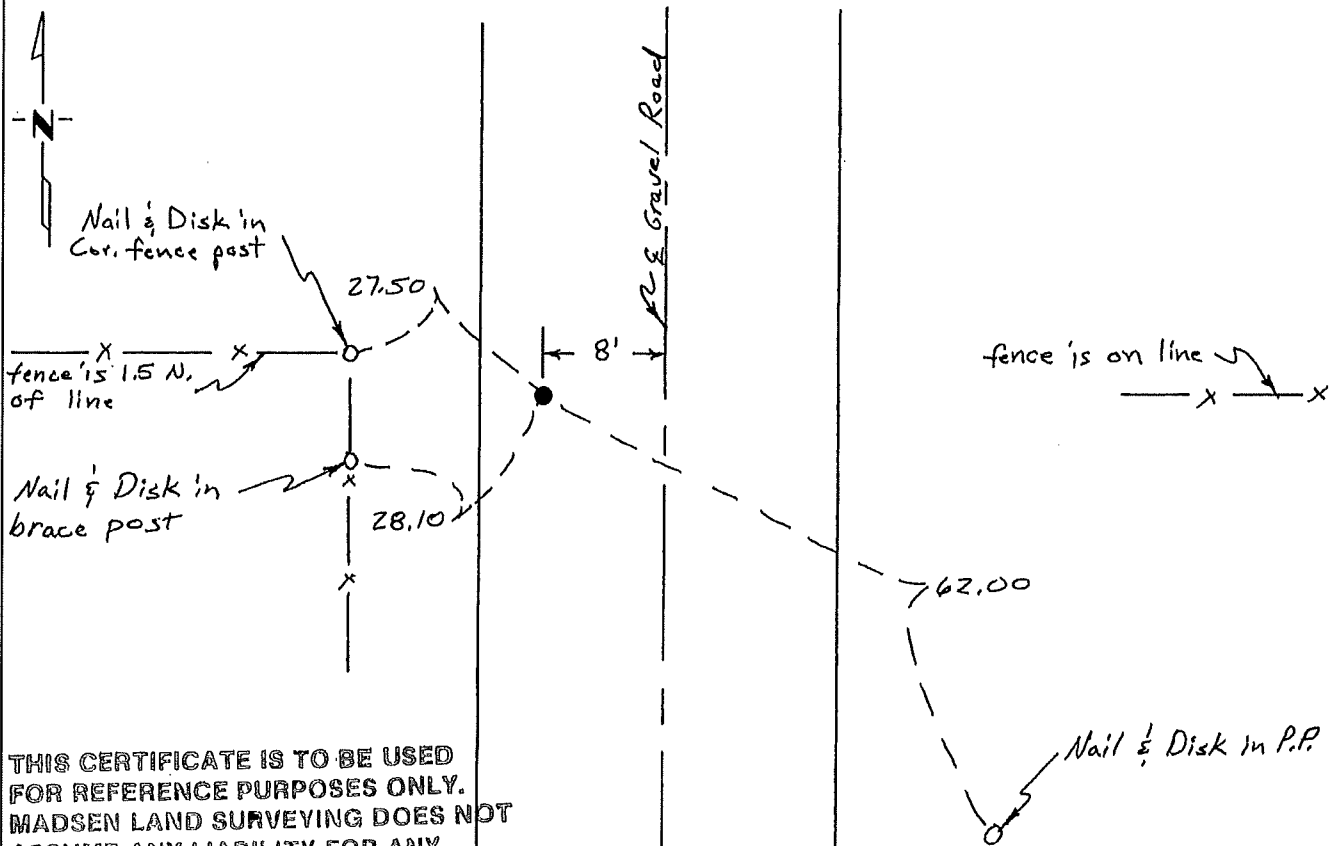
At the corner location shown on the sketch:

On 5/11/84 found a 3/4" steel rod (4" deep) over a stone "+" (19" deep)
DATE

left monument as found, lowered monument, removed monument (explain)

On _____ placed a _____
DATE

SKETCH OF REFERENCE TIES



THIS CERTIFICATE IS TO BE USED FOR REFERENCE PURPOSES ONLY. MADSEN LAND SURVEYING DOES NOT ASSUME ANY LIABILITY FOR ANY INACCURACIES CONTAINED HEREIN.

Statement of evidence relative to this corner location is on back of page.

I hereby certify that this document and the data contained herein was prepared by me or under my direct supervision.

John Madsen SIGNATURE 7-6-84 DATE

Registration No. 13593

Land Surveyor, Professional Engineer

County Surveyor, County Engineer

OFFICE OF THE COUNTY RECORDER

County of Martin

I hereby certify that this document was filed in the Co. Recorders office at _____ .M. on the _____ day of _____ A.D., 19 _____

County Recorder _____

By _____, Deputy

DOCUMENT NO. _____

Statement of Evidence:

A witness monument was set 2.00 chains West of the corner during the Public Land Survey, which was completed in Manyaska Township in 1857.

In April of 1891, as recorded in County Surveyor's Book B, page 68, County Surveyor, O.T. Montgomery, identified the witness monument as stake in mound.

In May of 1904, as recorded in County Surveyor's Book D, page 109, County Surveyor, George^aSawyer, identified the witness monument as rotten stake (B-69), deposited crockery (26" deep) and set 9" x 8" x 6" stone with cross at stake. Established $\frac{1}{4}$ corner by iron rod 40" x $\frac{5}{8}$ " with nut on top (surface); imbedded 3 stones in mud.

In August of 1938, as recorded in County Surveyor's Book G, page 220, County Surveyor, George Sawyer, identified the corner (D-109) as small round hole but stones and iron removed (probably intentionally). Renewed with crockery (48" deep) and 8" x 7" x 6" stone with "+" (3" deep).

The Martin County Highway Department identified the corner as stone "+" (20" deep), $\frac{3}{4}$ " steel rod over stone (4" deep), remaining ties being; 27.1 W=corner fence post, 61.6 S.E.=power pole, fence to West is 18" North of stone, fence to East is on line.

On 5/11/84, I found a $\frac{3}{4}$ " steel rod (4" deep) over a stone (19" deep).