

CERTIFICATE OF LOCATION OF GOVERNMENT CORNER

Manyaska

East 1/4 Corner SEC. 12 , Township T102N , Range R32W , 5th P.M.

STATE OF MINNESOTA, County of MARTIN

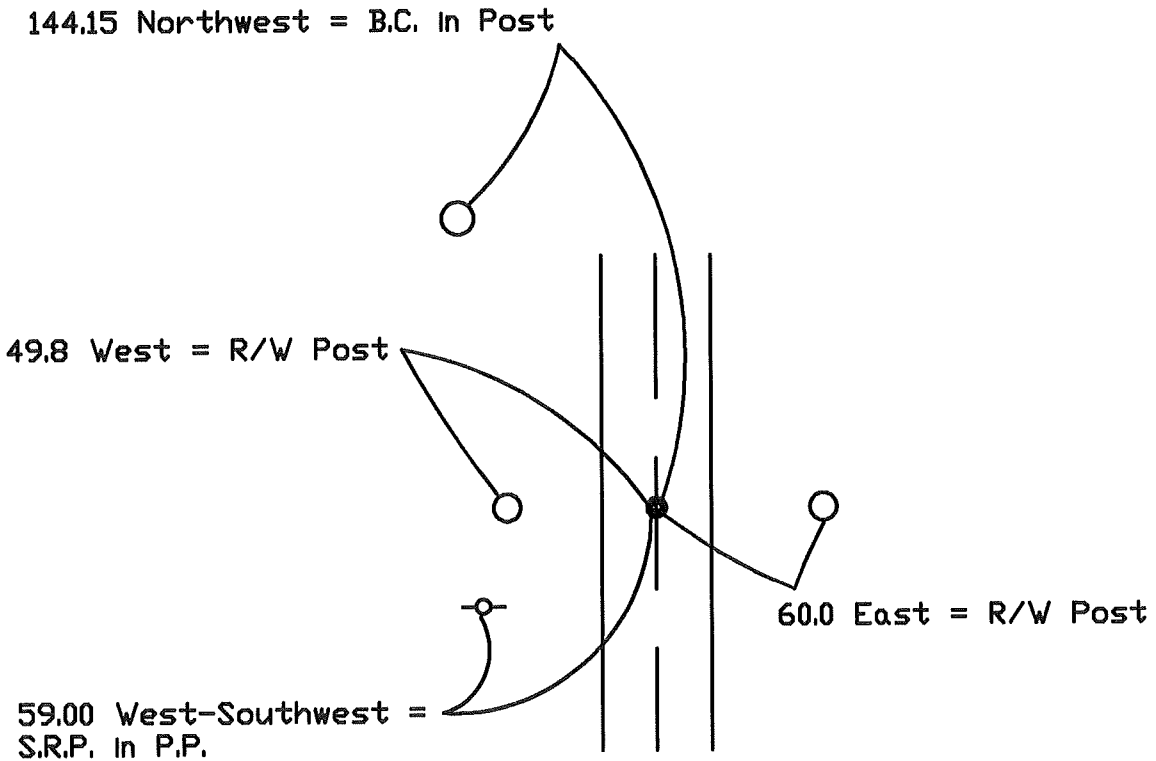
At the corner location shown on the sketch:

- On 7-16-98 found a 5/8" rod (4" Deep) in Bit. Paving
DATE

- left monument as found, lowered monument, removed monument (explain)

- On _____ Placed a _____
DATE

SKETCH OF REFERENCE TIES



Statement of evidence relative to this corner location is on back of page.

I hereby certify that this document and the data contained herein was prepared by me or under my direct supervision.

SIGNATURE DATE

Registration No. _____

- Land Surveyor, Professional Engineer
- County Surveyor, County Engineer

OFFICE OF THE REGISTER OF DEEDS
 County of MARTIN

I hereby certify that this document was filed in the Reg. of Deeds office at _____ M. on the

_____ day of _____ A.D., 19____

Register of Deeds _____

By _____, Deputy

DOCUMENT NO. _____

CERTIFICATE OF LOCATION OF GOVERNMENT CORNER

Manyaska

East 1/4 SEC. 12, Township T102N, Range R32W, 5th P.M.

STATE OF MINNESOTA, County of MARTIN

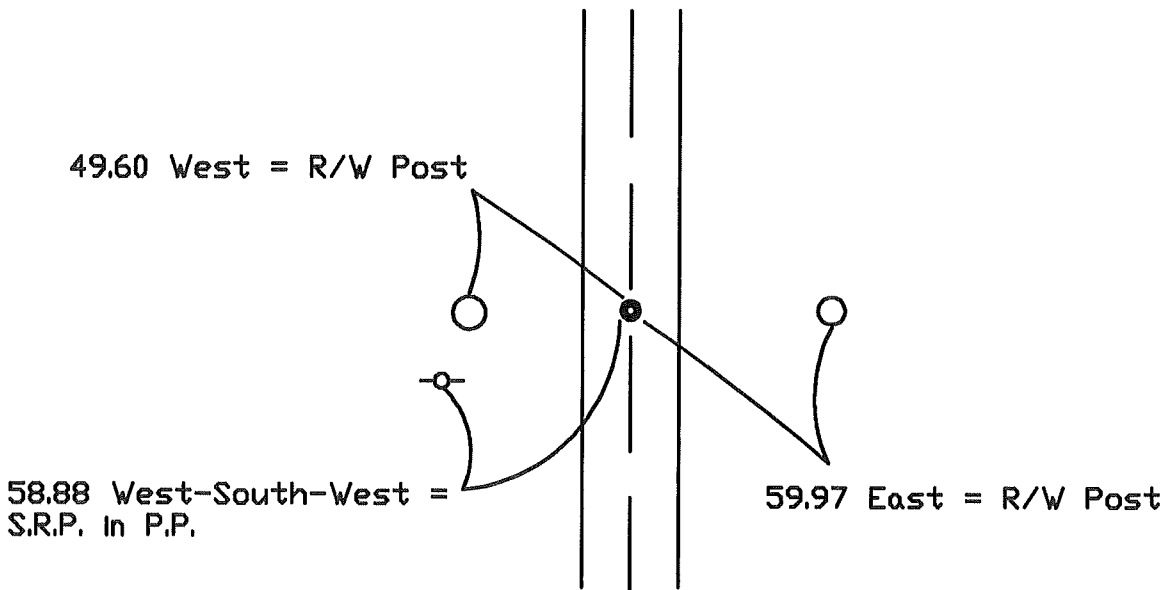
At the corner location shown on the sketch:

On 7-12-99 found a 3/4" I.R. (7" Deep)
DATE

left monument as found, lowered monument, removed monument (explain)

On 7-12-99 Placed a 5/8" X 6" I.R. w/Alum. Cap over I.R. (surface)
DATE

SKETCH OF REFERENCE TIES



Statement of evidence relative to this corner location is on back of page.

I hereby certify that this document and the data contained herein was prepared by me or under my direct supervision.

SIGNATURE DATE

Registration No. _____

- Land Surveyor, Professional Engineer
- County Surveyor, County Engineer

OFFICE OF THE REGISTER OF DEEDS
County of MARTIN

I hereby certify that this document was filed in the Reg. of Deeds office at _____M. on the

_____day of _____A.D., 19____

Register of Deeds _____

By _____, Deputy

DOCUMENT NO. _____