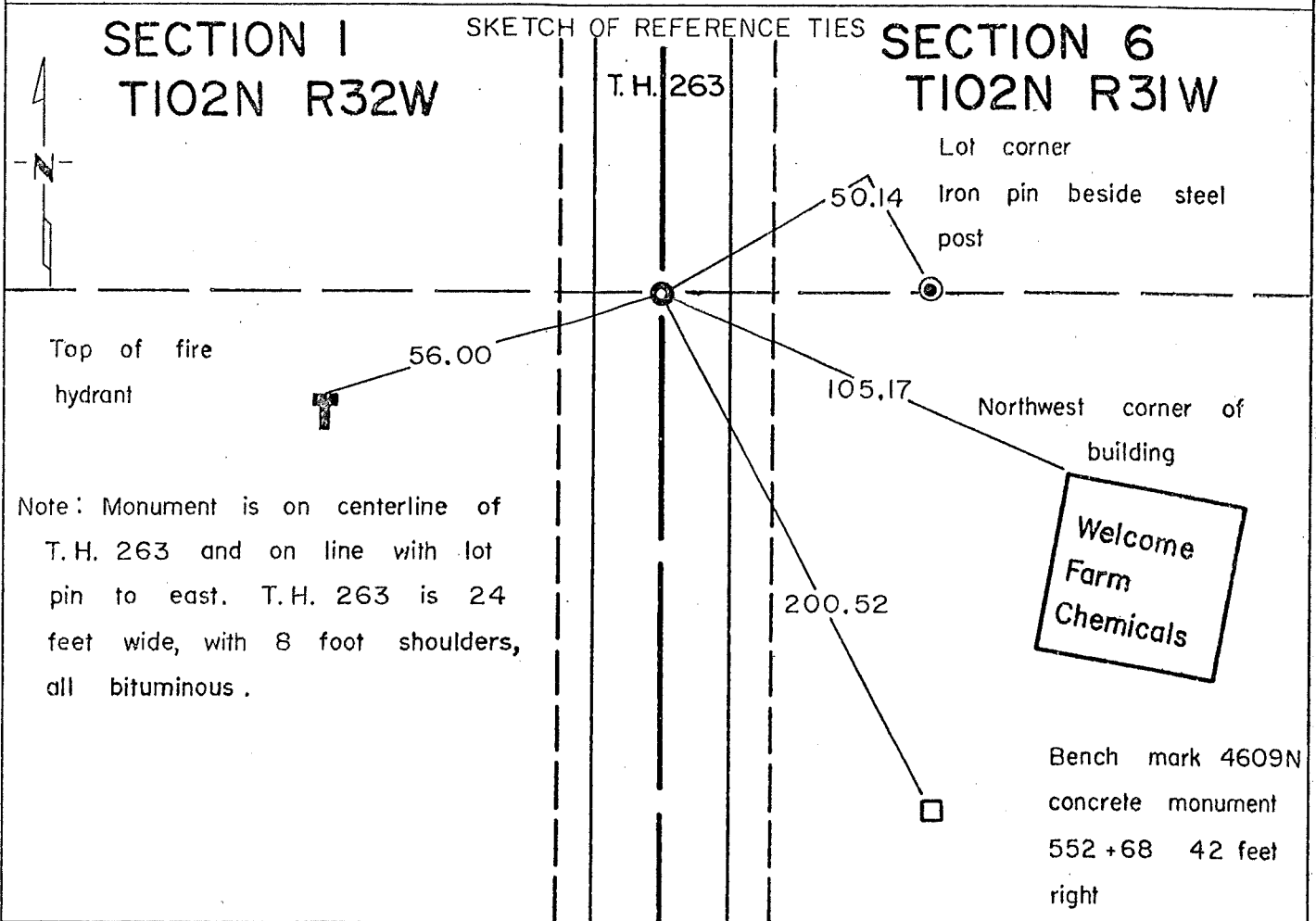


**CERTIFICATE OF LOCATION OF GOVERNMENT CORNER**  
**EAST SIXTEENTH CORNER OF**  
**NORTHEAST QUARTER** Corner of Section 1, Township 102 N, Range 32 W, 5 P.M.

STATE OF MINNESOTA, County of MARTIN

At the corner location shown on the sketch:

- On May 6, 1976 found a 3/4 inch iron bar in nest of stones, down  
DATE  
4.0 feet.  
 left monument as found,  lowered monument,  removed monument (explain)
- On Aug 3, 1976 placed a M.H.D. cast iron monument flush with a  
DATE  
3/4 inch x 24 inch iron pin below.



Note: Monument is on centerline of T.H. 263 and on line with lot pin to east. T.H. 263 is 24 feet wide, with 8 foot shoulders, all bituminous.

Bench mark 4609N  
 concrete monument  
 552+68 42 feet  
 right

Statement of evidence relative to this corner location is on back of page.

I hereby certify that this document and the data contained herein was prepared by me or under my direct supervision.

S. Ellen Lobe JAN. 19, 1982  
SIGNATURE DATE

Registration No. 11933  
 Land Surveyor,  Professional Engineer  
 County Surveyor,  County Engineer

OFFICE OF THE COUNTY RECORDER  
 County of Martin

I hereby certify that this document was filed in the Co. Recorders office at 11:00 A.M. on the 1st day of February A.D., 1982

County Recorder [Signature]  
 By \_\_\_\_\_, Deputy  
 DOCUMENT NO. 265640

Statement of Evidence: East Sixteenth Corner of Northeast Quarter, Section 1,  
Township 102N, Range 32W, 5 P.M.

- March 20, 1894 George E. Sawyer, Deputy County Surveyor, made a survey in the northwest corner of Section 6 of Rolling Green Township, notes read, west 1/16 corner to northwest 1/4 has "iron stake in grade, also inbedded stones around stake."
- May 4 & 5, 1909 George E. Sawyer, Deputy County Surveyor, made a survey in Northwest 1/4 of Section 6, identified corner to be "iron stake in stones".
- June 2, 1917 George E. Sawyer, Deputy County Surveyor, made a survey in Section 6, identified West 1/16 corner now 6 inches below surface and laid a stone on top to surface of 1 foot grade. Corner is equal distance of 1316.6 feet to land corners.
- November 18, 1919 George E. Sawyer, Deputy County Surveyor, made survey in Section 1, identified east 1/4 corner of northeast corner "iron stake in stones".
- August 3, 1976 Mn/DOT, George Koens et al, set a 3/4 inch by 24 inch iron rod 2 foot below surface with an M.H.D. cast iron monument above using reference ties previously established.

An analysis of the Statement of Evidence and the field measurements indicate that the in place location of the iron stake provides a continuous chain of perpetuation of the land corner George E. Sawyer set. I therefore accept the monument as the location of the land corner.

For additional information, including field measurements and photographs, contact the Minnesota Department of Transportation in Windom, Minnesota.