

# CERTIFICATE OF LOCATION OF GOVERNMENT CORNER

MANYASKA

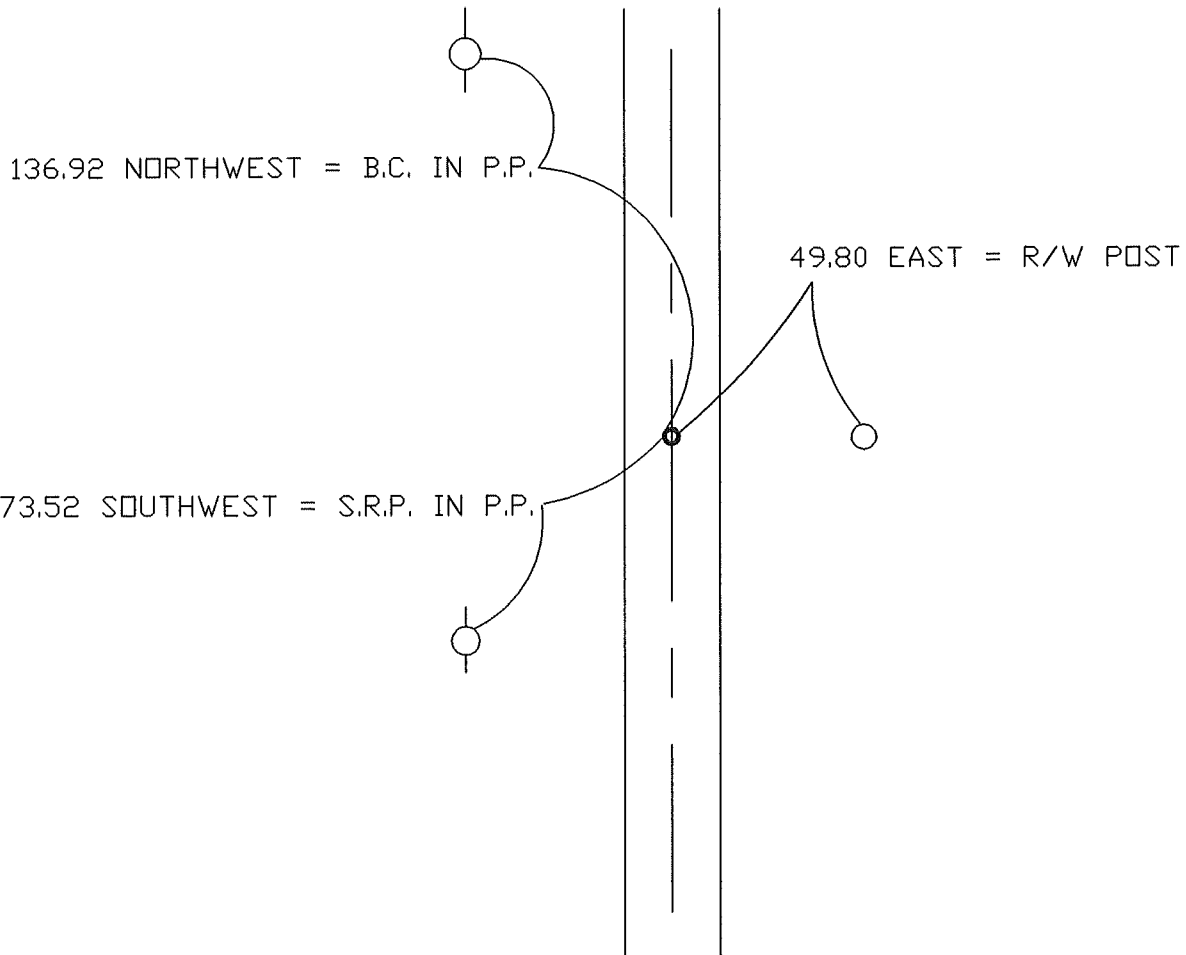
EAST 1/4 Corner of Section 1, Township T-102 N, Range R32W, 5th P.M.

STATE OF MINNESOTA, County of MARTIN

At the corner location shown on the sketch:

- On 7-12-99 found a MN.DOT MON. (4"DEEP) IN BIT, PAVING  
DATE
- left monument as found,  lowered monument,  removed monument (explain)
- On \_\_\_\_\_ Placed a \_\_\_\_\_  
DATE

## SKETCH OF REFERENCE TIES



Statement of evidence relative to this corner location is on back of page.

I hereby certify that this document and the data contained herein was prepared by me or under my direct supervision.

\_\_\_\_\_  
SIGNATURE                      DATE

Registration No. \_\_\_\_\_

- Land Surveyor,                       Professional Engineer
- County Surveyor,                       County Engineer

OFFICE OF THE REGISTER OF DEEDS  
 County of MARTIN

I hereby certify that this document was filled in the Reg. of Deeds office at \_\_\_\_\_M. on the

\_\_\_\_\_ day of \_\_\_\_\_ A.D., 19\_\_\_\_

Register of Deeds \_\_\_\_\_

By \_\_\_\_\_, Deputy

DOCUMENT NO. \_\_\_\_\_

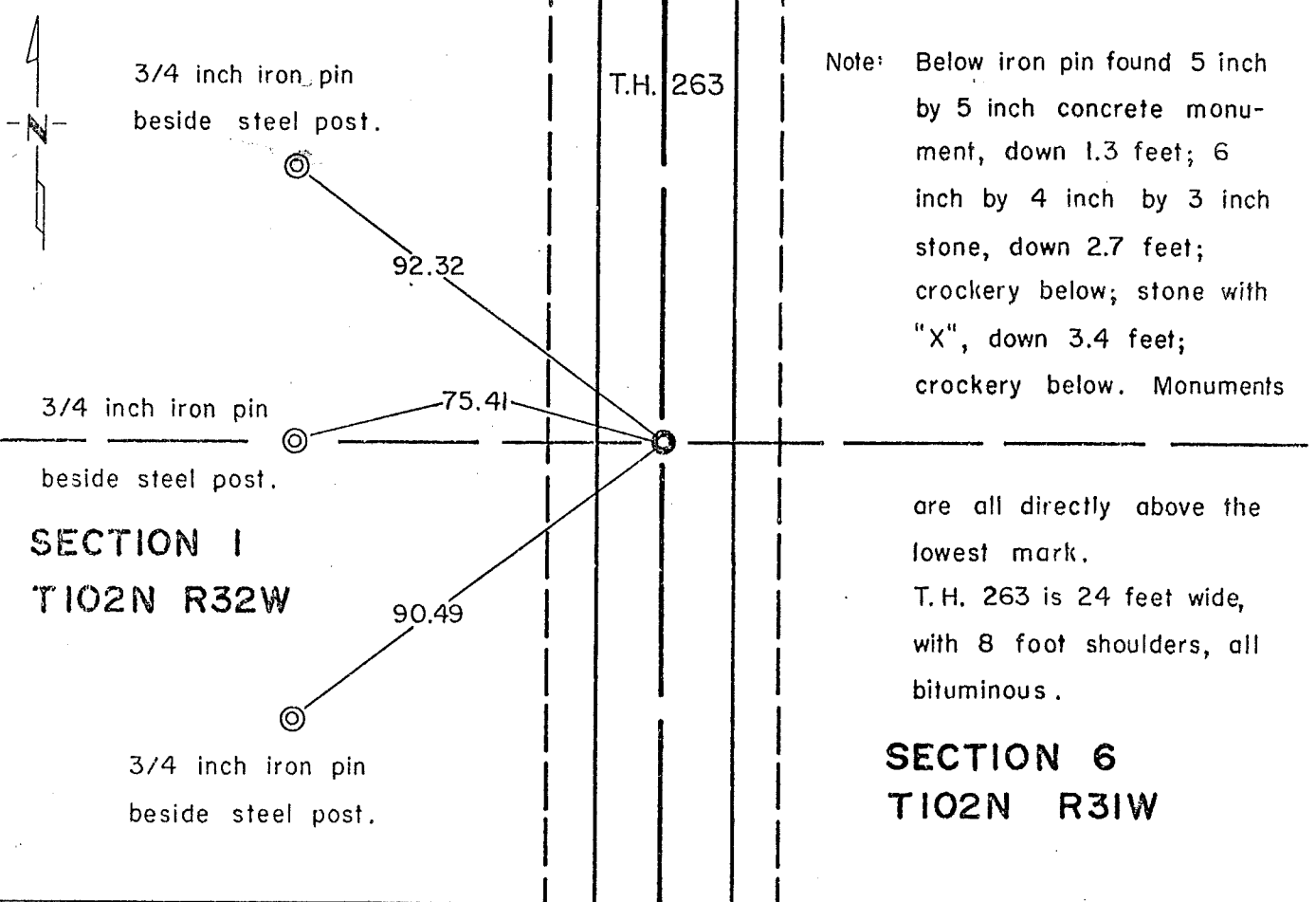
# CERTIFICATE OF LOCATION OF GOVERNMENT CORNER

EAST QUARTER Corner of Section 1, Township 102 N, Range 32W, 5 P.M.  
STATE OF MINNESOTA, County of MARTIN

At the corner location shown on the sketch:

- On May 6, 1976 found a iron pin, flush, in centerline of T.H. 263 at station  
541 + 51.7. (See note below.)  
 left monument as found,  lowered monument,  removed monument (explain)
- On July 28, 1976 placed a MHD cast iron monument, flush, with a 3/4 inch  
by 24 inch iron pin below after construction removed inplace monuments.

SKETCH OF REFERENCE TIES



Statement of evidence relative to this corner location is on back of page.

I hereby certify that this document and the data contained herein was prepared by me or under my direct supervision.

G. Eldon Lober JAN 19 1982  
SIGNATURE DATE

Registration No. 11933

Land Surveyor,  Professional Engineer  
 County Surveyor,  County Engineer

OFFICE OF THE COUNTY RECORDER  
County of Martin

I hereby certify that this document was filed in the Co. Recorders office at 11:00 A.M. on the 1st day of February A.D. 19 82

County Recorder Herald Johnson  
By \_\_\_\_\_, Deputy

DOCUMENT NO. 265641

MICROFILMED

Statement of Evidence: East Quarter Corner Section 1, Township 102N, Range 32W, 5P.M.

- July 1854 John Ball, Original Deputy Government Land Surveyor, "Set gr. Sec. Post and built mound with trench per instructions. Drove charred stake in center and planted apple seed in Southeast Corner."
- September 23, 1899 C. F. Montgomery, surveyed part of outlot #9 Campbell addition. Identified East Quarter Corner, Section 1 "Stone with "+".
- November 18, 1919 George E. Sawyer, Deputy County Surveyor, identified East Quarter Corner and built up crockey above the stone. Set stone 6 inch by 4 inch by 3 inch with "+" 2 inches below surface of 2 foot grade. Corner is 31.8 feet west of corner fence post.
- May 6, 1976 Minnesota Department of Transportation, George Koens etal, found iron rod flush with surface of road over a 5 inch by 5 inch concrete monument down 1.3 feet, over a 6 inch by 4 inch by 3 inch stone marked "+" down 2.7 feet with crockery below stone, below crockery is another stone with "+" down 3.4 feet and crockery also below this stone. Truck Highway Sta. is 541+51.7.
- May-July, 1976 In excavating the subgrade treatment for road construction this land corner was destroyed. Minnesota Department of Transprotation field crew made reference ties to perpetuate it's location prior to being destroyed.

An analysis of the Statement of Evidence and field measurements indicate that the inplace stone provided a continuous chain of perpetuation of the monument placed by C. F. Montgomery in 1899. I Therefore accept the monument as the location of the land corner.

For additional information, including field measurements and photographs, contact the Minnesota Department of Transportation in Windom, Minnesota.