

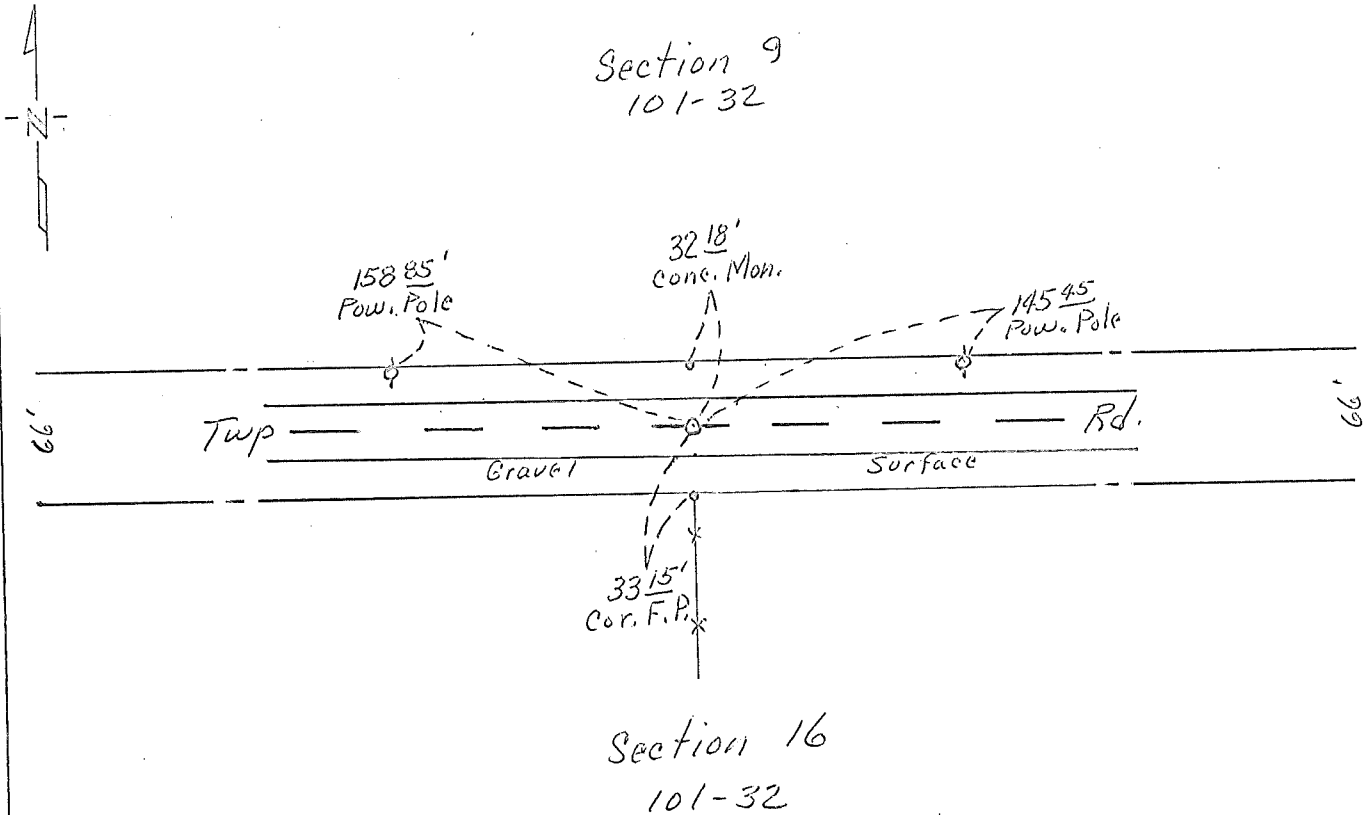
# CERTIFICATE OF LOCATION OF GOVERNMENT CORNER

South 1/4 Corner of Section 9, Township 101 N., Range 32 W., 5<sup>th</sup> P.M.  
STATE OF MINNESOTA, County of Martin

At the corner location shown on the sketch:

- On May 10, 1978 found a Stone with a "t" over Crockery, 26" Deep.  
DATE
- left monument as found,  lowered monument,  removed monument (explain)
- On May 10, 1978 placed a Concrete monument with Steel Center over,  
7" Deep.  
DATE

## SKETCH OF REFERENCE TIES



Statement of evidence relative to this corner location is on back of page.

I hereby certify that this document and the data contained herein was prepared by me or under my direct supervision.

\_\_\_\_\_  
SIGNATURE DATE

Registration No. 10,000

- Land Surveyor,  Professional Engineer
- County Surveyor,  County Engineer

## OFFICE OF THE COUNTY RECORDER

County of \_\_\_\_\_

I hereby certify that this document was filed in the Co. Recorders office at \_\_\_\_\_ .M. on the \_\_\_\_\_ day of \_\_\_\_\_ A.D., 19 \_\_\_\_\_

County Recorder \_\_\_\_\_

By \_\_\_\_\_, Deputy

DOCUMENT NO. \_\_\_\_\_