

# CERTIFICATE OF LOCATION OF GOVERNMENT CORNER

Southeast Corner of Section 9, Township 101 N., Range 32 W., 5th P.M.  
STATE OF MINNESOTA, County of Martin

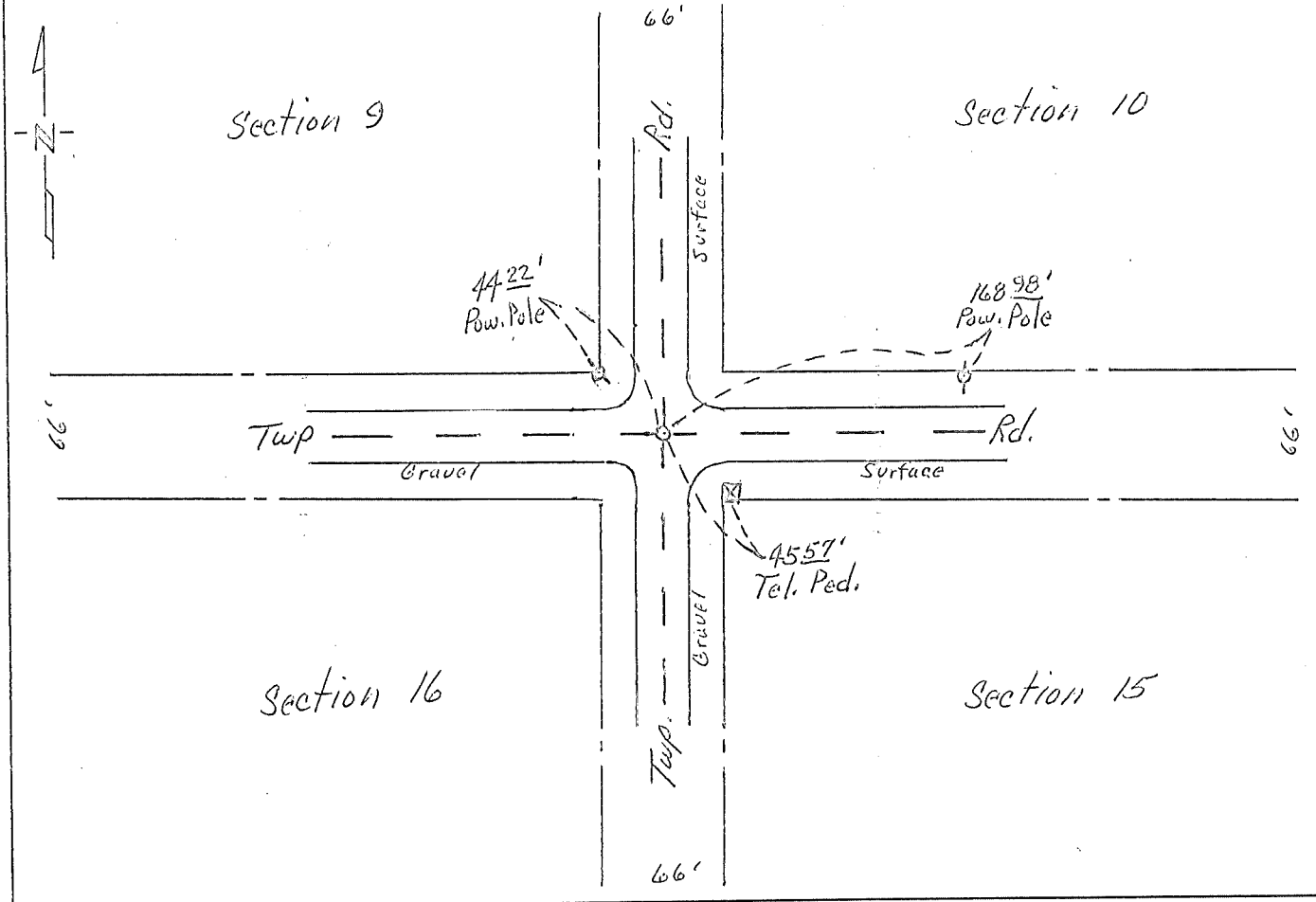
At the corner location shown on the sketch:

On May 10, 1978 found a Stone with a "t" over Crockery, 18" Deep.  
DATE

left monument as found,  lowered monument,  removed monument (explain)

On May 10, 1978 placed a Concrete Monument with Steel Center, over stone  
DATE 6" Deep.

SKETCH OF REFERENCE TIES



Statement of evidence relative to this corner location is on back of page.

I hereby certify that this document and the data contained herein was prepared by me or under my direct supervision.

\_\_\_\_\_  
SIGNATURE DATE

Registration No. 10,000

- Land Surveyor,  Professional Engineer
- County Surveyor,  County Engineer

## OFFICE OF THE COUNTY RECORDER

County of \_\_\_\_\_

I hereby certify that this document was filed in the Co. Recorders office at \_\_\_\_\_ .M. on the \_\_\_\_\_ day of \_\_\_\_\_ A.D., 19 \_\_\_\_\_

County Recorder \_\_\_\_\_

By \_\_\_\_\_, Deputy

DOCUMENT NO. \_\_\_\_\_