

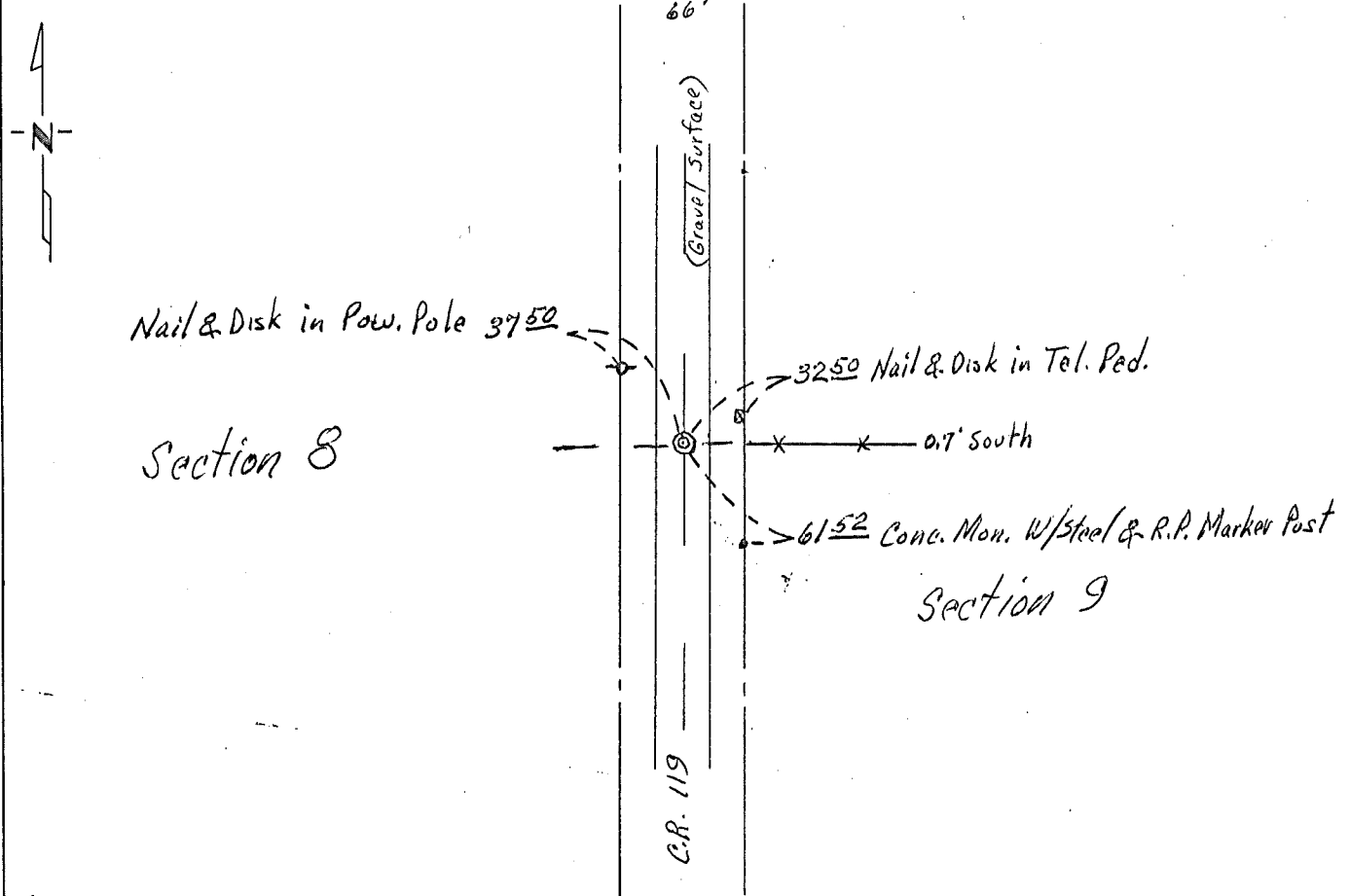
CERTIFICATE OF LOCATION OF GOVERNMENT CORNER

East Quarter Corner of Section 8, Township 101 N., Range 32 W., 5th P.M.
STATE OF MINNESOTA, County of Martin

At the corner location shown on the sketch:

- On Sept. 12, 1975 found a Crockery Deposit, 16" Deep, "Stone Gone"
DATE
- left monument as found, lowered monument, removed monument (explain)
- On Sept. 7, 1977 placed a Concrete Monument with Steel Center, over Crockery,
DATE 4" Deep

SKETCH OF REFERENCE TIES



Statement of evidence relative to this corner location is on back of page.

I hereby certify that this document and the data contained herein was prepared by me or under my direct supervision.

Robert Witty 3/90/78
SIGNATURE DATE

Registration No. 10,000

- Land Surveyor, Professional Engineer
- County Surveyor, County Engineer

OFFICE OF THE COUNTY RECORDER

County of _____

I hereby certify that this document was filed in the Co. Recorders office at _____ .M. on the _____ day of _____ A.D., 19 _____

County Recorder _____

By _____, Deputy

DOCUMENT NO. _____