

CERTIFICATE OF LOCATION OF GOVERNMENT CORNER

East 1/4 Corner of Section 6, Township 101N, Range 32 W., 5th P.M.

STATE OF MINNESOTA, County of Martin

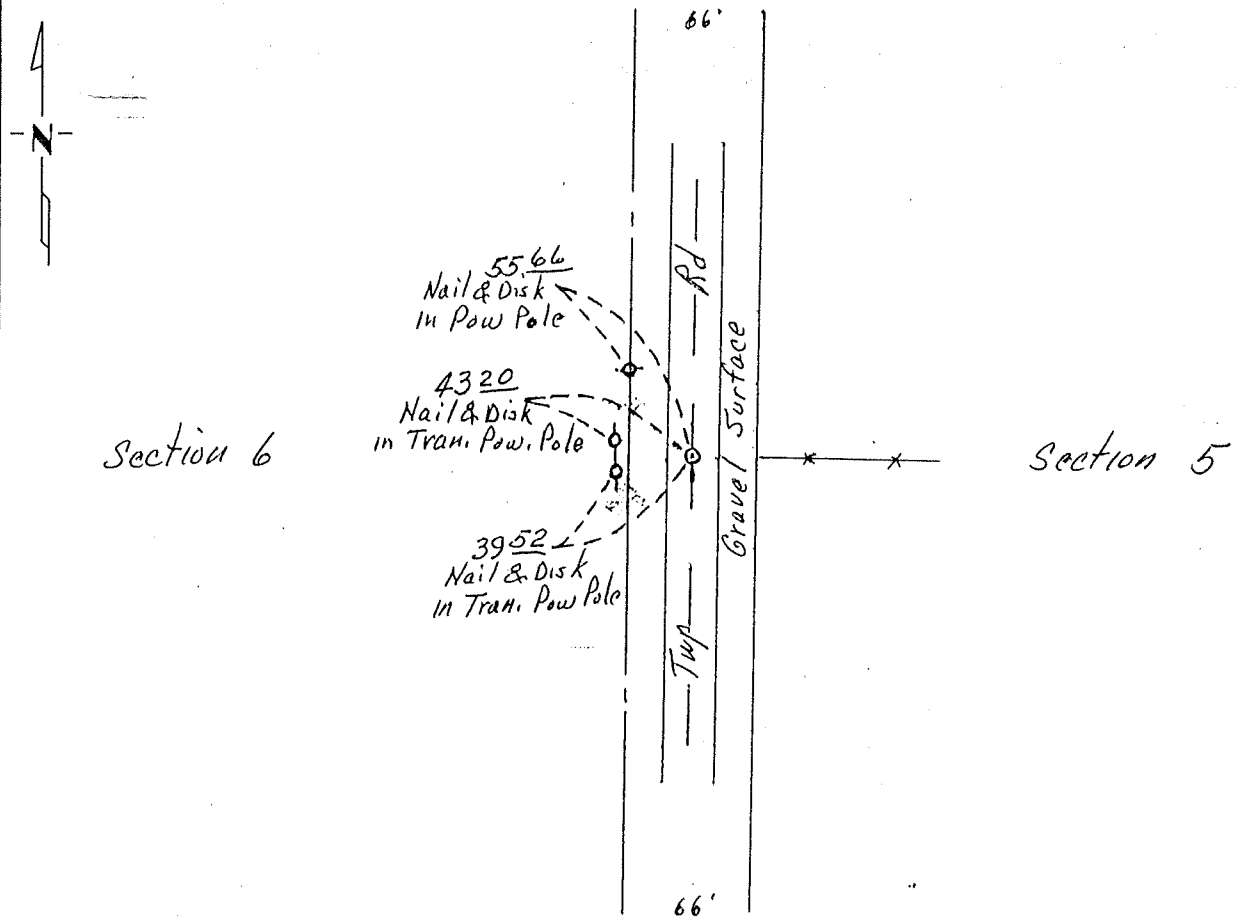
At the corner location shown on the sketch:

On July 12, 1982 found a Stone "T", 18" Deep.
DATE

left monument as found, lowered monument, removed monument (explain)

On July 12, 1982 placed a Conc. Mon./Steel over, 6" Deep.
DATE

SKETCH OF REFERENCE TIES



Statement of evidence relative to this corner location is on back of page.

I hereby certify that this document and the data contained herein was prepared by me or under my direct supervision.

Robert Wilty 3-4-83
SIGNATURE DATE

Registration No. 19,008

- Land Surveyor, Professional Engineer
- County Surveyor, County Engineer

OFFICE OF THE COUNTY RECORDER

County of _____

I hereby certify that this document was filed in the Co. Recorders office at _____ .M. on the _____ day of _____ A.D., 19 _____

County Recorder _____

By _____, Deputy

DOCUMENT NO. _____