

# CERTIFICATE OF LOCATION OF GOVERNMENT CORNER

Southeast Corner of Section 4, Township 101N, Range 32W, 5 P.M.

STATE OF MINNESOTA, County of Martin

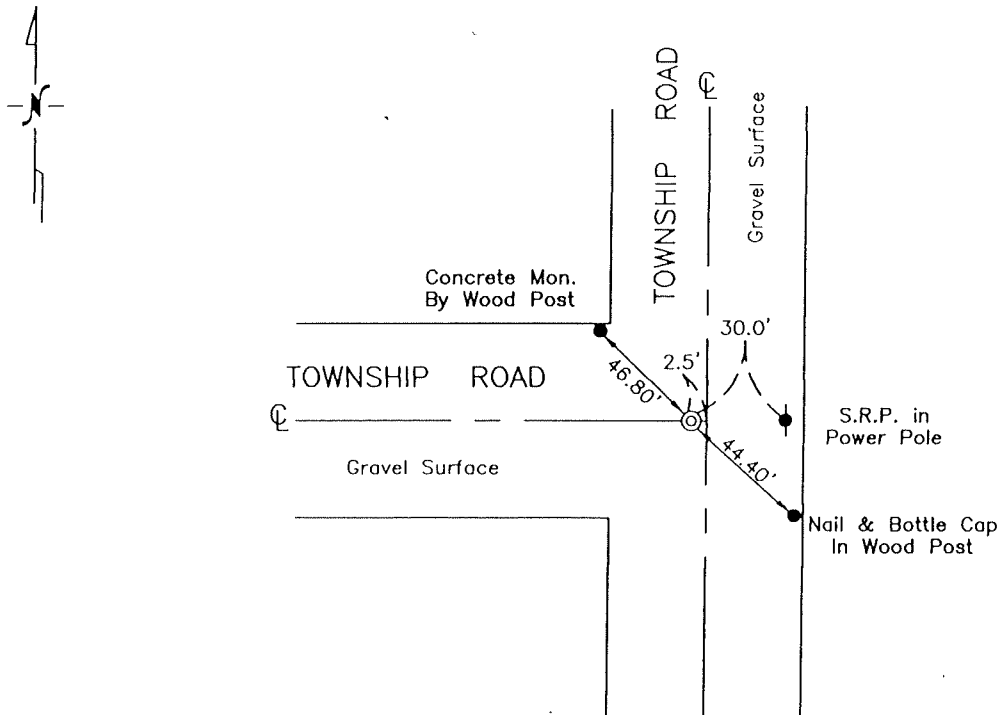
At the corner location shown on the sketch:

On Nov. 1996 found a PVC with Concrete & Iron Shaft (8" Deep)  
DATE

left monument as found,  lowered monument,  removed monument (explain)

On \_\_\_\_\_ placed a \_\_\_\_\_  
DATE

## SKETCH OF REFERENCE TIES



Statement of evidence relative to this corner is on the back of page.

I hereby certify that this document and the data contained herein was prepared by me or under my direct supervision.

*Bruce D. Fabis*  
SIGNATURE

12/23/1996  
DATE

Registration No. 13309

- Land Surveyor,  Professional Engineer
- County Surveyor,  County Engineer

OFFICE OF THE COUNTY RECORDER

County of \_\_\_\_\_

I hereby certify that this document was filed in the Co. Recorders office at \_\_\_\_\_ P.M. on the \_\_\_\_\_ day of \_\_\_\_\_ A.D., 19\_\_

County Recorder \_\_\_\_\_

By \_\_\_\_\_, Deputy

DOCUMENT NO. \_\_\_\_\_