

# CERTIFICATE OF LOCATION OF GOVERNMENT CORNER

East Quarter Corner of Section 4, Township 101N, Range 32W, 5 P.M.

STATE OF MINNESOTA, County of Martin

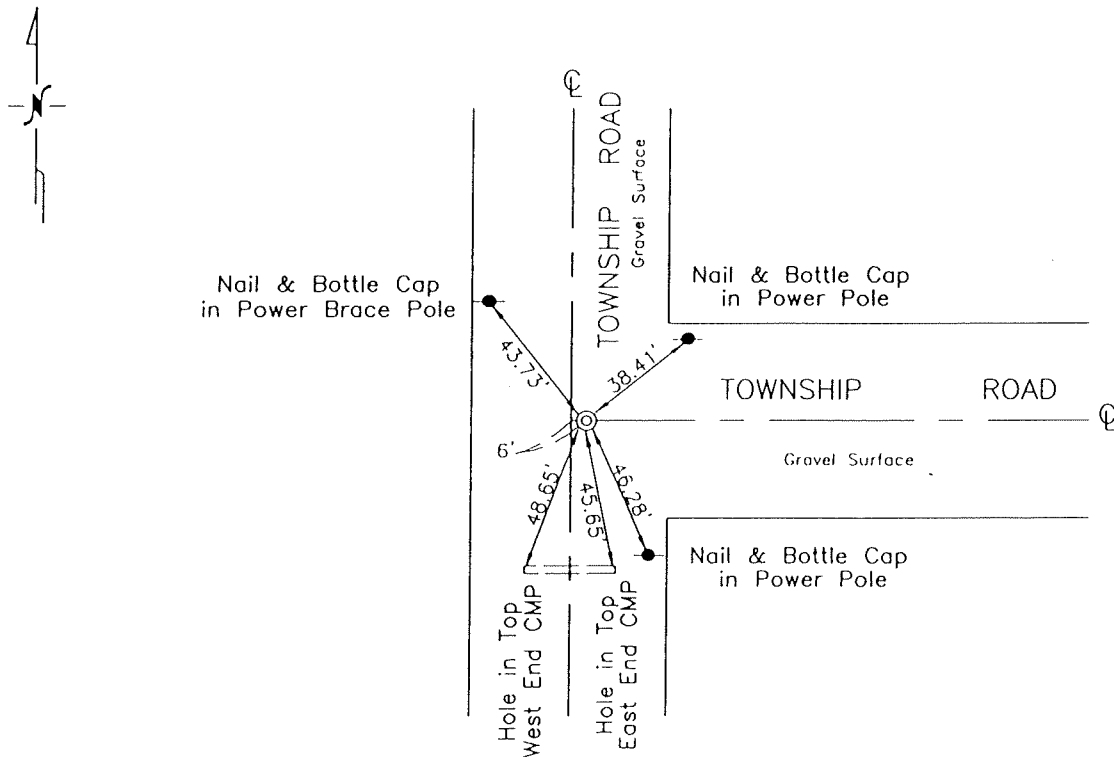
At the corner location shown on the sketch:

On Nov. 1996 found a PVC with Concrete & 1" Iron Shaft (12" Deep)  
DATE

left monument as found,  lowered monument,  removed monument (explain)

On Nov. 1996 placed a 5/8" X 8" Iron Pipe Over  
DATE

## SKETCH OF REFERENCE TIES



Statement of evidence relative to this corner is on the back of page.

I hereby certify that this document and the data contained herein was prepared by me or under my direct supervision.

*Bruce D. Finkins*  
SIGNATURE

12/23/96  
DATE

Registration No. 13309

- Land Surveyor,  Professional Engineer  
 County Surveyor,  County Engineer

OFFICE OF THE COUNTY RECORDER

County of \_\_\_\_\_

I hereby certify that this document was filed in the Co. Recorders office at \_\_\_\_\_ P.M. on the \_\_\_\_\_ day of \_\_\_\_\_ A.D., 19\_\_

County Recorder \_\_\_\_\_

By \_\_\_\_\_, Deputy

DOCUMENT NO. \_\_\_\_\_

## Statement of Evidence

### EAST QUARTER CORNER OF SECTION 4, T101N, R32W

The Public Land Survey of Section 3, Township 101 North, Range 32 West of the Fifth Principal Meridian was run in 1857. A quarter section post was placed to mark the West Quarter corner of Section 3.

In 1884, L.F. Brainerd (Survey No. 518-A-243) ran the quarter line east-west across section.

In July, 1928, (Survey No. 280-F-94 1/2) Deputy County Surveyor George E. Sawyer located the corner by pits (E,W, & N) under 15" fill, did not seek South pit. He then renewed the corner with crockery and a grey granite granular stone with a chiseled cross.

In May, 1936, Sawyer (Survey No. 121-G-77) identified the W 1/4 corner using Survey 280-F-94 1/2 and found stone with chiseled cross. He renewed the corner with crockery above cross and set rough granite stone with chiseled cross.

In July, 1981, a Bolton & Menk, Inc. survey crew found a stone with a chiseled cross, 39" deep with a 3/4" steel rod on north side with top bent over cross. They placed a County PVC and concrete to mark the corner.

In November, 1996, a Bolton & Menk, Inc. survey crew found a PVC marker with iron and placed a 5/8" iron pipe over it to mark the corner.

Analysis of record data and survey measurements support the monumented position as a valid perpetuation of the Public Land Survey Corner.