

# CERTIFICATE OF LOCATION OF GOVERNMENT CORNER

East Quarter \_\_\_\_\_ Corner of Section 3, Township 101N, Range 32W, 5 P.M.

STATE OF MINNESOTA, County of Martin

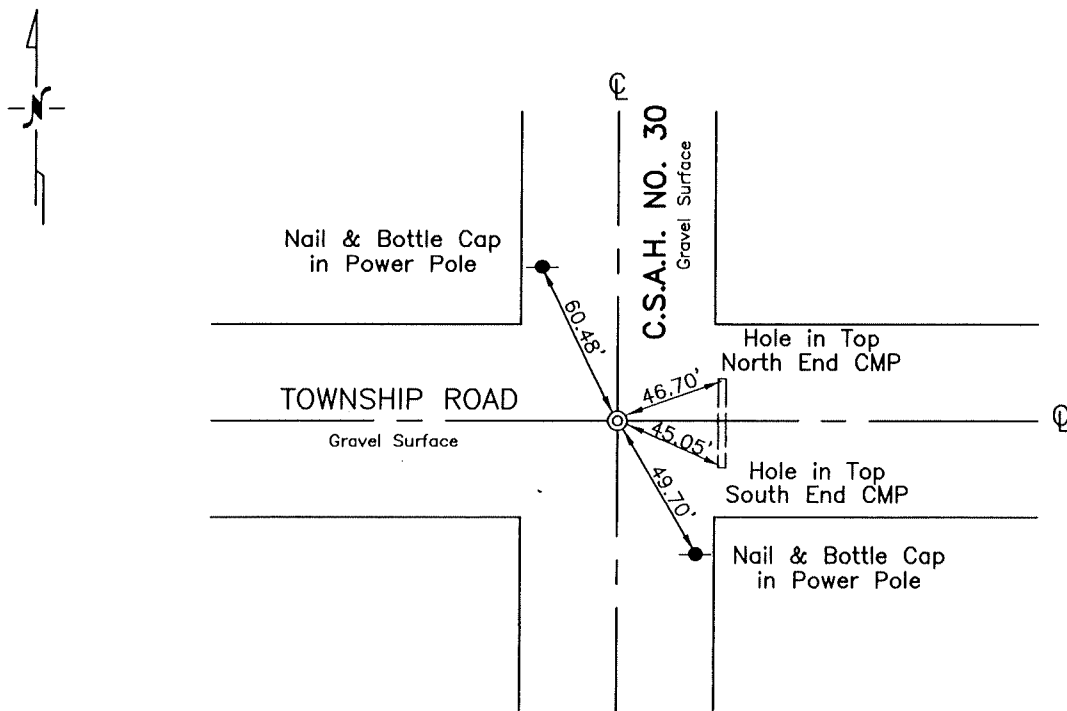
At the corner location shown on the sketch:

On Nov. 1996 found a 1" Iron Shaft (8" Deep)  
DATE

left monument as found,  lowered monument,  removed monument (explain)

On \_\_\_\_\_ placed a \_\_\_\_\_  
DATE

## SKETCH OF REFERENCE TIES



Statement of evidence relative to this corner is on the back of page.

I hereby certify that this document and the data contained herein was prepared by me or under my direct supervision.

\_\_\_\_\_  
SIGNATURE DATE

Registration No. 13309

- Land Surveyor,  Professional Engineer
- County Surveyor,  County Engineer

OFFICE OF THE COUNTY RECORDER  
County of \_\_\_\_\_

I hereby certify that this document was filed in the Co. Recorders office at \_\_\_\_\_ P.M. on the \_\_\_\_\_ day of \_\_\_\_\_ A.D., 19\_\_\_\_

County Recorder \_\_\_\_\_

By \_\_\_\_\_, Deputy

DOCUMENT NO. \_\_\_\_\_

Statement of Evidence

EAST QUARTER CORNER OF SECTION 3, T101N, R32W

The Public Land Survey of Section 3, Township 101 North, Range 32 West was run in 1857. A quarter section corner post was placed to mark the East Quarter corner of Section 3.

In May, 1884, County Surveyor L.F. Brainerd (Survey No. 518-A-243) ran quarter line east-west across section.

In October, 1889 County Surveyor C. T. Montgomery (Survey No. 35-A-253) located the corner by a "stone in road sunk in place occupied by old stake".

In October, 1891, Montgomery (Survey No. 86-B-128) showed stone but no distances.

In July, 1919, Deputy County Surveyor George E. Sawyer (Survey No. 332-E-148) identified the corner by a large boulder from Survey 35-A-253. He then renewed the corner by making a faint chiseled cross for true corner and at 2' south made a crockery deposit for witness.

In June, 1933, Sawyer (Survey No. 559-F-186 1/2 & 189) identified the corner by Survey No. 332-E-148 and set another grey granite with a chiseled cross.

In May, 1936, (Survey No. 121-G-77) Sawyer located the corner and renewed it with built up crockery above chiseled cross and set dark granite stone with chiseled cross.

In May, 1969, Martin County Highway Department ties show a stone with a chiseled cross and a 1 1/4" iron pipe over stone.

In November, 1996, a Bolton & Menk, Inc. survey crew found a 1" iron rod marking the corner in conformance with the 1969 ties.

Analysis of record data and survey measurements support the monumented position as a valid perpetuation of the Public Land Survey Corner.