

CERTIFICATE OF LOCATION OF GOVERNMENT CORNER

LAKE BELT TWP.
EAST QUARTER

Corner of Section 28, Township 101N, Range 32W, 5th P.M.

STATE OF MINNESOTA, County of MARTIN

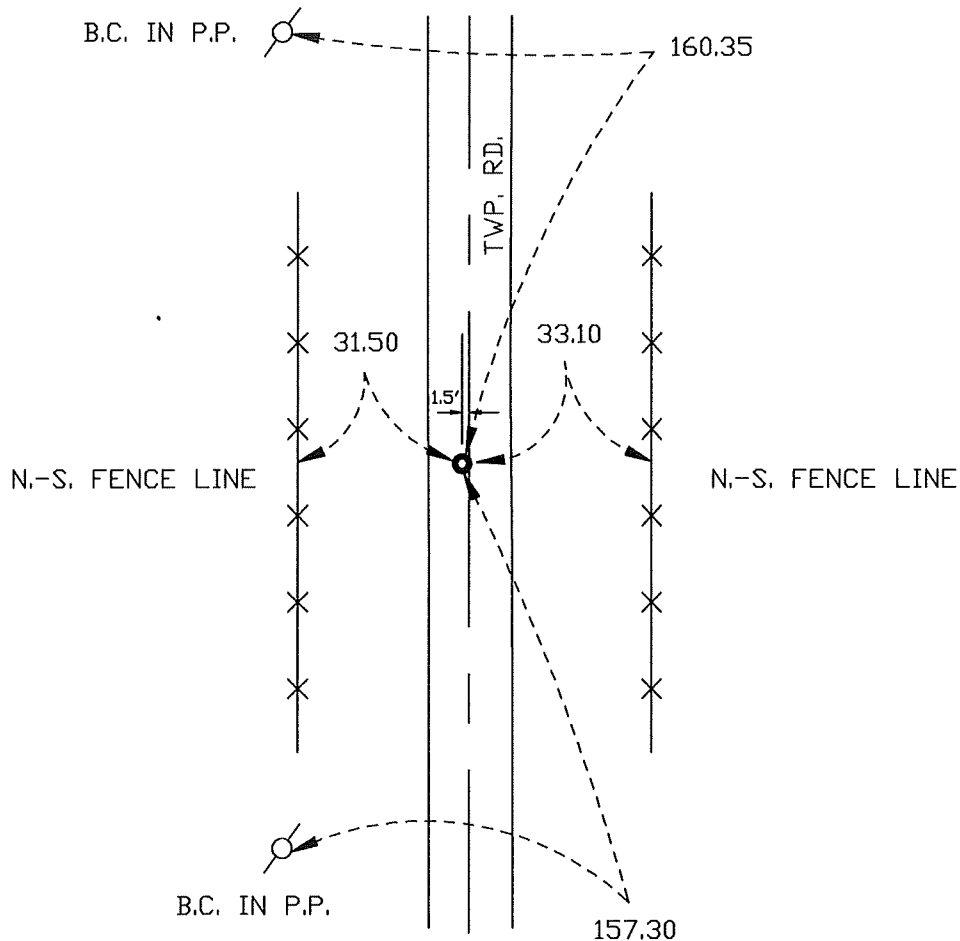
At the corner location shown on the sketch:

On 10-9-95 found a STONE WITH "X" (19" DEEP)
DATE

left monument as found, lowered monument, removed monument (explain)

On 10-9-95 Drilled a HOLE IN STONE AND SET 5/8" X 24" IRON PIPE WITH
ALUMINUM CAP
DATE

SKETCH OF REFERENCE TIES



Statement of evidence relative to this corner location is on back of page.

I hereby certify that this document and the data contained herein was prepared by me or under my direct supervision.

SIGNATURE DATE

Registration No. _____

- Land Surveyor, Professional Engineer
- County Surveyor, County Engineer

OFFICE OF THE REGISTER OF DEEDS

County of _____

I hereby certify that this document was filed in the Reg. of Deeds office at _____M. on the

_____ day of _____ A.D., 19____

Register of Deeds _____

By _____, Deputy

DOCUMENT NO. _____