

CERTIFICATE OF LOCATION OF GOVERNMENT CORNER

LAKE BELT

1/16 (NO. 5) Corner of Section 25, Township 101N, Range 32W, 5th P.M.

STATE OF MINNESOTA, County of MARTIN

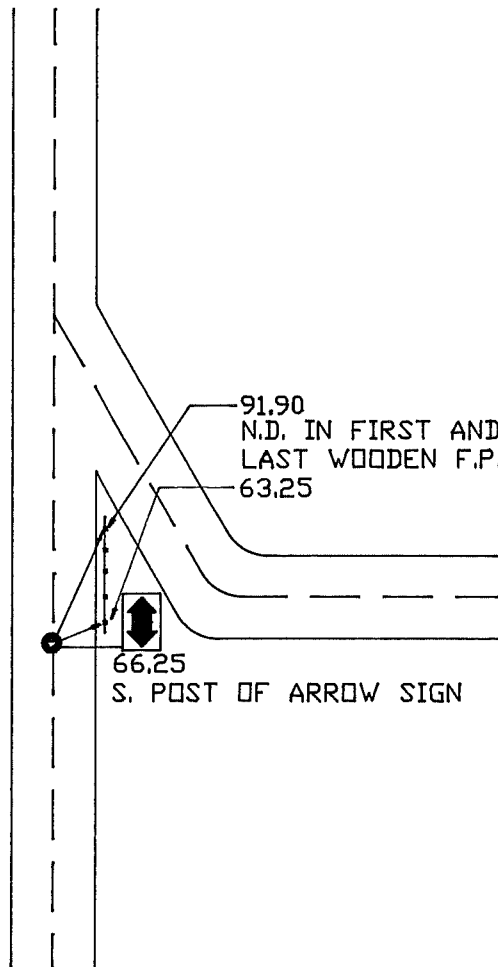
At the corner location shown on the sketch:

On 7-11-1994 found a 3/4" x 24" IRON PIPE - 3" DEEP
DATE

left monument as found, lowered monument, removed monument (explain)

On 7-11-1994 Placed a 5/8" x 30" IRON ROD WITH ALUM. CAP - 4" DEEP.
DATE

SKETCH OF REFERENCE TIES



Statement of evidence relative to this corner location is on back of page.

I hereby certify that this document and the data contained herein was prepared by me or under my direct supervision.

SIGNATURE DATE

Registration No. _____

- Land Surveyor, Professional Engineer
- County Surveyor, County Engineer

OFFICE OF THE REGISTER OF DEEDS
County of _____

I hereby certify that this document was filed in the Reg. of Deeds office at _____M. on the

_____ day of _____ A.D., 19____

Register of Deeds _____

By _____, Deputy

DOCUMENT NO. _____