

# CERTIFICATE OF LOCATION OF GOVERNMENT CORNER

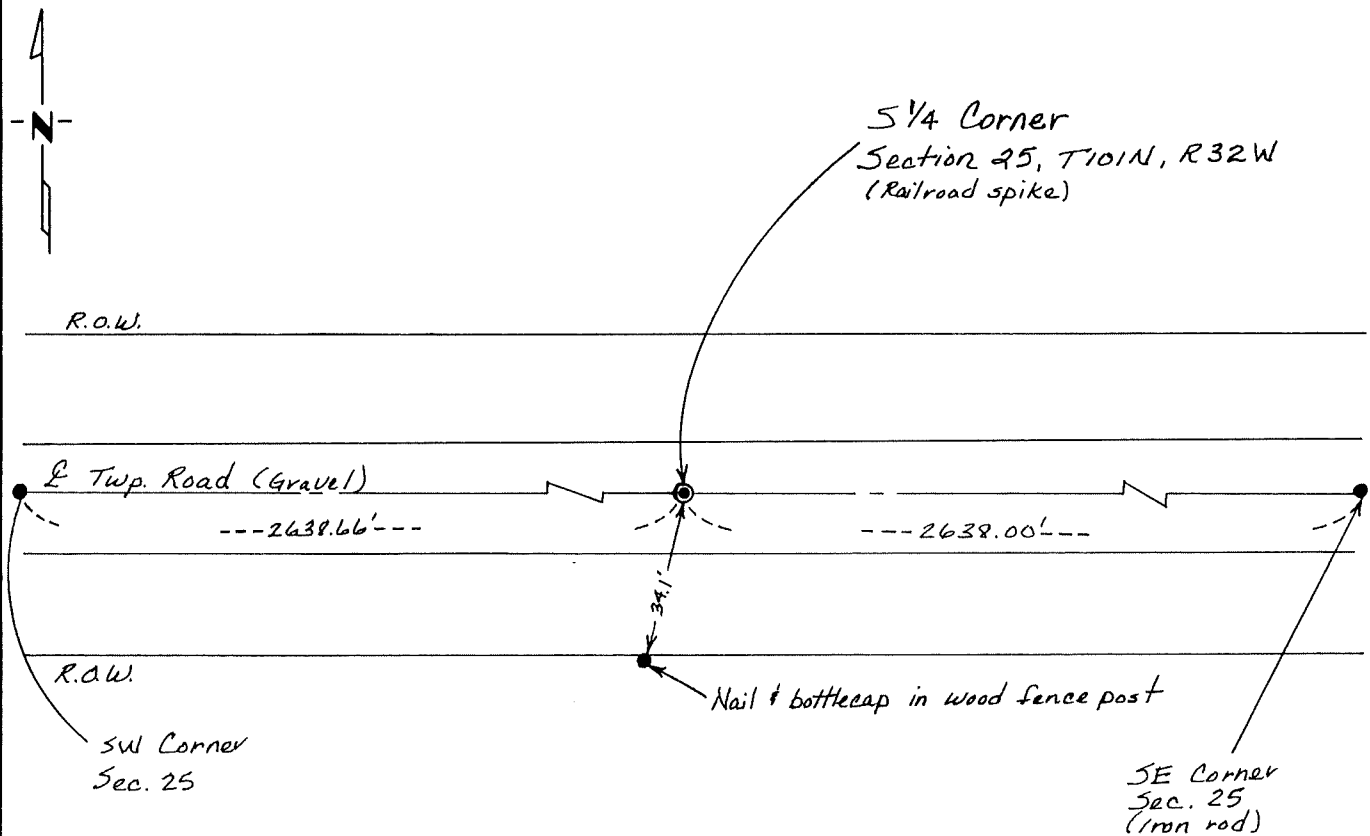
South Quarter \_\_\_\_\_ Corner of Section 25, Township 101N, Range 32W, 5th P.M.

STATE OF MINNESOTA, County of Martin

At the corner location shown on the sketch:

- On 1-89 found a 1" DNR iron over stone monument.  
DATE
- left monument as found,  lowered monument,  removed monument (explain)
- On \_\_\_\_\_ placed a \_\_\_\_\_  
DATE

## SKETCH OF REFERENCE TIES



Statement of evidence relative to this corner location is on back of page.

I hereby certify that this document and the data contained herein was prepared by me or under my direct supervision.

Bruce D. Fil 9/25/1991  
SIGNATURE DATE

Registration No. 13309

- Land Surveyor,  Professional Engineer
- County Surveyor,  County Engineer

## OFFICE OF THE COUNTY RECORDER

County of \_\_\_\_\_

I hereby certify that this document was filed in the Co. Recorders office at \_\_\_\_\_ .M. on the \_\_\_\_\_ day of \_\_\_\_\_ A.D., 19 \_\_\_\_\_

County Recorder \_\_\_\_\_

By \_\_\_\_\_, Deputy

DOCUMENT NO. \_\_\_\_\_

Statement of Evidence:

HISTORY  
SOUTH QUARTER CORNER  
SECTION 25, TOWNSHIP 101 NORTH, RANGE 32 WEST  
MARTIN COUNTY, MINNESOTA

The Public Land Survey of Section 25, Township 101 North, Range 32 West of the Fifth Principal Meridian was found in 1857. A charred stake and a wooden post, witnessed by pits and a mound, were placed to mark the South Quarter corner of Section 25.

In October, 1886, County Surveyor Brainerd (Survey No. 25-A-247) identified the corner by mounds and pits. He then renewed the corner with post in mound of stones.

In December, 1900, (Survey No. 70-D-32) Deputy County Surveyor George E. Sawyer was unable to locate corner. He then renewed the corner with 14x11x4 grey granite stone with chiseled cross and "½", 1" deep.

In September, 1976, Schnobrich Danielson & Associates (Survey No. 220-3A) found nothing at the corner. Two 3/4"x24" iron pipes were placed, one on top of the other at P.I of road and fence line south to mark the corner.

County Highway Department ties call for stone with chiseled cross at the corner.

In December, 1983, Minnesota Department of Natural Resources (File G-515) located the corner by a 14x11x4 granite stone. A 9-3/4" DNR iron was set over stone.

In January, 1989, a Bolton & Menk, Inc. survey crew found a 1" DNR iron over stone monument marking the corner. Schnobrich Danielson & Associates iron was found 7.43' west.

Analysis of record data and survey measurements support the monumented position as a valid perpetuation of the Public Land Survey Corner.