

CERTIFICATE OF LOCATION OF GOVERNMENT CORNER

LAKE BELT
 SOUTHEAST _____ Corner of Section 24 , Township 101N , Range 32W , 5th P.M.

STATE OF MINNESOTA, County of MARTIN

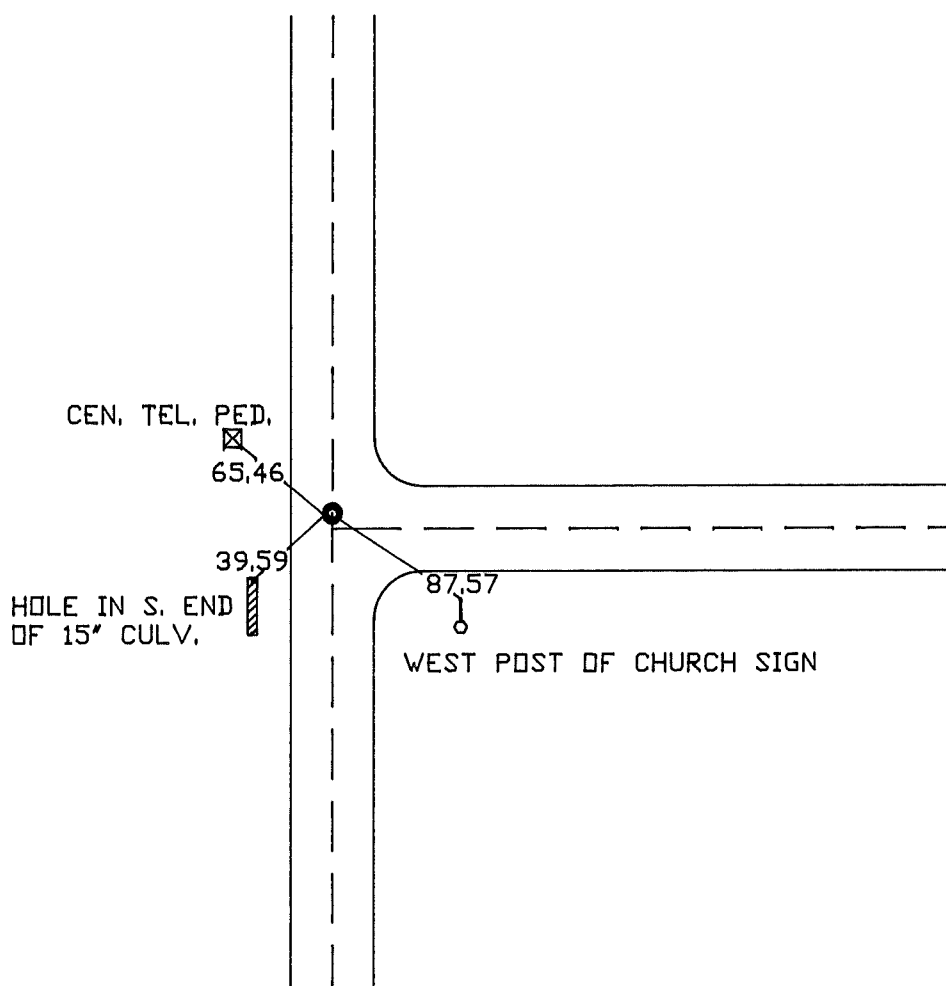
At the corner location shown on the sketch:

On 7-11-1994 found a RAILROAD SPIKE IN BIT, PAVEMENT.
DATE

left monument as found, lowered monument, removed monument (explain)

On 7-11-1994 Placed a 5/8" x 24" IRON ROD WITH ALUM. CAP.
DATE

SKETCH OF REFERENCE TIES



Statement of evidence relative to this corner location is on back of page.

I hereby certify that this document and the data contained herein was prepared by me or under my direct supervision.

SIGNATURE DATE

Registration No. _____

- Land Surveyor, Professional Engineer
- County Surveyor, County Engineer

OFFICE OF THE REGISTER OF DEEDS
 County of _____

I hereby certify that this document was filed in the Reg. of Deeds office at _____ M. on the

_____ day of _____ A.D., 19_____

Register of Deeds _____

By _____, Deputy

DOCUMENT NO. _____