

# CERTIFICATE OF LOCATION OF GOVERNMENT CORNER

LAKE BELT  
SOUTHEAST \_\_\_\_\_ Corner of Section 21, Township 101N, Range 32W, 5th P.M.

STATE OF MINNESOTA, County of MARTIN

At the corner location shown on the sketch:

- On 7-11-1994 found a 3/4" x 24" IRON PIPE - 10" DEEP  
DATE

---

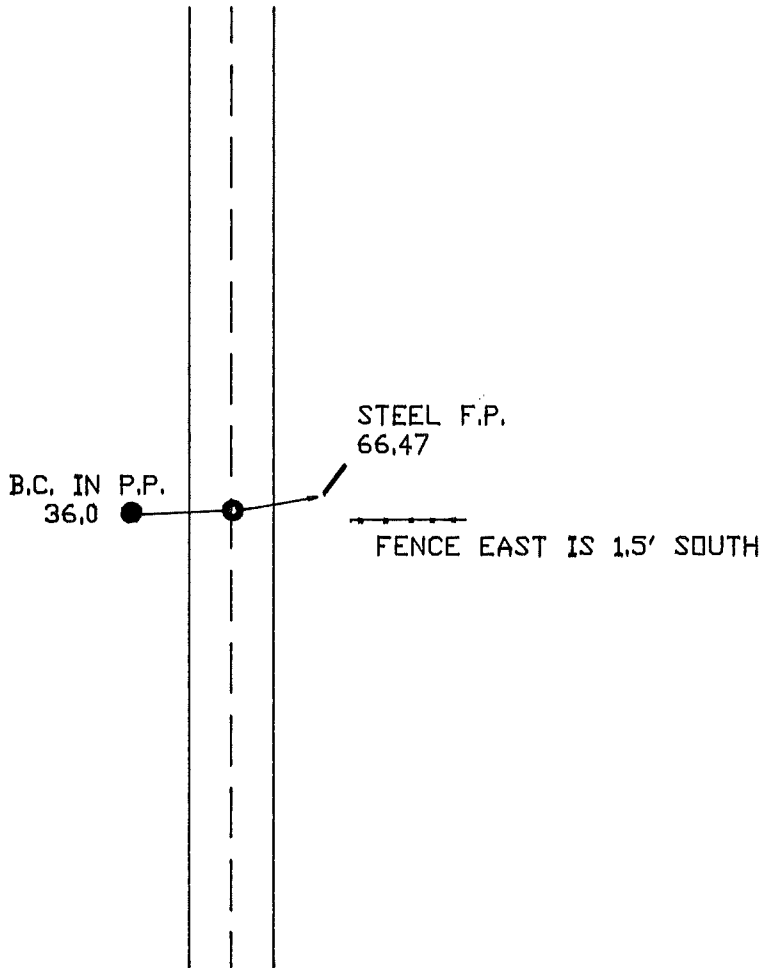
- left monument as found,  lowered monument,  removed monument (explain)

---

- On 7-11-1994 Placed a 5/8" x 30" IRON ROD WITH ALUM CAP 4" DEEP  
DATE

---

## SKETCH OF REFERENCE TIES



Statement of evidence relative to this corner location is on back of page.

I hereby certify that this document and the data contained herein was prepared by me or under my direct supervision.

\_\_\_\_\_  
SIGNATURE                      DATE

Registration No. \_\_\_\_\_

- Land Surveyor,                       Professional Engineer
- County Surveyor,                       County Engineer

OFFICE OF THE REGISTER OF DEEDS  
County of \_\_\_\_\_

I hereby certify that this document was filed in the Reg. of Deeds office at \_\_\_\_\_, M. on the

\_\_\_\_\_ day of \_\_\_\_\_ A.D., 19\_\_\_\_

Register of Deeds \_\_\_\_\_

By \_\_\_\_\_, Deputy

DOCUMENT NO. \_\_\_\_\_