

CERTIFICATE OF LOCATION OF GOVERNMENT CORNER

LAKE BELT
SOUTHEAST

Corner of Section 2, Township 101N, Range 32W, 5th P.M.

STATE OF MINNESOTA, County of MARTIN

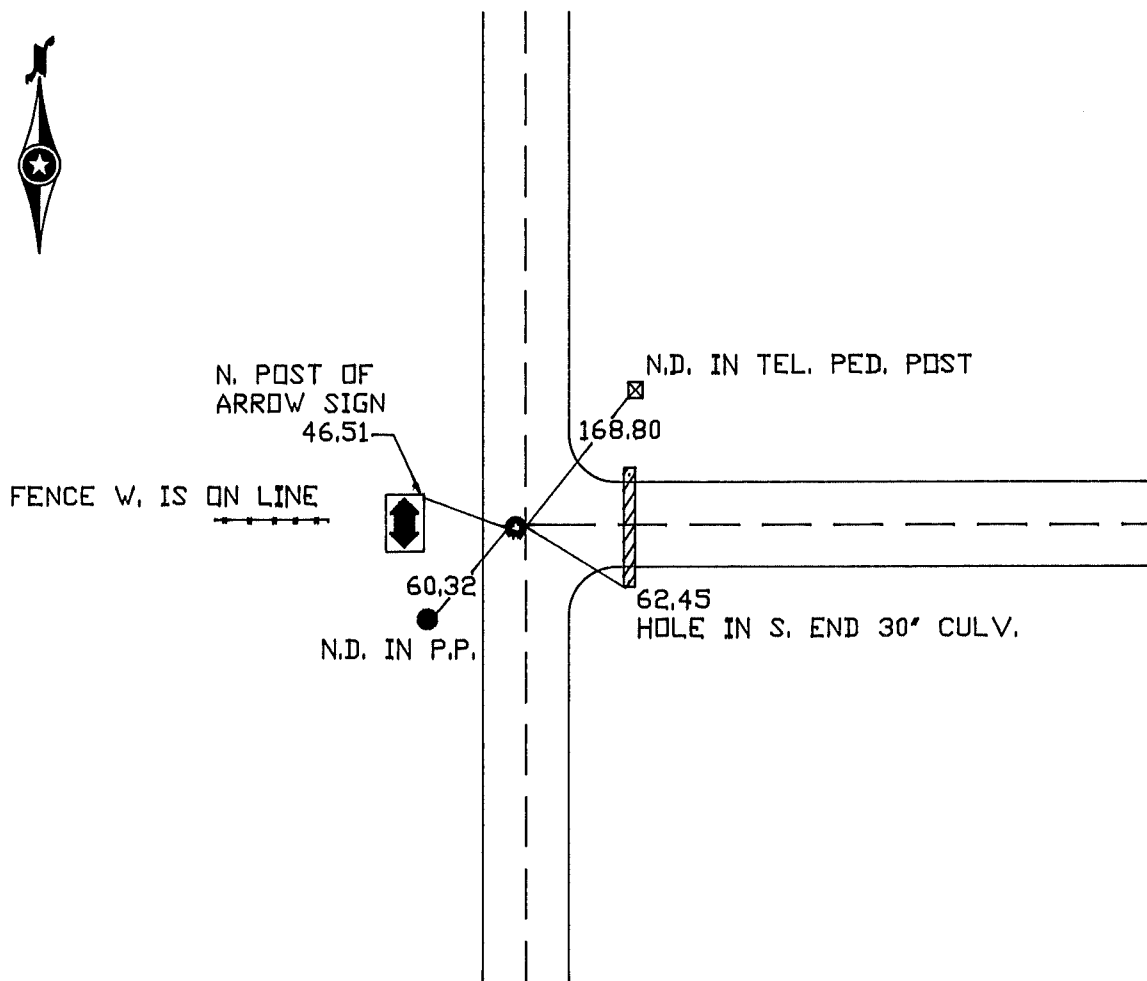
At the corner location shown on the sketch:

On 7-11-1994 found a RAIL ROAD SPIKE IN BIT. PAVEMENT.
DATE

left monument as found, lowered monument, removed monument (explain)

On 7-11-1994 Placed a 5/8" x 30" IRON ROD WITH ALUM. CAP 5" DEEP.
DATE

SKETCH OF REFERENCE TIES



Statement of evidence relative to this corner location is on back of page.

I hereby certify that this document and the data contained herein was prepared by me or under my direct supervision.

SIGNATURE DATE

Registration No. _____

- Land Surveyor, Professional Engineer
- County Surveyor, County Engineer

OFFICE OF THE REGISTER OF DEEDS
County of _____

I hereby certify that this document was filed in the Reg. of Deeds office at _____ M. on the

_____ day of _____ A.D., 19____

Register of Deeds, _____

By _____, Deputy

DOCUMENT NO. _____

The corner was originally established during the public land survey which was completed in Lake Belt Township in 1857.

A survey of roads in Lake Belt Township made by C.T. Montgomery, dated May, 1893, in County Surveyor's Book B, page 248, indicates a stake at the corner.

A survey made by C.T. Montgomery, dated March, 1899, in County Surveyor's Book C, page 151, indicates the corner was identified by an oak stake.

A survey made by George E. Sawyer, dated May, 1935, Survey No. 58, Book G, identified corner at rotten stake and set a 10" x 9" x 6" stone with "+" over crockery.

The Martin County Highway Department in 1972 found a stone "+" over crockery (37" deep) and set a $1\frac{1}{2}$ " iron pipe. The remaining ties are as follows:

64.4N.E. = Hole in N. end 24" culvert
62.7S.E. = Hole in S. end 24" culvert
fence is 1'-0"S.

On 4/2/82, I found a 1" iron rod (6" deep) in agreement with previous ties.