

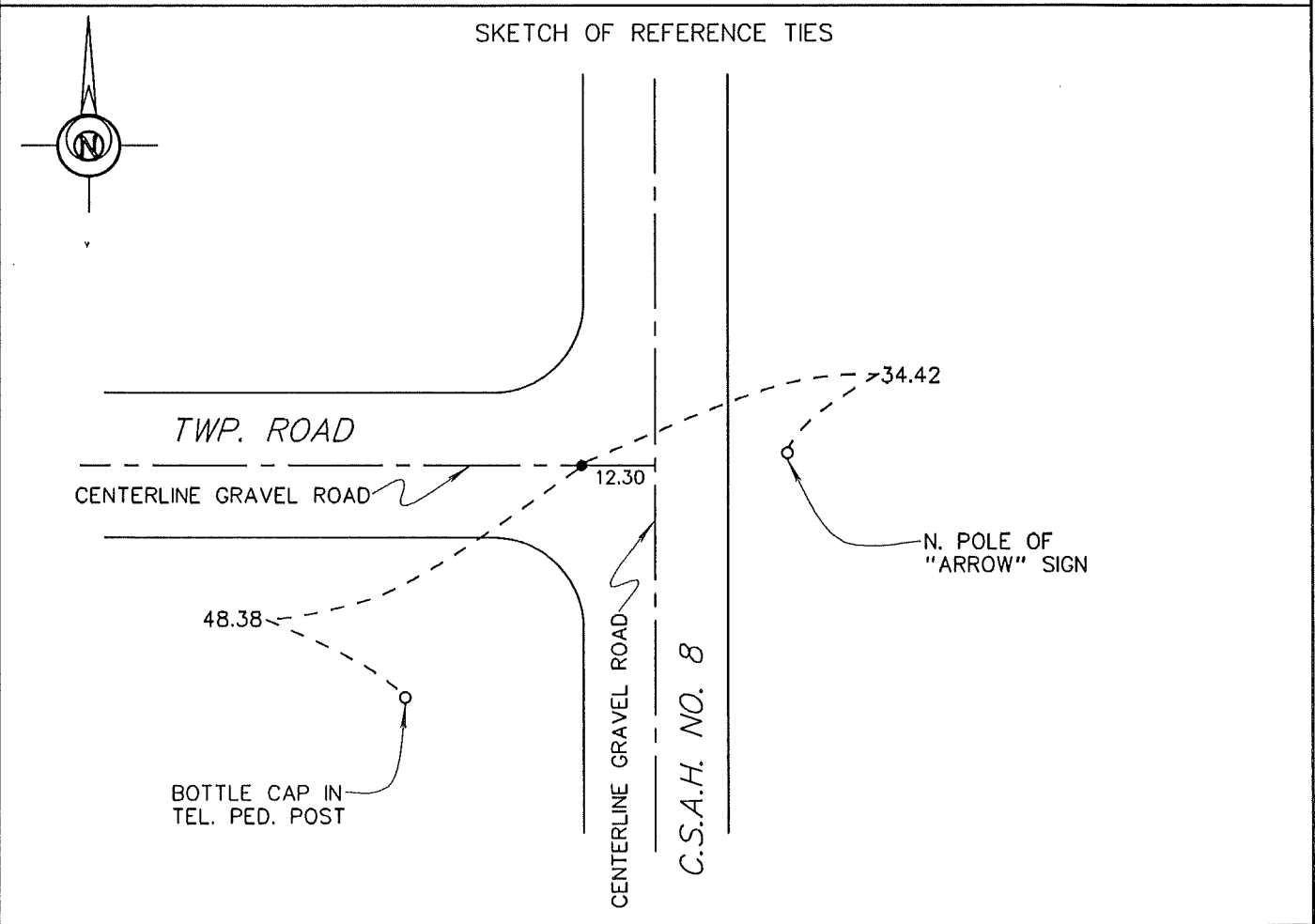
CERTIFICATE OF LOCATION OF GOVERNMENT CORNER

SOUTHEAST Corner of Section 17, Township 101 N., Range 32 W., 5TH P.M.

STATE OF MINNESOTA, County of MARTIN

At the corner location shown on the sketch:

- On 7-28-93 found a BENT 3/4" ROD (SURFACE)
DATE
- left monument as found, lowered monument, removed monument (explain)
- On 7-28-93 placed a 3/4" IRON PIPE INPLACE OF THE BENT ROD (SURFACE).
DATE



Statement of evidence relative to this corner location is on back of page.

I hereby certify that this document and the data contained herein was prepared by me or under my direct supervision.

John Madson
SIGNATURE

5/14/96
DATE

Registration No. 13593

Land Surveyor, Professional Engineer
 County Surveyor, County Engineer

OFFICE OF THE COUNTY RECORDER
 County of MARTIN

I hereby certify that this document was filed in the Co. Recorders Office at _____ .M. on the _____ day of _____ A.D., 19____.

County Recorder _____
 By _____, Deputy
 DOCUMENT NO. _____

**S.E. Cor., Sec. 17, T. 101 N., R. 32 W.
(Lake Belt Twp)**

Statement of Evidence

The corner was originally established during the Public Land Survey of 1857, by John O. Brunius.

The Martin County Highway Dept. Tie Records indicate the corner was a a stone "+" (30" deep), with a 2 x2 hub over stone, with a 3/4" iron pipe over hub (surface) Tie - 59.85 E = Dead End Sign Post.

On July 28, 1993, I found a 3/4" iron rod (bent), replaced with a 3/4" iron pipe.

The History shown was obtained from the Martin County Highway Dept. Tie Records and existing Certificates of Location, only. Further History information may be obtained from the Martin County Recorder.