

# CERTIFICATE OF LOCATION OF GOVERNMENT CORNER

LAKE BELT  
SOUTHEAST

Corner of Section 15, Township 101N, Range 32W, 5th P.M.

STATE OF MINNESOTA, County of MARTIN

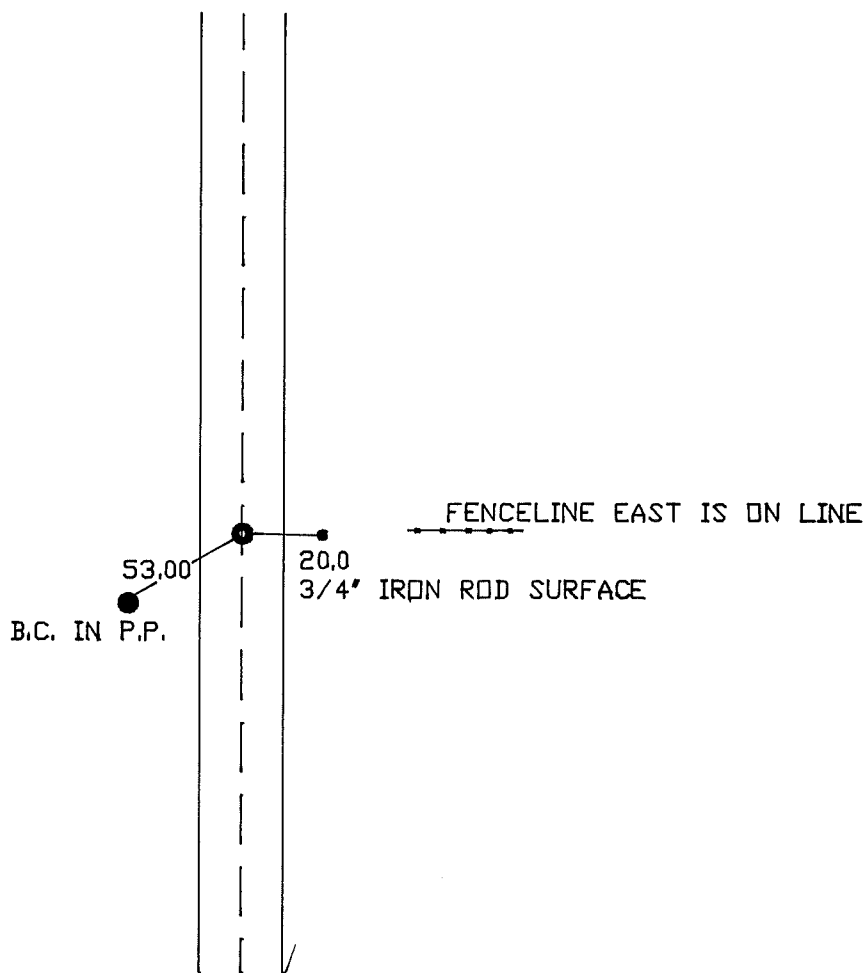
At the corner location shown on the sketch:

On 6-10-1994 found a 1 1/4" x 24" IRON ROD 3" DEEP.  
DATE

left monument as found,  lowered monument,  removed monument (explain)

On 6-10-1994 Placed a 5/8" x 30" IRON ROD WITH ALUM. CAP 4" DEEP.  
DATE

## SKETCH OF REFERENCE TIES



Statement of evidence relative to this corner location is on back of page.

I hereby certify that this document and the data contained herein was prepared by me or under my direct supervision.

\_\_\_\_\_  
SIGNATURE DATE

Registration No. \_\_\_\_\_

- Land Surveyor,  Professional Engineer  
 County Surveyor,  County Engineer

OFFICE OF THE REGISTER OF DEEDS  
County of \_\_\_\_\_

I hereby certify that this document was filed in the Reg. of Deeds office at \_\_\_\_\_ M. on the

\_\_\_\_\_ day of \_\_\_\_\_ A.D., 19\_\_\_\_\_

Register of Deeds \_\_\_\_\_

By \_\_\_\_\_, Deputy

DOCUMENT NO. \_\_\_\_\_