

CERTIFICATE OF LOCATION OF GOVERNMENT CORNER

LAKE BELT TWP.

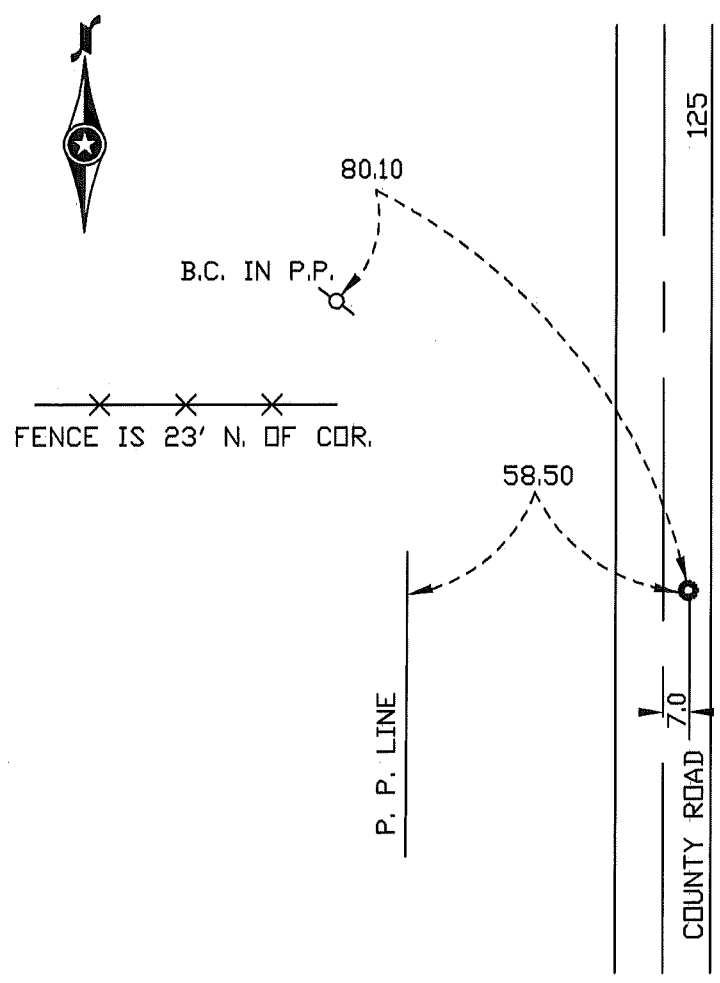
EAST QUARTER Corner of Section 14, Township 101N., Range 32W., 5th P.M.

STATE OF MINNESOTA, County of MARTIN

At the corner location shown on the sketch:

- On 6-17-94 found a 3/4" x 24" IRON ROD 6' DEEP
DATE
- left monument as found, lowered monument, removed monument (explain)
- On 6-17-94 Placed a 5/8" x 30" I.R. WITH ALUM. CAP 4" DEEP
DATE

SKETCH OF REFERENCE TIES



Statement of evidence relative to this corner location is on back of page.

I hereby certify that this document and the data contained herein was prepared by me or under my direct supervision.

SIGNATURE DATE

Registration No. _____

- Land Surveyor, Professional Engineer
- County Surveyor, County Engineer

OFFICE OF THE REGISTER OF DEEDS
County of _____

I hereby certify that this document was filed in the Reg. of Deeds office at _____, M. on the

_____ day of _____ A.D., 19____
Register of Deeds _____

By _____, Deputy

DOCUMENT NO. _____