

CERTIFICATE OF LOCATION OF GOVERNMENT CORNER

South Quarter _____ Corner of Section 13, Township 101N, Range 32W, 5th P.M.

STATE OF MINNESOTA, County of Martin

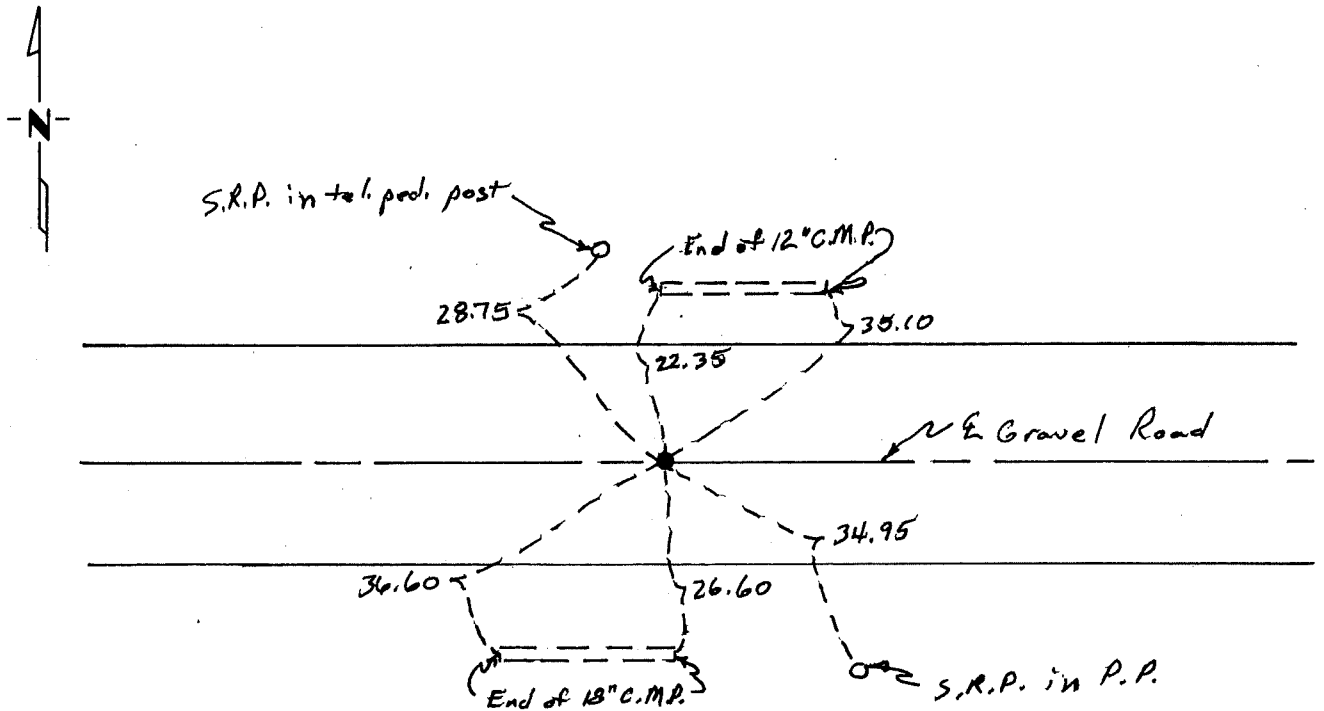
At the corner location shown on the sketch:

On 10/12/82 found a 6" x 6" stone with "+" (4" deep)
DATE

left monument as found, lowered monument, removed monument (explain)

On 10/12/82 placed an iron pipe along north side of stone (6" deep)
DATE

SKETCH OF REFERENCE TIES



Statement of evidence relative to this corner location is on back of page.

I hereby certify that this document and the data contained herein was prepared by me or under my direct supervision.

John Maden 11-19-82
SIGNATURE DATE

Registration No. 13593

- Land Surveyor, Professional Engineer
- County Surveyor, County Engineer

OFFICE OF THE COUNTY RECORDER
County of Martin

I hereby certify that this document was filed in the Co. Recorders office at _____ .M. on the _____ day of _____ A.D., 19 _____

COUNTY RECORDER _____

By _____, Deputy

DOCUMENT NO. _____

Statement of Evidence:

The corner was originally established during the public land survey which was completed in Lake Belt Township in 1857.

In January of 1898, George Sawyer, Deputy County Surveyor, as recorded in County Surveyor's Book C, page 123 $\frac{1}{2}$, identified the corner by black walnut stake in center of travelled road (2" deep).

In May of 1900, George Sawyer, Deputy County Surveyor, as recorded in County Surveyor's Book D, page 9, identified corner by black walnut stake and set 12" x 10" x 6" grey granite with "+" and $\frac{1}{4}$ " (surface) over crockery (26" deep).

In September of 1929, George Sawyer, County Surveyor, as recorded in County Surveyor's Book F, page 124, identified corner and set flint rock 11" x 6" x 5" with "+" (2" deep) in 1 $\frac{1}{2}$ foot grade.

In 1959, the Martin County Highway Department identified corner as stone "+" (4" down) with remaining ties being:
28.80 N. SRP in telephone pole
34.90 S.E. SRP in power pole (M.H.D.)

On 10/12/82, I found a 6" x 6" stone with "+" (4" deep) and set an iron pipe along the North side of stone (6" deep).