

CERTIFICATE OF LOCATION OF GOVERNMENT CORNER

Lake Belt

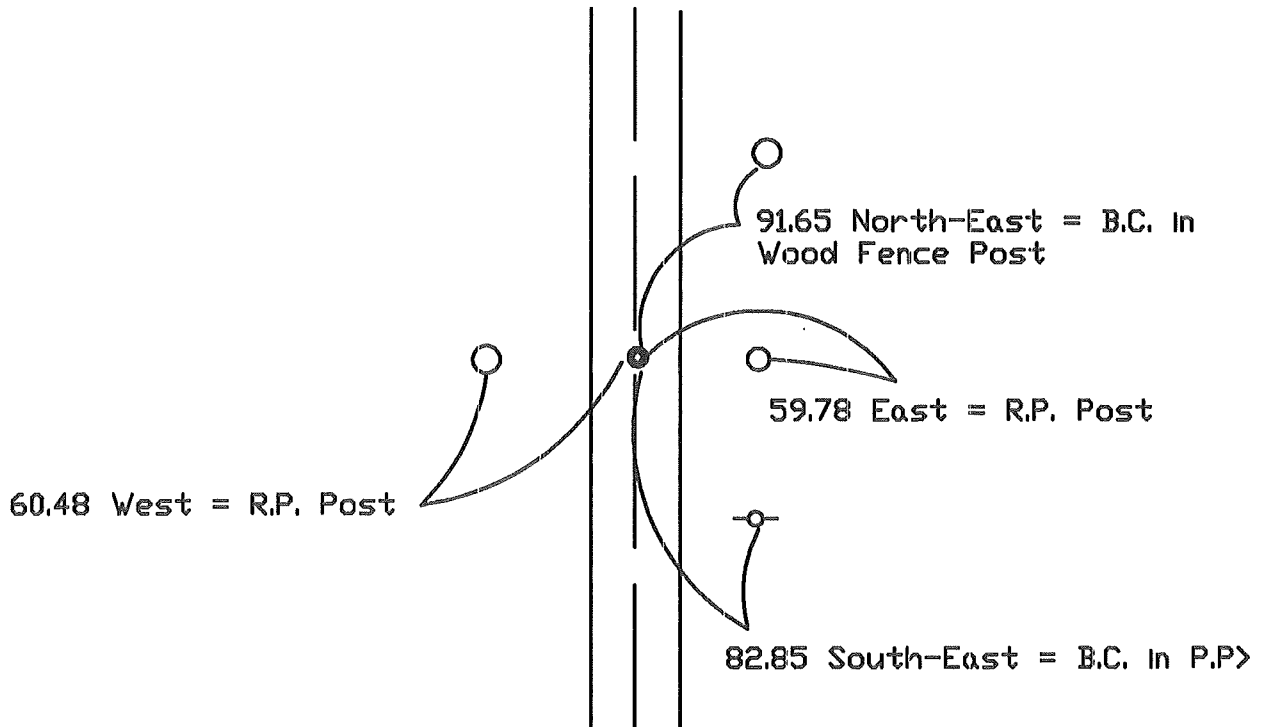
East 1/4 Corner of Section 13, Township T101N, Range R32W, 5th P.M.

STATE OF MINNESOTA, County of MARTIN

At the corner location shown on the sketch:

- On 7-13-99 found a 3/4" I.R. leaned over (6" Deep) in Bit. Paving
DATE
- left monument as found, lowered monument, removed monument (explain)
- On 7-13-99 Placed a 5/8" X 24" I.R. w/Alum. Cap in agreement
DATE with previous tie information

SKETCH OF REFERENCE TIES



Statement of evidence relative to this corner location is on back of page.

I hereby certify that this document and the data contained herein was prepared by me or under my direct supervision.

SIGNATURE DATE

Registration No. _____

- Land Surveyor, Professional Engineer
- County Surveyor, County Engineer

OFFICE OF THE REGISTER OF DEEDS

County of MARTIN

I hereby certify that this document was filed in the Reg. of Deeds office at

_____M. on the

_____day of _____A.D., 19____

Register of Deeds _____

By _____, Deputy

DOCUMENT NO. _____

Statement of Evidence:

The corner was originally established during the public land survey which was completed in Tenhassen Township in 1854.

A survey done in July, 1937, by County Surveyor, George Sawyer, recorded in Surveyor's Book G, page 156, re-established the corner on line between the Southwest and Northwest Section corners and fence line into Section 13. He placed a 14" x 12" x 8" reddish granite with "+" over crockery.

In 1949, the State Highway Department identified the corner as a stone with "+" and placed a 1" x 2" hub over "+". The remaining tie being:
82.9' S.E. to power pole.

On 5/6/82, I found a 3/4" iron rod in the bituminous paving.