

CERTIFICATE OF LOCATION OF GOVERNMENT CORNER

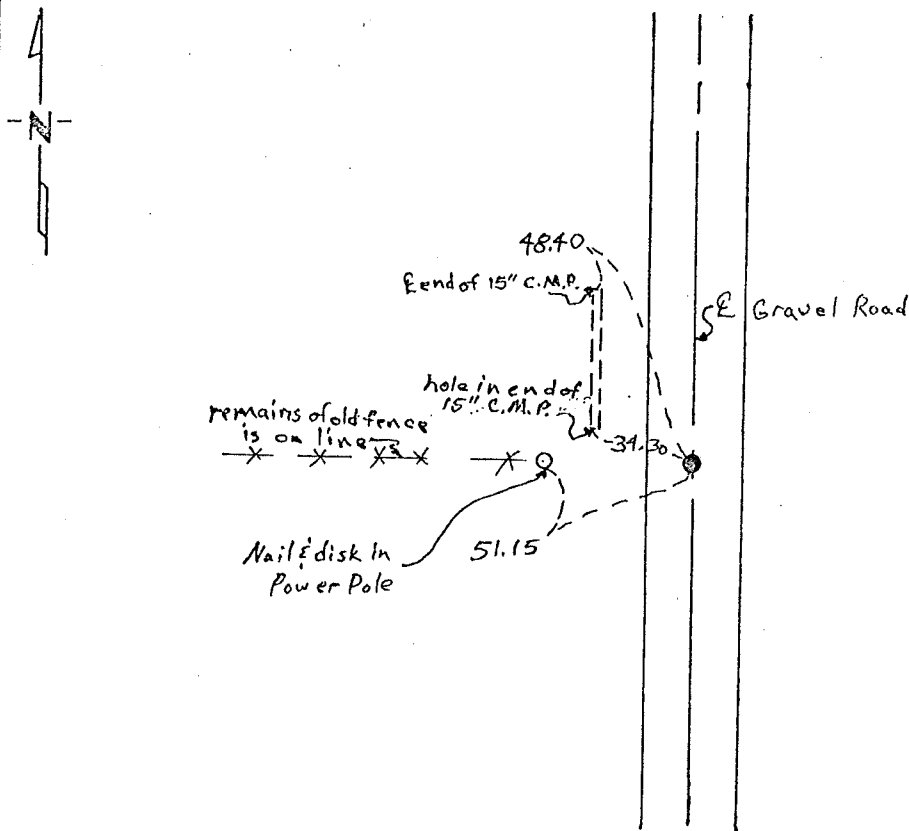
East Quarter _____ Corner of Section 11, Township 101N, Range 32W, 5th P.M.

STATE OF MINNESOTA, County of Martin

At the corner location shown on the sketch:

- On 4/2/82 found a 1" iron rod (3" deep)
DATE
- left monument as found, lowered monument, removed monument (explain)
- On _____ placed a _____
DATE

SKETCH OF REFERENCE TIES



Statement of evidence relative to this corner location is on back of page.

I hereby certify that this document and the data contained herein was prepared by me or under my direct supervision.

John Madson 4-7-82
SIGNATURE DATE

Registration No. 13593

- Land Surveyor, Professional Engineer
- County Surveyor, County Engineer

OFFICE OF THE REGISTER OF DEEDS
County of Martin

I hereby certify that this document was filed in the Reg. of Deeds office at 2:15 P. .M. on the 19th day of July, A.D., 19 82

Register of Deeds Devaldo J. Persson
By _____, Deputy

DOCUMENT NO. 267145

Statement of Evidence:

The corner was originally established during the public land survey which was completed in Lake Belt Township in 1857.

A survey of roads in Lake Belt Township made by C.T. Montgomery, dated May, 1893, in County Surveyor's Book B, page 248, indicates a stake at the corner.

A survey made by C.T. Montgomery, dated March, 1899, in County Surveyor's Book C, page 151, indicates he identified 3 rotten stakes and set a 10" x 5" x 4" boulder with "+" at corner.

A survey made by George E. Sawyer, dated May, 1935, survey Book G, survey No. 58, indicates corner was obliterated by road work. He re-established the corner with a 14" x 10" x 6" grey granite with "+" over crockery.

The Martin County Highway Department in 1972 found a stone "+" (13" deep) and set a 1" iron pipe. The remaining ties are as follows:

34.30W. = Hole in S. end entrance culvert W.

48.5 N.W. = Hole in N. end entrance culvert W.

fence line W. is on line

51.2W. = power pole

On 4/2/82, I found a 1" iron rod (3" deep) in agreement with previous ties.

John White