

CERTIFICATE OF LOCATION OF GOVERNMENT CORNER

LAKE BELT
SOUTHEAST

Corner of Section 1, Township 101N, Range 32W, 5th P.M.

STATE OF MINNESOTA, County of MARTIN

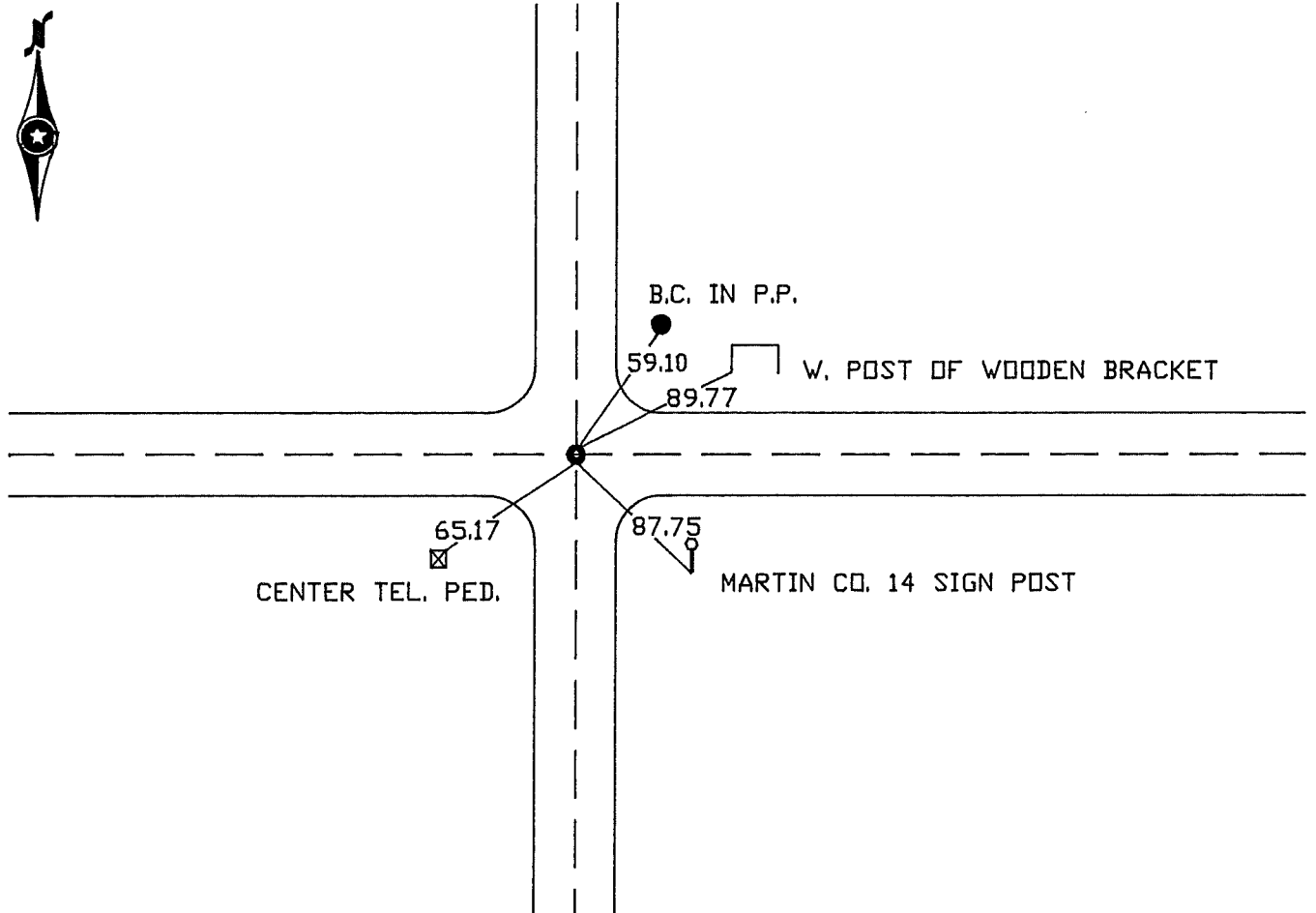
At the corner location shown on the sketch:

On 6-9-1994 found a 3/4" x 24" IRON ROD IN BIT. PAVEMENT 3" DEEP.
DATE

left monument as found, lowered monument, removed monument (explain)

On 6-9-1994 Placed a 5/8" x 24" IRON ROD WITH ALUM CAP.
DATE

SKETCH OF REFERENCE TIES



Statement of evidence relative to this corner location is on back of page.

I hereby certify that this document and the data contained herein was prepared by me or under my direct supervision.

SIGNATURE _____ DATE _____

Registration No. _____

- Land Surveyor, Professional Engineer
- County Surveyor, County Engineer

OFFICE OF THE REGISTER OF DEEDS
County of _____

I hereby certify that this document was filed in the Reg. of Deeds office at _____, M. on the

_____ day of _____, A.D., 19____

Register of Deeds _____

By _____, Deputy

DOCUMENT NO. _____